

Klippon® Connect terminal blocks WPD

Pioneering solutions for power feed-in with aluminium and copper conductors

Let's connect.



Extra efficiency in panel planning, installation and operation

Klippon® Connect offers added value at all stages

As your partner in Industrial Connectivity, we consider panel building to be an integrated process – from the planning stage all the way to installation and operation. The latest example of this is Klippon® Connect. Our offer – which consists of tailored application products, universal terminal blocks and process-supporting services – provides you with productivity benefits at all stages of the panel building process. These include benefits such as time-saving planning and project planning, faultless wiring, fast marking and much more besides.

Often, standardisation enables the right solution to be found with our sophisticated, function-oriented universal range. It provides you with practical product features. For recurring application fields, such as control voltage distribution or signal wiring, we offer you the ideal solutions with our application range. Thanks to the high level of application focus, these solutions really do help increase productivity, efficiency and safety.

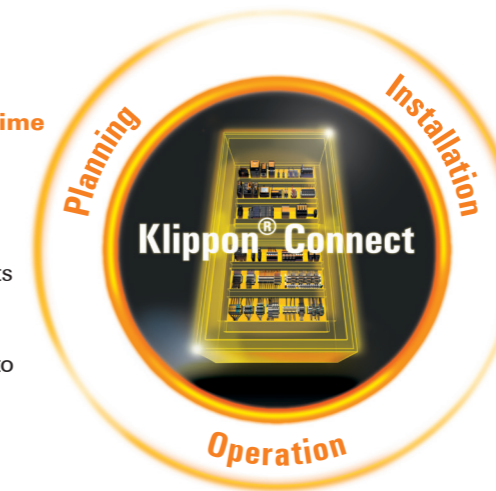


Achieving greater productivity one step at a time

Every panel building process starts with the planning stage. It is here that the foundation for an optimum set-up is laid. Once there is a plan in place, installation starts. The panel components are marked, wired and checked. The fully installed panel can then be put into operation. To ensure that you achieve the greatest possible level of efficiency in this process, we have continuously examined the optimisation potential of both the individual phases (planning, installation and operation) and how they interlink with one another. Innovative products and services that support you in all the stages of the panel building process are the result.

Up to 75 percent engineering time saved

- Faster planning with the Weidmüller Configurator
- Error-free configuration through compatibility checks on products and accessories
- High level of transparency throughout the process thanks to linked data models
- Convenient creation of product documentation



High wiring density with maximum ease of installation

- Noticeably faster wiring with PUSH IN technology
- All product functions can be clearly distinguished
- Flexible potential distribution thanks to varied cross-connection options
- Faster marking thanks to endless marker strip and large marking surfaces

Sustainably higher availability during operation

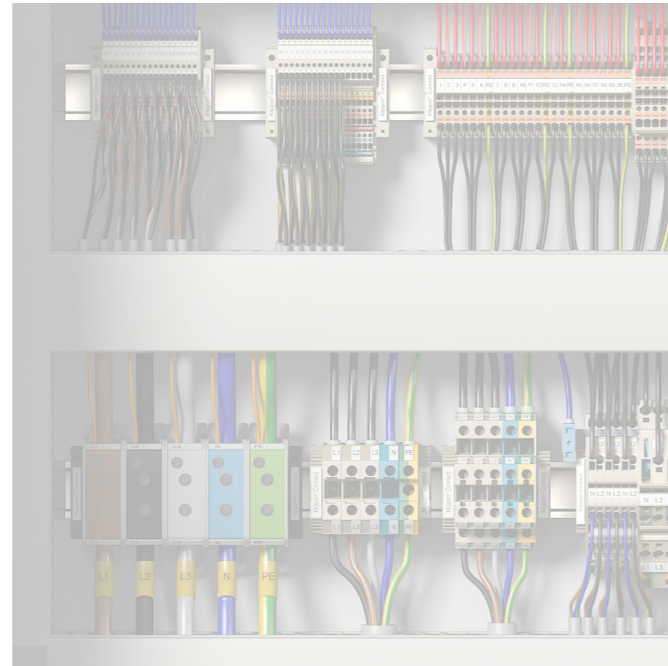
- Simpler testing procedure thanks to integrated test point
- Rewiring possible during operation without special tools thanks to PUSH IN technology with pusher
- Gas-tight connections for interference-free operation
- Flexible, simple modification and extension

Reliable and efficient power supply Really convenient with Klippon® Connect

A growing number of industrial applications needs to fit a large amount of technology into a very dense space. Different connection types must thereby be interchangeable, because cost-saving aluminium often replaces copper.

Klippon® Connect power feed-in terminal blocks WPD allow for an easy and safe installation of aluminium and copper conductors on a small footprint. A power supply or monitoring connection can also be used as an option.

Customers can use the power feed-in terminal blocks WPD, regardless of the conductor material. They can be mounted either directly or on DIN rail TS35.



With their slim design and approval for aluminium conductors, the new Klippon® Connect power feed-in terminal blocks WPD meet all of the requirements of complex applications.

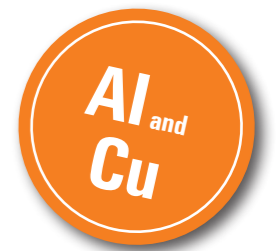
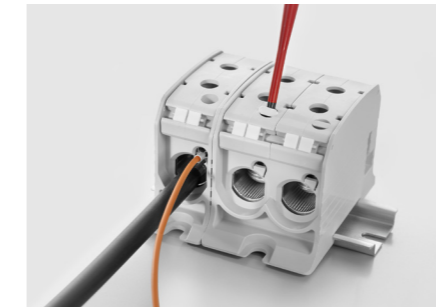
Easy and flexible mounting

The possibility of direct mounting and the compatibility with the 35-mm DIN rail in accordance with EN 60715 and EN 50022 allow fast processing and installation.



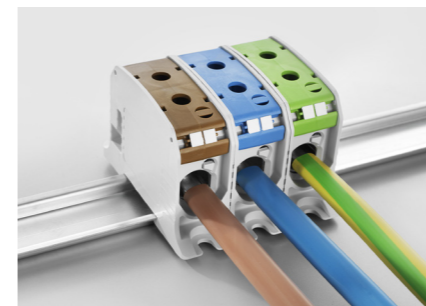
Uninterrupted monitoring

Small power supply and monitoring connections can be installed without disconnecting any previously connected terminal blocks.



Compact and robust design

Klippon® Connect power feed-in terminal blocks WPD boast a wide range of features, including a compact and robust design.



Your special advantages:

Pioneering solutions for power feed-in with aluminium and copper conductors

Whether confined spaces, large wire cross-sections or the use of aluminium conductors: the Klippon® Connect power feed-in terminal blocks WPD ensure reliable connections and a compact, clear panel design.

WPD 130



WPD 230



WPD 330



Width/Depth/Height	20 / 45 / 70
Rated AC voltage	1000 V AC
Rated DC voltage	1000 V DC
Rated current	120 A
UL 94 flammability rating	V-0
Poles	1

Width/Depth/Height	35.6 / 45 / 70
Rated AC voltage	1000 V AC
Rated DC voltage	1000 V DC
Rated current	120 A
UL 94 flammability rating	V-0
Poles	2

Width/Depth/Height	56.6 / 45 / 70
Rated AC voltage	1000 V AC
Rated DC voltage	1000 V DC
Rated current	120 A
UL 94 flammability rating	V-0
Poles	3

Technical data

Copper (Cu) IEC 60947-7-1/ UL 1059

	Input	Tightening Torque
Solid	6 - 50 mm ²	10 Nm
Solid (UL)	10 AWG - 1/0 AWG	123,9 Lb In.
Stranded	6 - 50 mm ²	10 Nm
Stranded (UL)	10 AWG - 1/0 AWG	123,9 Lb In.
Finely stranded with wire end ferrule	4 - 35 mm ²	10 Nm
Finely stranded with wire end ferrule (UL)	12 AWG - 0 AWG	123,9 Lb In.
Clamping screw	M10	
Stripping length	16 mm	
Max. current	150 A / 150 A (UL)	

Output Tightening Torque

	Output	Tightening Torque
	6 - 50 mm ²	10 Nm
	10 AWG - 1/0 AWG	123,9 Lb In.
	6 - 50 mm ²	10 Nm
	10 AWG - 1/0 AWG	123,9 Lb In.
	4 - 35 mm ²	10 Nm
	12 AWG - 0 AWG	123,9 Lb In.
	M10	
	16 mm	
	150 A / 150 A (UL)	

Input Tightening Torque

	Input	Tightening Torque
	6 - 50 mm ²	10 Nm
	10 AWG - 1/0 AWG	123,9 Lb In.
	6 - 50 mm ²	10 Nm
	10 AWG - 1/0 AWG	123,9 Lb In.
	4 - 35 mm ²	10 Nm
	12 AWG - 0 AWG	123,9 Lb In.
	M10	
	16 mm	
	150 A / 150 A (UL)	

Output Tightening Torque

	Output	Tightening Torque
	6 - 50 mm ²	10 Nm
	10 AWG - 1/0 AWG	123,9 Lb In.
	6 - 50 mm ²	10 Nm
	10 AWG - 1/0 AWG	123,9 Lb In.
	4 - 35 mm ²	10 Nm
	12 AWG - 0 AWG	123,9 Lb In.
	M10	
	16 mm	
	150 A / 150 A (UL)	

Auxiliary connection

- Solid
- Solid (UL)
- Stranded
- Stranded (UL)
- Finely stranded with wire end ferrule
- Finely stranded with wire end ferrule (UL)
- Clamping screw
- Stripping length
- Max. current

Aluminium (Al) UL 1059

	Input	Tightening Torque
Solid	16 - 50 mm ²	14 Nm
Solid (UL)	1 AWG - 1/0 AWG	123,9 Lb In.
Stranded	16 - 50 mm ²	14 Nm
Stranded (UL)	1 AWG - 1/0 AWG	123,9 Lb In.
Sector	4 - 35 mm ²	14 Nm
Sector (UL)	1 AWG - 0 AWG	123,9 Lb In.
Clamping screw	M10	
Stripping length	16 mm	
Max. current	150 A / 120 A (UL)	

Output Tightening Torque

	Output	Tightening Torque
	16 - 50 mm ²	14 Nm
	1 AWG - 1/0 AWG	123,9 Lb In.
	16 - 50 mm ²	14 Nm
	1 AWG - 1/0 AWG	123,9 Lb In.
	16 - 50 mm ²	14 Nm
	10 AWG - 1/0 AWG	123,9 Lb In.
	M10	
	16 mm	
	150 A / 120 A (UL)	

Input Tightening Torque

	Input	Tightening Torque
	16 - 50 mm ²	14 Nm
	1 AWG - 1/0 AWG	123,9 Lb In.
	16 - 50 mm ²	14 Nm
	1 AWG - 1/0 AWG	123,9 Lb In.
	4 - 35 mm ²	14 Nm
	1 AWG - 0 AWG	123,9 Lb In.
	M10	
	16 mm	
	150 A / 120 A (UL)	

Output Tightening Torque

	Output	Tightening Torque
	16 - 50 mm ²	14 Nm
	1 AWG - 1/0 AWG	123,9 Lb In.
	16 - 50 mm ²	14 Nm
	1 AWG - 1/0 AWG	123,9 Lb In.
	16 - 50 mm ²	14 Nm
	10 AWG - 1/0 AWG	123,9 Lb In.
	M10	
	16 mm	
	150 A / 120 A (UL)	

Ordering data

Version	Type	Qty.	Order No.
grey	WPD 130 1X50/1X50 GY	9	2502530000
blue	WPD 130 1X50/1X50 BL	9	2502540000
brown	WPD 130 1X50/1X50 BN	9	2502560000
green	WPD 130 1X50/1X50 GN	9	2502550000
black	WPD 130 1X50/1X50 BK	9	2502570000

Type	Qty.	Order No.
WPD 230 2X50/2X50 GY	5	2502580000
WPD 230 2X50/2X50 BL	5	2502590000
WPD 230 2X50/2X50 BN	5	2502610000
WPD 230 2X50/2X50 GN	5	2502600000
WPD 230 2X50/2X50 BK	5	2502950000

Type	Qty.	Order No.
WPD 330 3X50/3X50 3XGY	3	2502620000
WPD 330 3X50/3X50 1XBN/1XBK/1XGY	2	2502650000
WPD 330 1XGY/1XBL/1XGN	3	2502640000

You can find the complete assortment in our online product catalogue www.weidmueller.com

WPD 131



WPD 231



Width/Depth/Height
Rated AC voltage
Rated DC voltage
Rated current
UL 94 flammability rating
Poles

25.5 / 57 / 93
1000 V AC
1000 V DC
155 A
V-0
1



47 / 57 / 93
1000 V AC
1000 V DC
155 A
V-0
2



Technical data

Copper (Cu) IEC 60947-7-1/ UL 1059	Input	Tightening Torque
Solid	10 - 95 mm ²	19 Nm
Solid (UL)	6 AWG - 3/0 AWG	200 Lb In.
Stranded	10 - 95 mm ²	19 Nm
Stranded (UL)	6 AWG - 3/0 AWG	200 Lb In.
Finely stranded with wire end ferrule	6 - 70 mm ²	19 Nm
Finely stranded with wire end ferrule (UL)	8 AWG - 2/0 AWG	200 Lb In.
Clamping screw	M14	
Stripping length	26 mm	
Max. current	232 A / 200 A (UL)	

Output	Tightening Torque
10 - 95 mm ²	19 Nm
6 AWG - 3/0 AWG	200 Lb In.
10 - 95 mm ²	19 Nm
6 AWG - 3/0 AWG	200 Lb In.
6 - 70 mm ²	19 Nm
8 AWG - 2/0 AWG	200 Lb In.
M14	
26 mm	
232 A / 200 A (UL)	

Auxiliary connection	Tightening Torque
Solid	1,5 - 10 mm ²
Solid (UL)	16 - 8 AWG
Stranded	1,5 - 10 mm ²
Stranded (UL)	16 - 8 AWG
Finely stranded with wire end ferrule	1,5 - 6 mm ²
Finely stranded with wire end ferrule (UL)	16 - 10 AWG
Clamping screw	M4
Stripping length	10 mm
Max. current	57A

Input	Tightening Torque
10 - 95 mm ²	19 Nm
6 AWG - 3/0 AWG	200 Lb In.
10 - 95 mm ²	19 Nm
6 AWG - 3/0 AWG	200 Lb In.
10 - 95 mm ²	19 Nm
6 AWG - 3/0 AWG	200 Lb In.
M14	
26 mm	
200 A / 155 A (UL)	

Aluminium (Al) UL 1059	Input	Tightening Torque
Solid	10 - 95 mm ²	19 Nm
Solid (UL)	6 AWG - 3/0 AWG	200 Lb In.
Stranded	10 - 95 mm ²	19 Nm
Stranded (UL)	6 AWG - 3/0 AWG	200 Lb In.
Sector	10 - 95 mm ²	19 Nm
Sector (UL)	6 AWG - 3/0 AWG	200 Lb In.
Clamping screw	M14	
Stripping length	26 mm	
Max. current	200 A / 155 A (UL)	

Output	Tightening Torque
10 - 95 mm ²	19 Nm
6 AWG - 3/0 AWG	200 Lb In.
10 - 95 mm ²	19 Nm
6 AWG - 3/0 AWG	200 Lb In.
10 - 95 mm ²	19 Nm
6 AWG - 3/0 AWG	200 Lb In.
M14	
26 mm	
200 A / 155 A (UL)	

Ordering data

Version	Type	Qty.	Order No.
grey	WPD 131 1X95/1X95 GY	2	2503090000
blue	WPD 131 1X95/1X95 BL	2	2502660000
brown	WPD 131 1X95/1X95 BN	2	2502680000
green	WPD 131 1X95/1X95 GN	2	2502670000
black	WPD 131 1X95/1X95 BK	1	2502690000

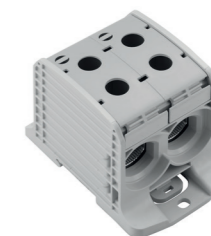
Type	Qty.	Order No.
WPD 231 2X95/2X95 GY	1	2502700000
WPD 231 2X95/2X95 BL	1	2502710000
WPD 231 2X95/2X95 BN	1	2502730000
WPD 231 2X95/2X95 GN	1	2502720000
WPD 231 2X95/2X95 BK	1	2502740000

You can find the complete assortment in our online product catalogue
www.weidmueller.com

WPD 132



WPD 232



Width/Depth/Height
Rated AC voltage
Rated DC voltage
Rated current
UL 94 flammability rating
Poles

37.5 / 73.5 / 105
1000 V AC
1000 V DC
250 A
V-0
1



Technical data

Copper (Cu) IEC 60947-7-1/ UL 1059	Input	Tightening Torque
Solid core	95 - 185 mm ²	25 Nm
Solid core (UL)	3/0 AWG - 350 kcmil	250 Lb In.
Stranded	95 - 185 mm ²	25 Nm
Stranded (UL)	3/0 AWG - 350 kcmil	250 Lb In.
Finely stranded with wire end ferrule	70 - 150 mm ²	25 Nm
Finely stranded with wire end ferrule (UL)	2/0 AWG - 300 kcmil	250 Lb In.
Clamping screw	M14	
Stripping lengths	26 mm	
Max. current	353 A / 310 A (UL)	

Output	Tightening Torque
95 - 185 mm ²	25 Nm
3/0 AWG - 350 kcmil	250 Lb In.
95 - 185 mm ²	25 Nm
3/0 AWG - 350 kcmil	250 Lb In.
70 - 150 mm ²	25 Nm
2/0 AWG - 300 kcmil	250 Lb In.
M14	
26 mm	
353 A / 310 A (UL)	

Auxiliary connection	Tightening Torque
Solid core	1,5 - 10 mm ²
Solid core (UL)	16 - 8 AWG
Stranded	1,5 - 10 mm ²
Stranded (UL)	16 - 8 AWG
Finely stranded with wire end ferrule	1,5 - 6 mm ²
Finely stranded with wire end ferrule (UL)	16 - 10 AWG
Clamping screw	M4
Stripping lengths	10 mm
Max. current	57 A

Input	Tightening Torque
95 - 185 mm ²	28,8 Nm
3/0 AWG - 350 kcmil	398 Lb In.
95 - 185 mm ²	28,8 Nm
3/0 AWG - 350 kcmil	398 Lb In.
95 - 185 mm ²	28,8 Nm
3/0 AWG - 350 kcmil	398 Lb In.
M18	
29 mm	
250 A / 250 A (UL)	

Aluminium (Al) UL 1059	Input	Tightening Torque
Solid	10 - 95 mm ²	19 Nm
Solid (UL)	6 AWG - 3/0 AWG	200 Lb In.
Stranded	10 - 95 mm ²	19 Nm
Stranded (UL)	6 AWG - 3/0 AWG	200 Lb In.
Sector	10 - 95 mm ²	19 Nm
Sector (UL)	6 AWG - 3/0 AWG	200 Lb In.
Clamping screw	M14	
Stripping length	26 mm	
Max. current	200 A / 155 A (UL)	

Output	Tightening Torque
10 - 95 mm ²	19 Nm
6 AWG - 3/0 AWG	200 Lb In.
10 - 95 mm ²	19 Nm
6 AWG - 3/0 AWG	200 Lb In.
10 - 95 mm ²	19 Nm
6 AWG - 3/0 AWG	200 Lb In.
M14	
26 mm	
200 A / 155 A (UL)	

Ordering data

Version	Type	Qty.	Order No.
grey	WPD 132 1X185/1X185 GY	1	2502750000
blue	WPD 132 1X185/1X185 BL	1	2502760000
brown	WPD 132 1X185/1X185 BN	1	2502780000
green	WPD 132 1X185/1X185 GN	1	2502770000
black	WPD 132 1X185/1X185 BK	1	2502790000

Type	Qty.	Order No.
WPD 232 2X185/2X185 GY	1	2502800000
WPD 232 2X185/2X185 BL	1	2502810000
WPD 232 2X185/2X185 BN	1	2502830000
WPD 232 2X185/2X185 GN	1	2502820000
WPD 232 2X185/2X185 BK	1	2502840000

You can find the complete assortment in our online product catalogue
www.weidmueller.com

WPD 133



WPD 233



Width/Depth/Height	45 / 83.5 / 118
Rated AC voltage	1000 V AC
Rated DC voltage	1000 V DC
Rated current	340 A
UL 94 flammability rating	V-0
Poles	1

Width/Depth/Height	82.6 / 83.5 / 118
Rated AC voltage	1000 V AC
Rated DC voltage	1000 V DC
Rated current	340 A
UL 94 flammability rating	V-0
Poles	2

Technical data

Copper (Cu) IEC 60947-7-1/ UL 1059

	Input	Tightening Torque
Solid	50 - 300 mm ²	45 Nm
Solid (UL)	300 kcmil - 600 kcmil	300 Lb In.
Stranded	50 - 300 mm ²	45 Nm
Stranded (UL)	300 kcmil - 600 kcmil	300 Lb In.
Finely stranded with wire end ferrule	35 - 240 mm ²	45 Nm
Finely stranded with wire end ferrule (UL)	250 kcmil - 600 kcmil	300 Lb In.
Clamping screw	M24	
Stripping length	34 mm	
Max. current	520 A / 420 A (UL)	

Output

	Output	Tightening Torque
Solid	50 - 300 mm ²	45 Nm
Solid (UL)	300 kcmil - 600 kcmil	300 Lb In.
Stranded	50 - 300 mm ²	45 Nm
Stranded (UL)	300 kcmil - 600 kcmil	300 Lb In.
Finely stranded with wire end ferrule	35 - 240 mm ²	45 Nm
Finely stranded with wire end ferrule (UL)	250 kcmil - 600 kcmil	300 Lb In.
Clamping screw	M24	
Stripping length	34 mm	
Max. current	520 A / 420 A (UL)	

Auxiliary connection

		Tightening Torque
Solid	1,5 - 10 mm ²	1,2 Nm
Solid (UL)	16 - 8 AWG	2,3 Lb In.
Stranded	1,5 - 10 mm ²	1,2 Nm
Stranded (UL)	16 - 8 AWG	2,3 Lb In.
Finely stranded with wire end ferrule	1,5 - 6 mm ²	1,2 Nm
Finely stranded with wire end ferrule (UL)	16 - 10 AWG	2,3 Lb In.
Clamping screw	M4	
Stripping length	10 mm	
Max. current	57A	

Aluminium (Al) UL 1059

	Input	Tightening Torque
Solid	50 - 300 mm ²	65 Nm
Solid (UL)	300 kcmil - 600 kcmil	575.3 Lb In.
Stranded	50 - 300 mm ²	65 Nm
Stranded (UL)	300 kcmil - 600 kcmil	575.3 Lb In.
Sector	50 - 300 mm ²	65 Nm
Sector (UL)	300 kcmil - 600 kcmil	575.3 Lb In.
Clamping screw	M24	
Stripping length	34 mm	
Max. current	340 A / 340 A (UL)	

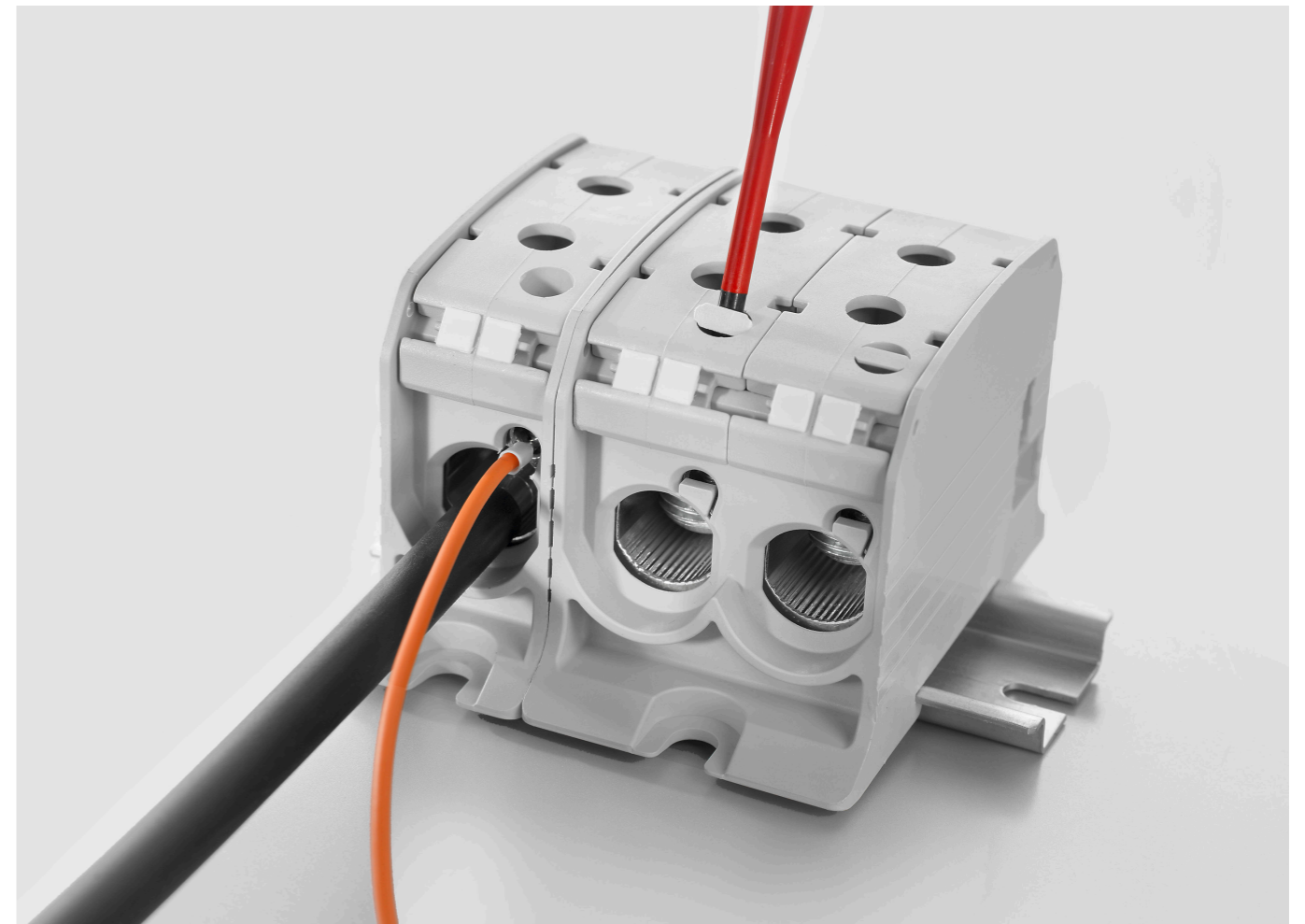
Output

	Output	Tightening Torque
Solid	50 - 300 mm ²	65 Nm
Solid (UL)	300 kcmil - 600 kcmil	575.3 Lb In.
Stranded	50 - 300 mm ²	65 Nm
Stranded (UL)	300 kcmil - 600 kcmil	575.3 Lb In.
Sector	50 - 300 mm ²	65 Nm
Sector (UL)	300 kcmil - 600 kcmil	575.3 Lb In.
Clamping screw	M24	
Stripping length	34 mm	
Max. current	340 A / 340 A (UL)	

Ordering data

Version	Type	Qty.	Order No.	Type	Qty.	Order No.
grey	WPD 133 1X300/1X300 GY	1	2502850000	WPD 233 2X300/2X300 GY	1	2502900000
blue	WPD 133 1X300/1X300 BL	1	2502860000	WPD 233 2X300/2X300 BL	1	2502910000
brown	WPD 133 1X300/1X300 BN	1	2502880000	WPD 233 2X300/2X300 BN	1	2502930000
green	WPD 133 1X300/1X300 GN	1	2502870000	WPD 233 2X300/2X300 GN	1	2502920000
black	WPD 133 1X300/1X300 BK	1	2502890000	WPD 233 2X300/2X300 BK	1	2502940000

You can find the complete assortment in our online product catalogue www.weidmueller.com



Weidmüller – Your partner in Industrial Connectivity

As experienced experts we support our customers and partners around the world with products, solutions and services in the industrial environment of power, signal and data. We are at home in their industries and markets and know the technological challenges of tomorrow. We are therefore continuously developing innovative, sustainable and useful solutions for their individual needs. Together we set standards in Industrial Connectivity.

Weidmüller Sweden
Box 31025
200 49 Malmö
Phone: +46 771 - 43 00 44
Fax: +46 40 - 37 48 60

Weidmüller Denmark
Vallensbækvej 18A
2605 Brøndby
Phone: +45 27 74 78 00
Fax: +45 40 37 48 60

Weidmüller Finland
Äyritie 8C
01510 Vantaa
Phone: +358 20 735 13 00

www.weidmuller.se

www.weidmuller.dk

www.weidmuller.fi