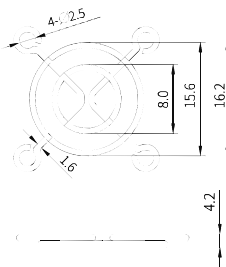


金属网罩主要是防止较大异物进入风扇内部，导致意外事故发生，其主要为经过多重表面处理的铁线或者是经过电解处理的不锈钢制作而成，有黑色及银白色等常规颜色可选择。金属铁线网罩，表面经过镀铜、镀镍、镀铬处理后，可以满足盐雾 8h 不腐蚀的要求；不锈钢经过电解处理后，可以耐受 72 小时以上的盐雾要求。焊点处可以承受 88 磅拉力试验，防护等级为 IP20，有多种规格可以选择。

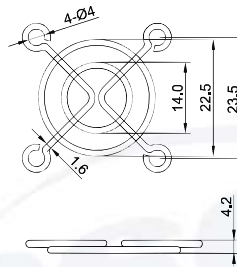
The metal mesh cover is mainly used to prevent large foreign objects from entering the fan, leading to accidents. It is mainly made of iron wire with multiple surface treatments or stainless steel with electrolytic treatment, and has conventional colors such as black and silvery white. Metal wire mesh cover, after copper plating, nickel plating and chromium plating, can meet the requirements of salt spray for 8 hours without corrosion; After electrolytic treatment, stainless steel can withstand salt spray for more than 72 hours. The solder joint can withstand 88 pounds tensile test, and the protection grade is IP20. There are many specifications to choose from.

常规型号 Conventional model:

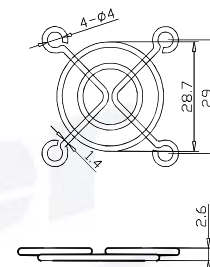
TX20 TX30 TX35 TX40 TX50 TX60 TX70 TX80 TX92 TX110 TX120
 TX135 TX150 TX5E TX180 TX200 TX205 TX220 TX225 TX254 TX280



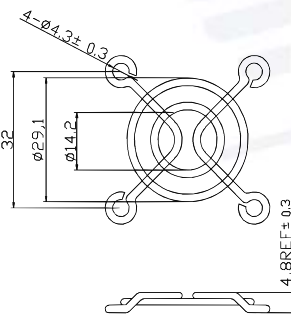
TX20



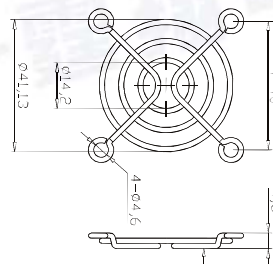
TX30



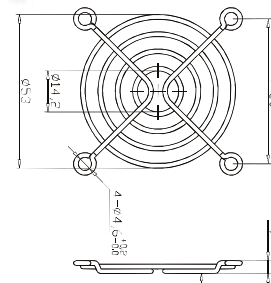
TX35



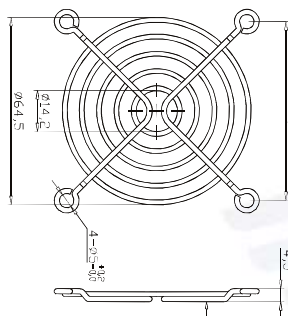
TX40



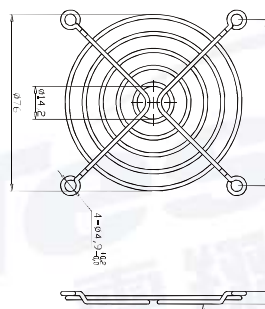
TX50



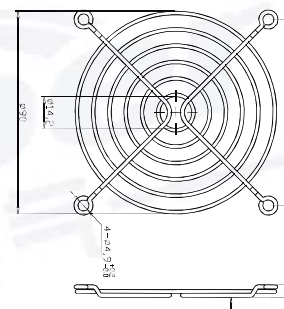
TX60



TX70



TX80



TX92