

SCHT 5 S**Weidmüller Interface GmbH & Co. KG**Klingenbergstraße 26
D-32758 Detmold
Germany

www.weidmueller.com



The SchT 5 S group tag carriers are clipped directly onto the TS 32 mounting rail (G-rail) or the TS 35 mounting rail (top-hat rail). It is therefore possible to label the terminal strip irrespective of the terminal and the type of terminal. SchT 5 and SchT 5 S are fitted with ESO 5, STR 5 protective strips.

The SchT 7 is a hinged group tag carrier for inlay tags which enables easy access to the clamping screw.

The SchT 7 is fitted with ESO 7, STR 7 protective strips or DEK 5.

Inlay tags and protective strips can be found under "Accessories".

General ordering data

Version	SCHT, Terminal marker, 44.5 x 9.5 mm, Pitch in mm (P): 5.00 Weidmueller, beige
Order No.	1631930000
Type	SCHT 5 S
GTIN (EAN)	4008190206680
Qty.	20 ST

SCHT 5 S

Weidmüller Interface GmbH & Co. KG
 Klingenbergstraße 26
 D-32758 Detmold
 Germany

www.weidmueller.com

Technical data

Approvals

ROHS	Conform
------	---------

Dimensions and weights

Height	44.5 mm	Height (inches)	1.752 inch
Width	9.5 mm	Width (inches)	0.374 inch
Net weight	3.64 g		

Temperatures

Operating temperature range	-40...100 °C
-----------------------------	--------------

Environmental Product Compliance

RoHS Compliance Status	Compliant without exemption
REACH SVHC	No SVHC above 0.1 wt%

General data

Orientation of print	horizontal and vertical	
Type of printing	neutral	
Width	9.5 mm	
UL 94 flammability rating	V-2	
Operating temperature range, max.	100 °C	
Operating temperature range, min.	-40 °C	
Colour	beige	
Halogen	No	
Material	Polyamide 66	
Printed characters	without	
Number of markers per packaging unit	Form of supply	Component part
Number of markers per combination	1 Component part = Terminal marker	
Operating temperature range	-40...100 °C	
Application/manufacturer	Weidmueller	

Connector markers

Pitch in mm (P)	5.00 mm
-----------------	---------

Classifications

ETIM 6.0	EC002848	ETIM 7.0	EC002848
ETIM 8.0	EC002848	ETIM 9.0	EC002848
ETIM 10.0	EC002848	ECLASS 9.0	27-14-11-92
ECLASS 9.1	27-14-11-92	ECLASS 10.0	27-14-11-92
ECLASS 11.0	27-14-11-92	ECLASS 12.0	27-14-11-92
ECLASS 13.0	27-14-11-92	ECLASS 14.0	27-14-11-92
ECLASS 15.0	27-14-11-92		

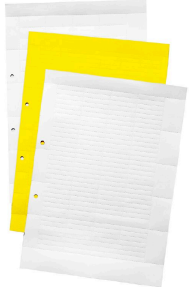
SCHT 5 S

Weidmüller Interface GmbH & Co. KG
 Klingenbergstraße 26
 D-32758 Detmold
 Germany

www.weidmueller.com

Accessories

ESO insert tags



General ordering data

Type	ESO 5 S DIN A4 WS	Version	
Order No.	1631920000	Terminal markers, Insert markers, 40 x 7 mm, white	
GTIN (EAN)	4008190206673		
Qty.	10 ST		

STR transparent strips



General ordering data

Type	STR 5 S F.SCHT 5 S	Version	
Order No.	1631940000	Terminal markers, Protective cap, 40 x 7 mm, Transparent	
GTIN (EAN)	4008190206697		
Qty.	20 ST		

Blank



ELS MultiCard markers can be printed with a PrintJet, plotter or SMark printer. In particular, colour printing with PrintJet AVANCED allows the eye-catching identification marking of cables and terminal strips in many ways.

ELS 6/30 for use in the WKM 8/30 cable markers or in the EM8/30 group-tag carriers

ELS 7/40 for use in the SchT5S group-tag carriers

ELS 16/40 for use in the WKM 18/43 cable markers or the SchT5 group-tag carriers

For custom printing: Please send us a file of our labeling software M-Print PRO or M-Print PRO Online (without installation) for your labeling specifications.

SCHT 5 S

Weidmüller Interface GmbH & Co. KG
 Klingenbergstraße 26
 D-32758 Detmold
 Germany

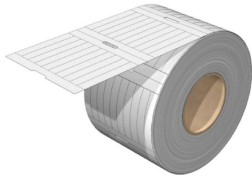
www.weidmueller.com

Accessories

General ordering data

Type	ELS 7/40 MC NE WS	Version
Order No.	1045640000	ELS, Insert markers, 0 - 0 mm, 40 x 7 mm, white
GTIN (EAN)	4032248836086	
Qty.	40 ST	
Type	ELS 7/40 MC NE GE	Version
Order No.	1045650000	ELS, Insert markers, 0 - 0 mm, 40 x 7 mm, yellow
GTIN (EAN)	4032248779635	
Qty.	40 ST	

ELS 7/40



ELS

ELS tags are special and non-adhesive insertable labels for WKM cable markers or for group tag carriers. The matt, thin but tear-resistant polyester provides very good labelling and excellent readability. Used in combination with water-repellent WKM sleeves, the solution guarantees particularly long-lasting identification of cables even in harsh environments.

General ordering data

Type	ELS 7/40 MM WS	Version
Order No.	2518620000	ELS, Insert markers, 40 x 6.3 mm, white
GTIN (EAN)	4050118531312	
Qty.	3000 ST	
Type	ELS 7/40 MM GE	Version
Order No.	2519160000	ELS, Insert markers, 40 x 6.3 mm, yellow
GTIN (EAN)	4050118531329	
Qty.	3000 ST	