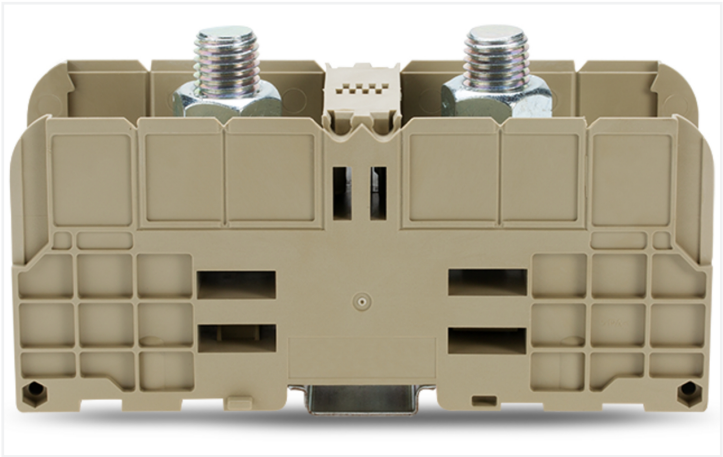


Color: ■ beige



Through terminal block, 884 Series, open-end/ring/socket wrench und 24 mm

Our through terminal block (item number 884-3000) makes connecting wires quick and easy. Featuring conductor terminals along with a bolt-type connection, this connector outperforms the competition. It features one level and two clamping points that you can use to connect a single potential. The beige housing is made of polyamide (PA66) for insulation. These high-current terminal blocks are mounted using DIN-35 rails or panel mountings..

Electrical data

Ratings per IEC/EN	
Nominal voltage (III/3)	1000 V
Rated impulse withstand voltage (III / 3)	8 kV
Rated current	520 A
Legend (ratings)	(III / 3) Δ Overvoltage category III / Pollution degree 3

Approvals per		UL 1059		
Use group		B	C	D
Rated voltage	1000 V	1000 V	-	
Rated current	420 A	420 A	-	

Power Loss	
Power loss, per pole (potential)	16.224 W
Rated current I <sub>N</sub> for specified power loss	520 A
Resistance value for specified, current-dependent power loss	6e-005 Ω

Connection data

Clamping units	2
Total number of potentials	1
Number of levels	1
Connection position	top

Connection 1	
Connection technology	Bolt-type connection
Actuation type	Open-end, ring, socket wrench; 24 mm
Connectable conductor materials	Copper
Nominal cross-section	300 mm²
Clamping range	25 ... 300 mm² / 6 AWG ... 600 kcmil
Type of cable lugs per DIN 46234	Cable lugs for solder-free connections Ring type, without insulating sleeve, for copper conductors
DIN 46234: 1 cable lug per side	25 ... 240 mm²
DIN 46234: 2 cable lugs per side	50 ... 240 mm²
Type of cable lugs per DIN 46235	Cable lugs for compression connections Cover plate type for copper conductors
DIN 46235: 1 cable lug per side	50 ... 300 mm²
DIN 46235: 2 cable lugs per side	50 ... 240 mm²



Connection 1

Thread size	M16
-------------	-----

Physical data

Width	55 mm / 2.165 inches
Height	164 mm / 6.457 inches
Depth from upper-edge of DIN-rail	86 mm / 3.386 inches

Mechanical data

Tightening torque	25 ... 60 Nm
Mounting type	DIN-35 rail Panel mounting

Material data

Note (material data)	<a href="#">Information on material specifications can be found here</a>
Color	beige
Insulation material (main housing)	Polyamide (PA66)
Flammability class per UL94	V0
Fire load	0 MJ
Weight	510 g

Environmental requirements

Continuous operating temperature	-40 ... +120 °C
----------------------------------	-----------------

Commercial data

PU (SPU)	5 pcs
Packaging type	Box
Country of origin	DE
GTIN	4055143941952
Customs tariff number	85369095000

Product classification

UNSPSC	39121410
ETIM 9.0	EC000897
ETIM 8.0	EC000897
ECCN	NO US CLASSIFICATION

Environmental Product Compliance

RoHS Compliance Status	Compliant, No Exemption
------------------------	-------------------------



Downloads

Environmental Product Compliance

Compliance Search

Environmental Product Compliance 884-3000

Download icon

CAD/CAE-Data

CAD data

2D/3D Models 884-3000

Download icon

CAE data

EPLAN Data Portal 884-3000

Download icon

ZUKEN Portal 884-3000

Download icon

1 Compatible Products

1.1 Optional Accessories

1.1.1 DIN-rail

1.1.1.1 Mounting accessories



**Item No.: 210-198**  
Copper carrier rail; 35 x 15 mm; 2.3 mm thick; 2 m long; unslotted; according to EN 60715; copper-colored



**Item No.: 210-508**  
Steel carrier rail; 35 x 15 mm; 1.5 mm thick; 2 m long; slotted; galvanized; similar to EN 60715; silver-colored



**Item No.: 210-197**  
Steel carrier rail; 35 x 15 mm; 1.5 mm thick; 2 m long; slotted; similar to EN 60715; silver-colored



**Item No.: 210-506**  
Steel carrier rail; 35 x 15 mm; 1.5 mm thick; 2 m long; unslotted; galvanized; similar to EN 60715; silver-colored



**Item No.: 210-114**  
Steel carrier rail; 35 x 15 mm; 1.5 mm thick; 2 m long; unslotted; similar to EN 60715; silver-colored



**Item No.: 210-118**  
Steel carrier rail; 35 x 15 mm; 2.3 mm thick; 2 m long; unslotted; according to EN 60715; silver-colored



**Item No.: 210-115**  
Steel carrier rail; 35 x 7.5 mm; 1 mm thick; 2 m long; slotted; according to EN 60715; "Hole width 18 mm; silver-colored



**Item No.: 210-112**  
Steel carrier rail; 35 x 7.5 mm; 1 mm thick; 2 m long; slotted; according to EN 60715; "Hole width 25 mm; silver-colored



**Item No.: 210-504**  
Steel carrier rail; 35 x 7.5 mm; 1 mm thick; 2 m long; slotted; galvanized; according to EN 60715; silver-colored




**Item No.: 210-113**  
Steel carrier rail; 35 x 7.5 mm; 1 mm thick; 2 m long; unslotted; according to EN 60715; silver-colored




**Item No.: 210-505**  
Steel carrier rail; 35 x 7.5 mm; 1 mm thick; 2 m long; unslotted; galvanized; according to EN 60715; silver-colored

1.1.2 Installation


1.1.2.1 Cover



**Item No.: 884-3080**  
Cover; for stud terminal block; 185 and 300 mm²; beige



**Item No.: 884-3084**  
Cover; for stud terminal block; 185 and 300 mm²; blue



**Item No.: 884-3086**  
Cover; for stud terminal block; 185 and 300 mm²; yellow



1.1.2.2 Mounting accessories



Item No.: 249-117

Screwless end stop; 10 mm wide; for DIN-rail 35 x 15 and 35 x 7.5; gray



Item No.: 249-197

Screwless end stop; 14 mm wide; for DIN-rail 35 x 15 and 35 x 7.5; gray

1.1.3 Jumper

1.1.3.1 Jumper



Item No.: 884-3042

Jumper; for M16 stud bolts; 2-way; unplated; white



Item No.: 884-3043

Jumper; for M16 stud bolts; 3-way; unplated; silver-colored

1.1.4 Marking

1.1.4.1 Marker



Item No.: 793-5501/000-006

WMB marking card; as card; for terminal block width 5 - 17.5 mm; stretchable 5 - 5.2 mm; plain; snap-on type; blue



Item No.: 793-5501/000-014

WMB marking card; as card; for terminal block width 5 - 17.5 mm; stretchable 5 - 5.2 mm; plain; snap-on type; brown



Item No.: 793-5501/000-007

WMB marking card; as card; for terminal block width 5 - 17.5 mm; stretchable 5 - 5.2 mm; plain; snap-on type; gray



Item No.: 793-5501/000-023

WMB marking card; as card; for terminal block width 5 - 17.5 mm; stretchable 5 - 5.2 mm; plain; snap-on type; green



Item No.: 793-5501/000-017

WMB marking card; as card; for terminal block width 5 - 17.5 mm; stretchable 5 - 5.2 mm; plain; snap-on type; light green



Item No.: 793-5501/000-012

WMB marking card; as card; for terminal block width 5 - 17.5 mm; stretchable 5 - 5.2 mm; plain; snap-on type; orange



Item No.: 793-5501/000-005

WMB marking card; as card; for terminal block width 5 - 17.5 mm; stretchable 5 - 5.2 mm; plain; snap-on type; red



Item No.: 793-5501/000-024

WMB marking card; as card; for terminal block width 5 - 17.5 mm; stretchable 5 - 5.2 mm; plain; snap-on type; violet



Item No.: 793-5501

WMB marking card; as card; for terminal block width 5 - 17.5 mm; stretchable 5 - 5.2 mm; plain; snap-on type; white



Item No.: 793-5501/000-002

WMB marking card; as card; for terminal block width 5 - 17.5 mm; stretchable 5 - 5.2 mm; plain; snap-on type; yellow



Item No.: 793-501/000-006

WMB marking card; as card; not stretchable; plain; snap-on type; blue



Item No.: 793-501/000-007

WMB marking card; as card; not stretchable; plain; snap-on type; gray



Item No.: 793-501/000-023

WMB marking card; as card; not stretchable; plain; snap-on type; green



Item No.: 793-501/000-017

WMB marking card; as card; not stretchable; plain; snap-on type; light green



Item No.: 793-501/000-012

WMB marking card; as card; not stretchable; plain; snap-on type; orange



Item No.: 793-501/000-005

WMB marking card; as card; not stretchable; plain; snap-on type; red



Item No.: 793-501/000-024

WMB marking card; as card; not stretchable; plain; snap-on type; violet



Item No.: 793-501

WMB marking card; as card; not stretchable; plain; snap-on type; white



Item No.: 793-501/000-002

WMB marking card; as card; not stretchable; plain; snap-on type; yellow



Item No.: 2009-115/000-006

WMB-Inline; for Smart Printer; 1500 pieces on roll; stretchable 5 - 5.2 mm; plain; snap-on type; blue



Item No.: 2009-115/000-007

WMB-Inline; for Smart Printer; 1500 pieces on roll; stretchable 5 - 5.2 mm; plain; snap-on type; gray



Item No.: 2009-115/000-023

WMB-Inline; for Smart Printer; 1500 pieces on roll; stretchable 5 - 5.2 mm; plain; snap-on type; green



Item No.: 2009-115/000-017

WMB-Inline; for Smart Printer; 1500 pieces on roll; stretchable 5 - 5.2 mm; plain; snap-on type; light green



Item No.: 2009-115/000-012

WMB-Inline; for Smart Printer; 1500 pieces on roll; stretchable 5 - 5.2 mm; plain; snap-on type; orange



Item No.: 2009-115/000-005

WMB-Inline; for Smart Printer; 1500 pieces on roll; stretchable 5 - 5.2 mm; plain; snap-on type; red



Item No.: 2009-115/000-024

WMB-Inline; for Smart Printer; 1500 pieces on roll; stretchable 5 - 5.2 mm; plain; snap-on type; violet



Item No.: 2009-115

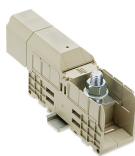
WMB-Inline; for Smart Printer; 1500 pieces on roll; stretchable 5 - 5.2 mm; plain; snap-on type; white



Item No.: 2009-115/000-002

WMB-Inline; for Smart Printer; 1500 pieces on roll; stretchable 5 - 5.2 mm; plain; snap-on type; yellow

## Installation Notes



## Conductor termination

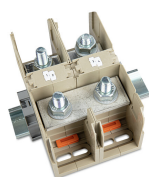


### Connecting Two Cable Lugs to a Stud

Up to two cable lugs can be connected to one stud. For this purpose, the cable lugs are placed back-to-back on the stud.

Then the hex flange nut is tightened with the required torque so that the lugs of the cable lugs press against each other and make secure contact with the current bar.

## Commoning



### Commoning

Step 1: Remove the inner partitions next to the studs.

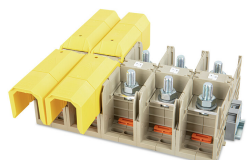
Step 2: Place the 2- or 3-way jumper on the studs to be connected.

Step 3: Tighten the hex flange nuts to the required torque.

Notice: The jumpers are positioned under the ring cable lug to be connected.

The jumpers are designed for the rated current of the respective stud terminal block.

## Cover



### Cover:

The covers are snapped from the top into the provided locking mechanism of the stud terminal block. The covers can be shortened with a cutting tool. The covers can be mounted on one or both sides and ensure reliable protection against contact.

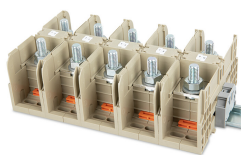
## Testing



### Testing

Voltage measurements can be performed directly on the studs. Thanks to the provided test slots, voltage measurements are also possible with mounted warning covers.

## Marking



### Marking

The stud terminal blocks can be labeled quickly and easily with the WMB Inline marking system. The markers are inserted into the receptacles provided for this purpose. The 2009-198 Marker Carrier allows marking strips to be used.