

Color: ■ green-yellow

Ground terminal block, 883 Series, t-wrench und 4 mm

Connecting conductors is quick and easy with this ground terminal block (item number 883-7007). Strip lengths must be 22 mm when connecting conductors to this ground terminal block. This product incorporates conductor terminals and utilizes a screw connection. This ground terminal block is suitable for conductor cross sections ranging from 10 mm² to 95 mm². The green-yellow housing is made of polyamide (PA66) for insulation. These high-current terminal blocks are mounted using DIN-35 rails..

Electrical data				
Ratings per		IEC/EN 60947-7-2		
Overvoltage category		III	III	II
Pollution degree		3	2	2
Nominal voltage		-	-	-
Rated surge voltage		-	-	-
Rated current		-	-	-
Approvals per		UL 1059		
Use group		B	C	D
Rated voltage		-	-	-
Approvals per		CSA 22.2 No 158		
Use group		B	C	D
Rated voltage		-	-	-
Connection data				
Total number of potentials	1	Connection 1		
Number of levels	1	Connection technology	Screw connection	
		Actuation type	T-wrench; 4 mm	
		Connectable conductor materials	Copper Aluminum	
		Connectable conductor materials (note)	Terminating Aluminum Conductors Both restrictions and application notes must be observed when terminating aluminum conductors. These instructions can be found in the WAGO Webshop under "Downloads – Documentation – Additional Information: Terminating Aluminum Conductors."	
		Nominal cross-section	70 mm²	
		Solid conductor	10 ... 95 mm² / 8 ... 3/0 AWG	
		Stranded conductor	10 ... 95 mm² / 8 ... 3/0 AWG	
		Fine-stranded conductor	10 ... 70 mm² / 8 ... 2/0 AWG	



Connection 1	
Fine-stranded conductor; with insulated ferrule	10 ... 70 mm² / 8 ... 2/0 AWG
Strip length	22 mm / 0.87 inches
Wiring direction	Side-entry wiring
Screw thread	M5

Physical data	
Width	20.5 mm / 0.807 inches
Height	76.5 mm / 3.012 inches
Depth from upper-edge of DIN-rail	84 mm / 3.307 inches

Mechanical data	
Tightening torque	2.5 ... 4 Nm
Design	horizontal type
Mounting type	DIN-35 rail
Marking level	Side marking

Material data	
Note (material data)	Information on material specifications can be found here
Color	green-yellow
Insulation material (main housing)	Polyamide (PA66)
Flammability class per UL94	V0
Fire load	0 MJ
Weight	192 g

Environmental requirements	
Continuous operating temperature	-35 ... +105 °C

Commercial data	
PU (SPU)	10 pcs
Packaging type	Box
Country of origin	DE
GTIN	4055143940825
Customs tariff number	85369010000

Product classification	
UNSPSC	39121410
ETIM 9.0	EC000901
ETIM 8.0	EC000901
ECCN	NO US CLASSIFICATION



Environmental Product Compliance	
RoHS Compliance Status	Compliant,No Exemption

Downloads

Environmental Product Compliance	
Compliance Search	
Environmental Product Compliance 883-7007	↓

Documentation

Additional Information			Bid Text		
Aluminum Conductors	pdf	83.11 KB	883-7007	xml	4.43 KB
		↓			↓
			883-7007	docx	13.71 KB
					↓

CAD/CAE-Data

CAD data			CAE data		
2D/3D Models			ZUKEN Portal		
883-7007		↓	883-7007		↓

1 Compatible Products

1.1 Optional Accessories

1.1.1 Connector

1.1.1.1 Insertion plate



Item No.: 883-7099
Insertion plate for flat cables; for 883 Series; 70 mm²; silver-colored

1.1.2 DIN-rail

1.1.2.1 Mounting accessories



Item No.: 210-198
Copper carrier rail; 35 x 15 mm; 2.3 mm thick; 2 m long; unslotted; according to EN 60715; copper-colored



1.1.3 Installation

1.1.3.1 Mounting accessories



Item No.: 249-117
Screwless end stop; 10 mm wide; for DIN-rail 35 x 15 and 35 x 7.5; gray



Item No.: 249-197
Screwless end stop; 14 mm wide; for DIN-rail 35 x 15 and 35 x 7.5; gray

1.1.4 Jumper

1.1.4.1 Jumper



Item No.: 883-7042
Jumper; 2-way; unplated; silver-colored



Item No.: 883-7043
Jumper; 3-way; unplated; silver-colored



Item No.: 883-7044
Jumper; 4-way; unplated; silver-colored

1.1.5 Marking

1.1.5.1 Marker



Item No.: 793-5501/000-006
WMB marking card; as card; for terminal block width 5 - 17.5 mm; stretchable 5 - 5.2 mm; plain; snap-on type; blue



Item No.: 793-5501/000-014
WMB marking card; as card; for terminal block width 5 - 17.5 mm; stretchable 5 - 5.2 mm; plain; snap-on type; brown



Item No.: 793-5501/000-007
WMB marking card; as card; for terminal block width 5 - 17.5 mm; stretchable 5 - 5.2 mm; plain; snap-on type; gray



Item No.: 793-5501/000-023
WMB marking card; as card; for terminal block width 5 - 17.5 mm; stretchable 5 - 5.2 mm; plain; snap-on type; green



Item No.: 793-5501/000-017
WMB marking card; as card; for terminal block width 5 - 17.5 mm; stretchable 5 - 5.2 mm; plain; snap-on type; light green



Item No.: 793-5501/000-012
WMB marking card; as card; for terminal block width 5 - 17.5 mm; stretchable 5 - 5.2 mm; plain; snap-on type; orange



Item No.: 793-5501/000-005
WMB marking card; as card; for terminal block width 5 - 17.5 mm; stretchable 5 - 5.2 mm; plain; snap-on type; red



Item No.: 793-5501/000-024
WMB marking card; as card; for terminal block width 5 - 17.5 mm; stretchable 5 - 5.2 mm; plain; snap-on type; violet



Item No.: 793-5501
WMB marking card; as card; for terminal block width 5 - 17.5 mm; stretchable 5 - 5.2 mm; plain; snap-on type; white



Item No.: 793-5501/000-002
WMB marking card; as card; for terminal block width 5 - 17.5 mm; stretchable 5 - 5.2 mm; plain; snap-on type; yellow



Item No.: 793-501/000-006
WMB marking card; as card; not stretchable; plain; snap-on type; blue



Item No.: 793-501/000-007
WMB marking card; as card; not stretchable; plain; snap-on type; gray



Item No.: 793-501/000-023
WMB marking card; as card; not stretchable; plain; snap-on type; green



Item No.: 793-501/000-017
WMB marking card; as card; not stretchable; plain; snap-on type; light green



Item No.: 793-501/000-012
WMB marking card; as card; not stretchable; plain; snap-on type; orange



Item No.: 793-501/000-005
WMB marking card; as card; not stretchable; plain; snap-on type; red



Item No.: 793-501/000-024
WMB marking card; as card; not stretchable; plain; snap-on type; violet



Item No.: 793-501
WMB marking card; as card; not stretchable; plain; snap-on type; white



Item No.: 793-501/000-002
WMB marking card; as card; not stretchable; plain; snap-on type; yellow



Item No.: 2009-115/000-006
WMB-Inline; for Smart Printer; 1500 pieces on roll; stretchable 5 - 5.2 mm; plain; snap-on type; blue



Item No.: 2009-115/000-007
WMB-Inline; for Smart Printer; 1500 pieces on roll; stretchable 5 - 5.2 mm; plain; snap-on type; gray



Item No.: 2009-115/000-023
WMB-Inline; for Smart Printer; 1500 pieces on roll; stretchable 5 - 5.2 mm; plain; snap-on type; green



Item No.: 2009-115/000-017
WMB-Inline; for Smart Printer; 1500 pieces on roll; stretchable 5 - 5.2 mm; plain; snap-on type; light green



Item No.: 2009-115/000-012
WMB-Inline; for Smart Printer; 1500 pieces on roll; stretchable 5 - 5.2 mm; plain; snap-on type; orange



Item No.: 2009-115/000-005
WMB-Inline; for Smart Printer; 1500 pieces on roll; stretchable 5 - 5.2 mm; plain; snap-on type; red



Item No.: 2009-115/000-024
WMB-Inline; for Smart Printer; 1500 pieces on roll; stretchable 5 - 5.2 mm; plain; snap-on type; violet



Item No.: 2009-115
WMB-Inline; for Smart Printer; 1500 pieces on roll; stretchable 5 - 5.2 mm; plain; snap-on type; white



Item No.: 2009-115/000-002
WMB-Inline; for Smart Printer; 1500 pieces on roll; stretchable 5 - 5.2 mm; plain; snap-on type; yellow

1.1.6 Power tap

1.1.6.1 Power tap



Item No.: 883-7030
Power tap; 10,00 mm²; beige

1.1.7 Protective warning marker

1.1.7.1 Cover



Item No.: 883-7088
Protective warning marker; with high-voltage symbol; white



Item No.: 883-7086
Protective warning marker; with high-voltage symbol; yellow

1.1.8 Tool

1.1.8.1 Operating tool



Item No.: 855-8000
Allen wrench; with a partially insulated shaft

Installation Notes

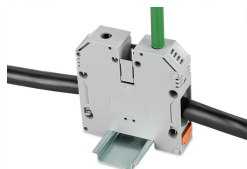
Installation



Mounting and Removing Ground Terminal Blocks

Installation is performed by placing the ground conductor terminal block on the copper DIN-rail and then securing it by tightening the Allen screw in the jumper slot with a torque of 2.5...4 Nm. A 4 mm Allen key is used to tighten the screw.
Removal is performed by loosening the Allen screw in the jumper slot and tilting it off the DIN-rail.

Conductor termination



Conductor Termination and Clamping Point Actuation

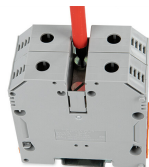
The stripped conductor is inserted into the clamping unit until it hits the backstop. By turning the screw to the right with a 6 mm T-wrench, the conductor is indirectly pressed against the current bar via the clamping bracket.

Commoning



Commoning

Step 1: Remove the inner partitions at the defined break points.



Commoning

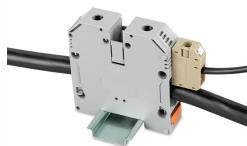
Step 2: Insert the jumper into the jumper slot and tighten the screws with a slotted screwdriver. The jumpers are designed for the rated current of the screw terminal block.



Insertion Plate

To connect flat cables, the insertion plates are mounted into the clamping bracket to compensate for the V-shaped geometry and provide a secure conductor connection.

Power tap



Power Tap

The power tap is inserted into the slot above the conductor entry and pressed indirectly against the current bar via the clamping bracket when the clamping point is actuated.

Cover



Protective Warning Marker

The warning covers marked with a lightning arrow (high voltage) are snapped onto the screw terminal block from above and close the actuation slot. This safeguard prevents actuation of the clamping point under voltage and guarantees protection against accidental contact.

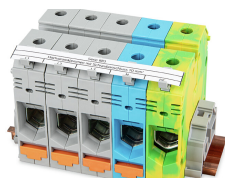
Testing



Testing

Voltage measurements can be performed via the screw heads in the actuation slot (e.g., via 2-pole 206-707 Voltage Tester).

Marking



Marking

The 2009-198 Marker Carrier allows marking strips to be used.



Marking

The screw terminal blocks can be labeled quickly and easily with the WMB Inline marking system. The markers are inserted into the receptacles provided for this purpose.