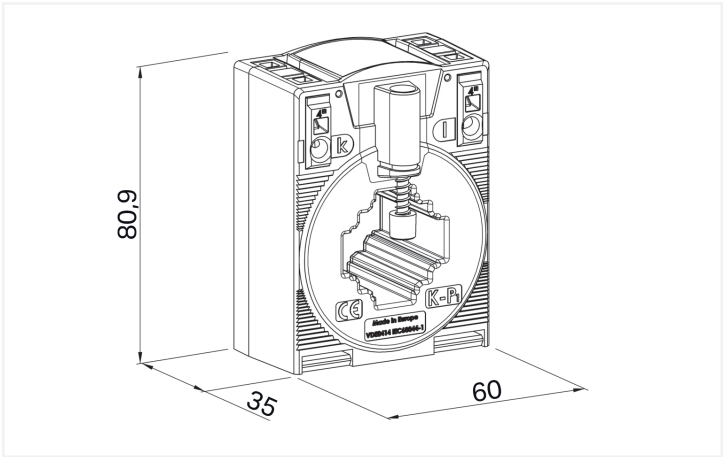
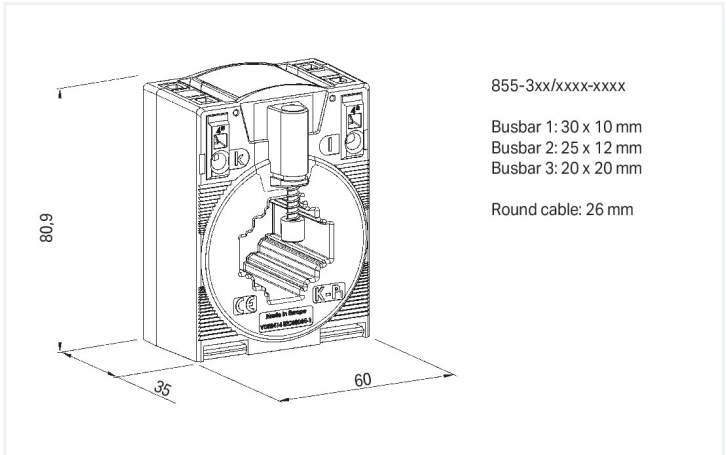
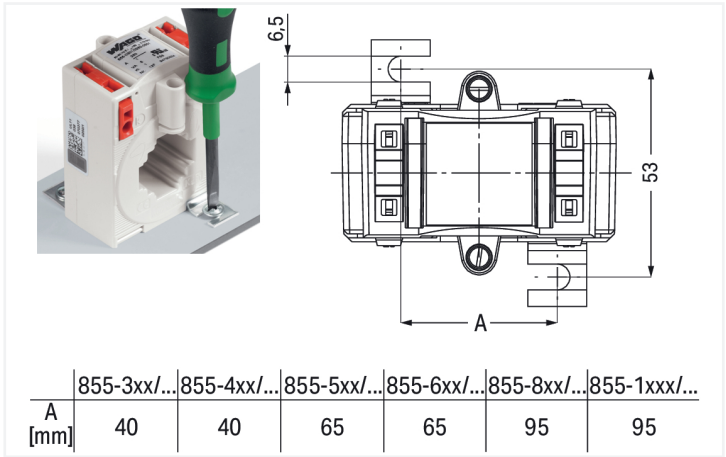




Similar to illustration



Dimensions in mm



Dimensions in mm

**Short description:**  
WAGO's plug-in current transformers (855 Series) are inductive, single-conductor current transformers. Due to the measurement principle used, these current transformers are exclusively designed for AC network applications.

**Features:**

- Screwless CAGE CLAMP® connection technology
- Several mounting options available
- Vibration- and shock-resistant
- High mechanical retention forces
- High current-carrying capacity
- Continuous overload of 120 % the nominal primary current
- Low-voltage current transformer for operating voltages up to max. 1.2 kV
- For 690 V power networks
- UL recognized components

Technical data			
Input		Input – current transformer	
Measured variable	Current	Rated continuous thermal current I <sub>cth</sub>	1.2 x I <sub>N</sub>
		Rated short-time thermal current I <sub>th</sub>	60 x I <sub>N</sub> / 1 s (max. 100 kA / 1 s)
		Overcurrent limiting factor	FS5 / FS10 (type dependent; see type plate inscription)
		Rated frequency	50 ... 60 Hz
		Primary rated current	200 A



Output – current transformer	
Secondary rated current	5 A
Rated power S <sub>p</sub>	5 VA

Measurement error	
Accuracy class	1

Safety and protection	
Test voltage	6 kVAC; 50 Hz; 1 min
Highest voltage for equipment U <sub>m</sub>	1.2 kV <sub>rms</sub> AC

Connection data	
Feedthrough for measurement conductor	Ø 26 mm
Connection 1	
Connection technology	CAGE CLAMP®
Strip length	9 ... 10 mm / 0.35 ... 0.39 inches
Solid conductor	0.08 ... 4 mm² / 28 ... 12 AWG
Fine-stranded conductor	0.08 ... 4 mm² / 28 ... 12 AWG

Physical data	
Width	60 mm / 2.362 inches
Height	80.9 mm / 3.185 inches
Depth	52 mm / 2.047 inches

Mechanical data	
Mounting type	Closed current transformer Installation on mounting plate Mounting on DIN-rail via DIN-rail adapter Installation on round cable

Material data	
Insulation class	E
Fire load	0 MJ
Weight	324 g

Environmental requirements	
Ambient temperature (operation)	-5 ... +50 °C
Ambient temperature (storage)	-25 ... +70 °C
Operating altitude (max.)	1000 m



Standards and specifications	
Conformity marking	CE
Standards/specifications	EN 61869-1 EN 61869-2 UL: E356480







Commercial data	
PU (SPU)	1 pcs
Packaging type	Box
Country of origin	HU
Customs tariff number	85043129900

Product classification	
UNSPSC	39121006
eCl@ss 10.0	27-21-09-02
eCl@ss 9.0	27-21-09-02
ETIM 9.0	EC002048
ETIM 8.0	EC002048
ECCN	NO US CLASSIFICATION

Environmental Product Compliance	
RoHS Compliance Status	Compliant, No Exemption

Approvals / Certificates		
General approvals		Declarations of conformity and manufacturer's declarations
<div></div>		
Approval	Standard	Certificate Name
EAC GZO Almaty Standart	TP TC 004/2011	EAC CoC 03082
UL Underwriters Laboratories Inc.	-	E356480
Approval	Standard	Certificate Name
EU-Declaration of Confor- mity WAGO GmbH & Co. KG	-	-
UK-Declaration of Confor- mity WAGO GmbH & Co. KG	-	-

Downloads	
Environmental Product Compliance	
Compliance Search	
Environmental Product Compliance 855-305/200-501	

Documentation						
Bid Text			Instruction Leaflet			
855-305/200-501	05.02.2015	doc 31.00 KB		Aufsteck-Stromwandler	pdf 1438.11 KB	
855-305/200-501	19.02.2019	xml 4.95 KB				



CAD/CAE-Data	
<div>CAD data</div> <div>2D/3D Models 855-305/200-501</div> <div>↓</div>	<div>CAE data</div> <div>EPLAN Data Portal 855-305/200-501</div> <div>↓</div>
	<div>WSCAD Universe 855-305/200-501</div> <div>↓</div>
	<div>ZUKEN Portal 855-305/200-501</div> <div>↓</div>

1 Compatible Products

1.1 Optional Accessories

1.1.1 Installation

1.1.1.1 Current transformer terminal block



[Item No.: 2007-8876](#)  
Compact terminal block; for 3-phase current transformer circuit; 6,00 mm²; multicoloured



[Item No.: 2007-8873](#)  
Compact terminal block; for current and voltage transformers; 6,00 mm²; multicoloured



[Item No.: 2007-8874](#)  
Compact terminal block; for current and voltage transformers; 6,00 mm²; multicoloured



[Item No.: 2007-8875](#)  
Compact terminal block; for current transformer circuit; 6,00 mm²; multicoloured



[Item No.: 2007-8877](#)  
Compact terminal block; for current transformer circuit; 6,00 mm²; multicoloured

1.1.2 Mounting adapter

1.1.2.1 DIN-rail adapter



[Item No.: 855-9900](#)  
Carrier rail adapter

1.1.2.2 Fast connection adapter



[Item No.: 855-9910](#)  
Quick-mount kit

1.1.3 Signal conditioner

1.1.3.1 Current signal conditioner



[Item No.: 857-551](#)  
Current signal conditioner; Current input signal; Current and voltage output signal; Digital output; Configuration via software; Supply voltage: 24 VDC; 6 mm module width



[Item No.: 857-550](#)  
Current signal conditioner; Current input signal; Current and voltage output signal; Digital output; Configuration via software; Supply voltage: 24 VDC; 6 mm module width; 2,50 mm²

1.1.3.2 Power measurement module



**Item No.: 2857-570/024-005**  
3-Phase Power Measurement Module;  
3x277/480 V/5 A; Modbus RTU; Digital  
output; Configuration via software; Supply  
voltage: 24 VDC

**Item No.: 857-569**  
Power signal conditioner; Current and vol-  
tage input signal; Current and voltage out-  
put signal; Digital output; Configuration  
via software; Supply voltage: 24 VDC; 6  
mm module width

1.1.4 Tool

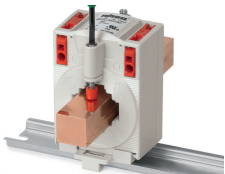
1.1.4.1 Operating tool



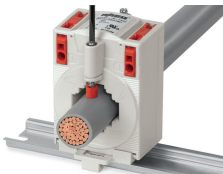
**Item No.: 210-720**  
Operating tool; Blade: 3.5 x 0.5 mm; with a  
partially insulated shaft; multicoloured

Installation Notes

Installation



Installation on copper current bar



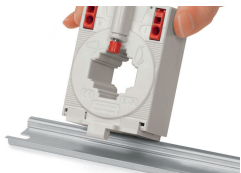
Installation on round cable



Installation on mounting plate



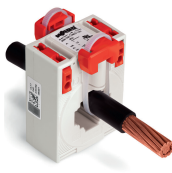
Mounting on DIN-rail via 855-9900 DIN-  
Rail Adapter



Snapping onto DIN-rail



Snapping onto DIN-rail



Installation via 855-9910 Quick-Mount Kit

Conductor termination



Conductor termination – screwdriver ac-  
tuation perpendicular to conductor entry



Conductor termination – screwdriver ac-  
tuation parallel to conductor entry