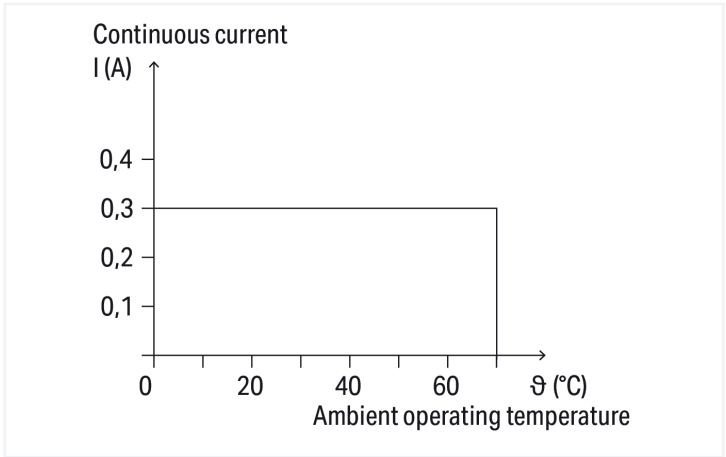
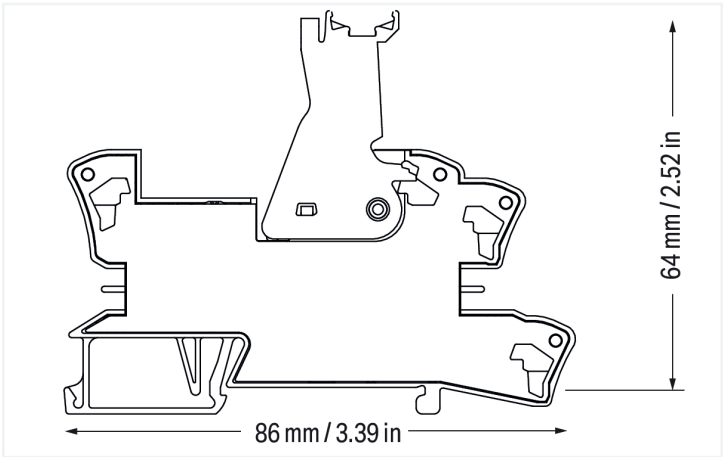
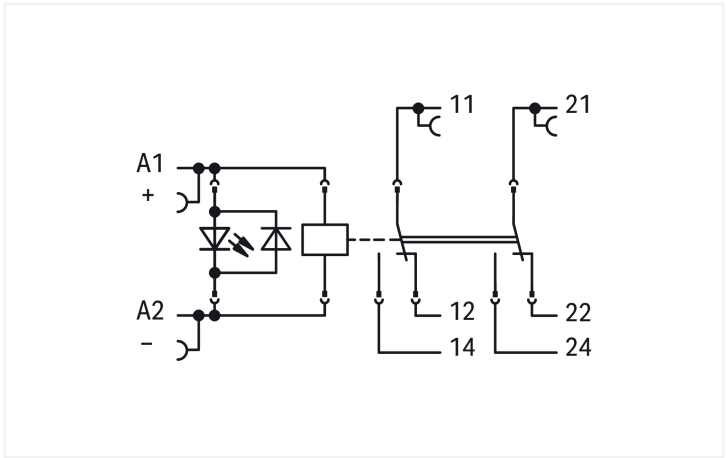
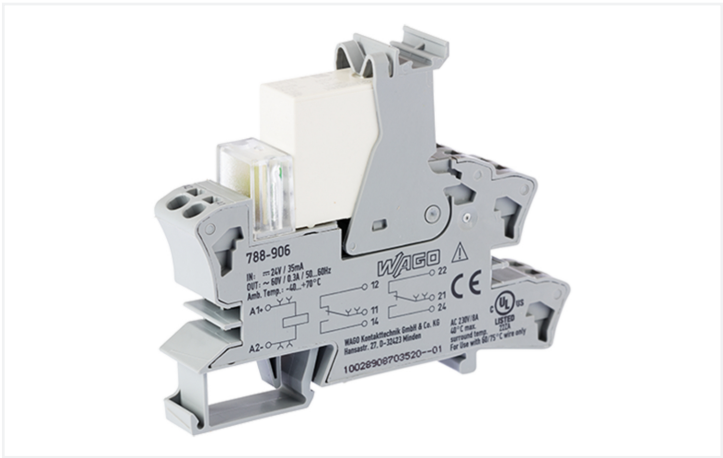


Data Sheet | Item Number: 788-906

Relay module with driven contacts; Nominal input voltage: 24 VDC; 2 changeover contacts; Limiting continuous current: 0.3 A; Green status indicator; Module width: 15 mm

<https://www.wago.com/788-906>



Current-carrying capacity curve

Notes

Safety Information	Per EN 61810-3, it is only permitted to use 1 make contact/1 break contact for safety circuits (11-14 and 22-21 or 12-11 and 21-24). A separator plate (e.g., 209-191) must be used for voltages greater than 250 V between adjacent relay modules and for compliance with the reinforced insulation requirements.
Note	Reinforced insulation between coil and contacts To protect the relay coils and contacts, inductive loads must be dampened with an effective protection circuit.

Technical data

Control circuit		Load circuit	
Nominal input voltage U_N	24 VDC	Number of changeover/switchover contacts	2
Input voltage range	-15 ... +10 %	Contact material (relay)	AgNi + Au
Nominal input current at U_N	30 mA	Limiting continuous current	0.3 A
		Switching Voltage, Max.	60 VAC
		Switching power (resistive) max.	AC 18 VA
		Recommended minimum load	0.1 V / 1 mA / 1 mW
		Pull-in time (typ.)	15 ms
		Drop-out time (typ.)	12 ms
		Electrical life (NO; resistive load; 23 °C)	200 x 10 ³ switching operations



Load circuit	
Mechanical life	50 x 10 ⁶ switching operations
Switching frequency with/without load (max.)	6 min ⁻¹ / 600 min ⁻¹
Mechanical force-guided operation	Type A

Signaling	
Status indicator	Green LED

Safety and protection	
Rated Voltage	250 V
Rated impulse withstand voltage	4 kV
Pollution degree	2
Dielectric strength (control/load circuit) (AC, 1 min)	4 kVrms
Dielectric strength (open contact) (AC, 1 min)	1.5 kVrms
Dielectric strength (load/load circuit) (AC, 1 min)	2.5 kVrms
Safety Information	Per EN 61810-3, it is only permitted to use 1 make contact/1 break contact for safety circuits (11-14 and 22-21 or 12-11 and 21-24). A separator plate (e.g., 209-191) must be used for voltages greater than 250 V between adjacent relay modules and for compliance with the reinforced insulation requirements.
Protection type	IP20

Connection data	
Connection technology	Push-in CAGE CLAMP®
Solid conductor	0.34 ... 2.5 mm ² / 22 ... 14 AWG
Fine-stranded conductor	0.34 ... 2.5 mm ² / 22 ... 14 AWG
Strip length	9 ... 10 mm / 0.35 ... 0.39 inches

Physical data	
Width	15 mm / 0.591 inches
Height	86 mm / 3.386 inches
Depth from upper-edge of DIN-rail	64 mm / 2.52 inches

Mechanical data	
Mounting type	DIN-35 rail

Material data	
Note (material data)	Information on material specifications can be found here
Fire load	0.678 MJ
Weight	50 g

Environmental requirements	
Ambient temperature (operation at U _N)	-40 ... +70 °C
Ambient temperature UL (operation at U _N)	-40 ... +40 °C
Ambient temperature (storage)	-40 ... +70 °C
Processing temperature	-25 ... +50 °C
Temperature range of connection cable	≥ (T _{ambient} + 20 K)




Standards and specifications	
Standards/specifications	EN 61010-2-201 EN 61810-1 EN 61810-3 UL 508 (max. 40 °C)

Commercial data	
Product Group	6 (INTERFACE ELECTRONIC)
PU (SPU)	15 (1) pcs
Packaging type	Box
Country of origin	DE
GTIN	4045454515126
Customs tariff number	85364900990


Product classification	
UNSPSC	39122334
eCl@ss 10.0	27-37-16-01
eCl@ss 9.0	27-37-16-01
ETIM 9.0	EC001437
ETIM 8.0	EC001437
ECCN	NO US CLASSIFICATION

Environmental Product Compliance	
RoHS Compliance Status	Compliant,No Exemption

Approvals / Certificates

General approvals		Declarations of conformity and manufacturer's declarations
		
Approval	Standard	Certificate Name
EAC GZO Almaty Standart	TP TC 004/2011	EAC CoC 03084
UL Underwriters Laboratories Inc. (ORDINARY LOCATIONS)	UL 508	E175199 Vol.1 Sec.6
Approval	Standard	Certificate Name
EU-Declaration of Conformity WAGO GmbH & Co. KG	-	-
UK-Declaration of Conformity WAGO GmbH & Co. KG	-	-

Downloads

Environmental Product Compliance	
Compliance Search	
Environmental Product Compliance 788-906	



Documentation				
Bid Text			Instruction Leaflet	
788-906	19.02.2019	xml 4.91 KB	Sockets with Elementa- ry Relay/ SSR	V 1.0.1 09.10.2020
788-906	25.01.2019	docx 17.03 KB		pdf 2271.22 KB

CAD/CAE-Data	
CAD data	CAE data
2D/3D Models 788-906	EPLAN Data Portal 788-906
	WSCAD Universe 788-906
	ZUKEN Portal 788-906

1 Compatible Products

1.1 Optional Accessories

1.1.1 Ferrule

1.1.1.1 Ferrule

Item No.: 216-241 Ferrule; Sleeve for 0.5 mm² / 20 AWG; in- sulated; electro-tin plated; electrolytic copper; gastight crimped; acc. to DIN 46228, Part 4/09.90; white	Item No.: 216-242 Ferrule; Sleeve for 0.75 mm² / 18 AWG; in- sulated; electro-tin plated; electrolytic copper; gastight crimped; acc. to DIN 46228, Part 4/09.90; gray	Item No.: 216-243 Ferrule; Sleeve for 1 mm² / AWG 18; insu- lated; electro-tin plated; electrolytic cop- per; gastight crimped; acc. to DIN 46228, Part 4/09.90; red	Item No.: 216-244 Ferrule; Sleeve for 1.5 mm² / AWG 16; in- sulated; electro-tin plated; electrolytic copper; gastight crimped; acc. to DIN 46228, Part 4/09.90; black
Item No.: 216-542 Twin ferrule; Sleeve for 2 x 1 mm² / AWG 2 x 18; red, insulated; 12 mm long; red			

1.1.2 Indicators

1.1.2.1 Status indication

Item No.: 788-120 Accessories for relay modules; Operation status indicator: red; Nominal operating voltage: 24 VDC



1.1.3 Jumper

1.1.3.1 Jumper



Item No.: 788-118
Jumper; for jumper slot; 2-way; from 1 to 3; insulated; light gray



Item No.: 788-113
Jumper; for jumper slot; 2-way; insulated; light gray



Item No.: 859-402
Jumper; for jumper slot; 2-way; insulated; light gray



Item No.: 788-114
Jumper; for jumper slot; 3-way; insulated; light gray



Item No.: 788-115
Jumper; for jumper slot; 4-way; insulated; light gray



Item No.: 788-116
Jumper; for jumper slot; 6-way; insulated; light gray



Item No.: 788-117
Jumper; for jumper slot; 8-way; insulated; light gray

1.1.4 Marking

1.1.4.1 Double marker carrier



Item No.: 209-128
Adaptor; gray

1.1.4.2 Group marker carrier



Item No.: 249-105
Group marker carrier; gray



Item No.: 209-145
Group marker carrier; white

1.1.4.3 Marker



Item No.: 209-183
Marker; white



Item No.: 793-502
WMB marking card; as card; MARKED; 1 ... 10 (10x); not stretchable; Horizontal marking; snap-on type; white



Item No.: 793-503
WMB marking card; as card; MARKED; 11 ... 20 (10x); not stretchable; Horizontal marking; snap-on type; white



Item No.: 793-504
WMB marking card; as card; MARKED; 21 ... 30 (10x); not stretchable; Horizontal marking; snap-on type; white



Item No.: 793-505
WMB marking card; as card; MARKED; 31 ... 40 (10x); not stretchable; Horizontal marking; snap-on type; white



Item No.: 793-501
WMB marking card; as card; not stretchable; plain; snap-on type; white



Item No.: 2009-115
WMB-Inline; for Smart Printer; 1500 pieces on roll; stretchable 5 - 5.2 mm; plain; snap-on type; white

1.1.4.4 Marking device



Item No.: 210-110
Fiber-tip pen

1.1.4.5 Marking strip



Item No.: 2009-110

Marking strips; for Smart Printer; on reel; not stretchable; plain; snap-on type; white

1.1.4.6 Protective marker cover



Item No.: 209-184

Protection cover; transparent

1.1.5 Tool

1.1.5.1 Operating tool

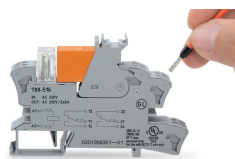


Item No.: 210-720

Operating tool; Blade: 3.5 x 0.5 mm; with a partially insulated shaft; multicoloured

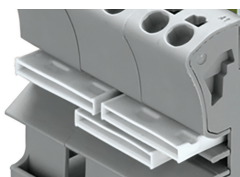
Installation Notes

Conductor termination



Conductor termination

Commoning



Easy commoning using adjacent jumpers

Marking



Marking using WMB Multi markers and group marker carriers.