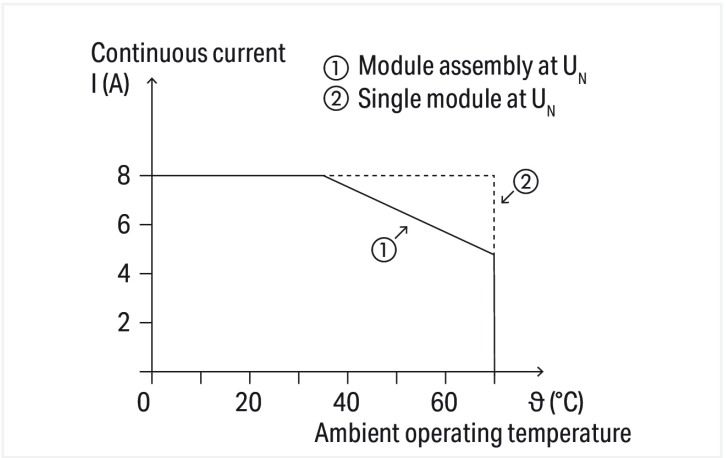
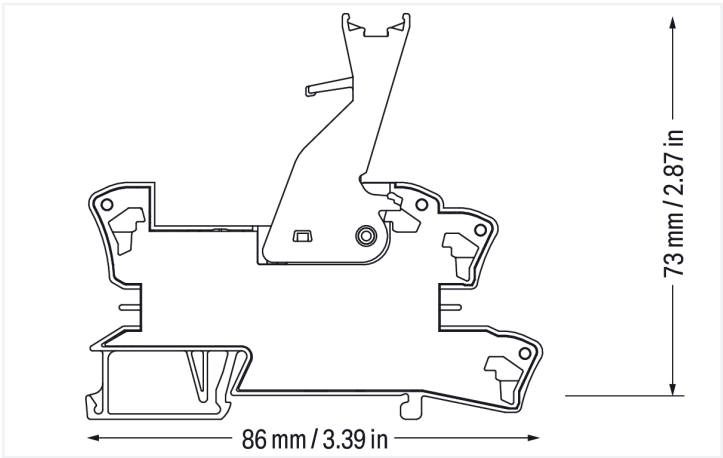
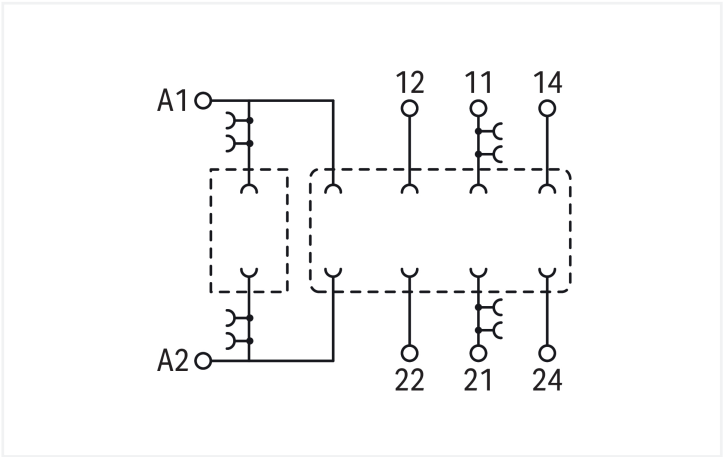


Similar to illustration



Current-carrying capacity curve

Notes	
Note	The specified technical data are maximum values. They may be limited by the accessories used.

Technical data			
Control circuit		Load circuit	
Nominal input voltage $U_N$	230 VAC/VDC	Number of changeover/switchover contacts	2
Input voltage range	0 ... 250 VAC/VDC	Limiting continuous current	8 A
Nominal frequency range	50 ... 60 Hz	Switching Voltage, Max.	300 VAC
		Nominal frequency range	≤60 Hz



Safety and protection		
Rated Voltage		300 V
Overvoltage category		II
Pollution degree		3
Dielectric strength (control/load circuit) (AC, 1 min)		3.6 kVrms
Dielectric strength (open contact) (AC, 1 min)		1 kVrms
Insulation type (control/load circuit)		Reinforced insulation (safe isolation)
Insulation type (load/load circuit)		Basic insulation
Insulation type (between adjacent devices of the same type)		Basic insulation
Protection type		IP20

Connection data		
Connection technology		Push-in CAGE CLAMP®
Solid conductor		0.34 ... 2.5 mm² / 22 ... 14 AWG
Fine-stranded conductor		0.34 ... 2.5 mm² / 22 ... 14 AWG
Strip length		9 ... 10 mm / 0.35 ... 0.39 inches

Physical data		
Width		15 mm / 0.591 inches
Height		86 mm / 3.386 inches
Depth from upper-edge of DIN-rail		73 mm / 2.874 inches

Mechanical data		
Mounting type		DIN-35 rail

Material data		
Note (material data)		<a href="#">Information on material specifications can be found here</a>
Fire load		0.662 MJ
Weight		31.6 g
Relative temperature index for plastic (RTI per UL)		105 °C

Environmental requirements		
Ambient temperature (operation at U <sub>N</sub> )		-40 ... +70 °C
Ambient temperature (storage)		-40 ... +80 °C
Processing temperature		-25 ... +50 °C
Temperature range of connection cable		≥ (T <sub>ambient</sub> + 20 K)
Relative humidity		5 ... 95 % (no condensation permissible)
Operating altitude (max.)		2000 m


Standards and specifications		
Standards/specifications		EN 61010-2-201





Commercial data		
Product Group	6 (INTERFACE ELECTRONIC)	
PU (SPU)	15 (1) pcs	
Packaging type	Box	
Country of origin	CN	
GTIN	4045454931049	
Customs tariff number	85366990990	

Product classification		
UNSPSC	39122335	
eCl@ss 10.0	27-37-16-03	
eCl@ss 9.0	27-37-16-03	
ETIM 9.0	EC001456	
ETIM 8.0	EC001456	
ECCN	NO US CLASSIFICATION	

Environmental Product Compliance		
RoHS Compliance Status	Compliant, No Exemption	

Approvals / Certificates		
General approvals		Declarations of conformity and manufacturer's declarations
		
Approval	Standard	Certificate Name
EAC	TP TC 004/2011	EAC CoC 03084
GZO Almaty Standart		
Approval	Standard	Certificate Name
EU-Declaration of Confor- mity WAGO GmbH & Co. KG	-	-
UK-Declaration of Confor- mity WAGO GmbH & Co. KG	-	-

Downloads	
Environmental Product Compliance	
Compliance Search	
Environmental Product Compliance 788-109	

Documentation			
Instruction Leaflet			
Sockets with Elementa- ry Relay/ SSR	V 1.0.1 09.10.2020	pdf 2271.22 KB	

CAD/CAE-Data

CAD data

2D/3D Models 788-109

1 Compatible Products

1.1 Optional Accessories

1.1.1 Basic relay

1.1.1.1 Basic relay



**Item No.: 788-936**  
Basic relay; Nominal input voltage: 24 VDC; 2 changeover contacts; Limiting continuous current: 8 A; with manual operation; Module width: 13 mm

1.1.2 Ferrule

1.1.2.1 Ferrule



**Item No.: 216-241**  
Ferrule; Sleeve for 0.5 mm² / 20 AWG; insulated; electro-tin plated; electrolytic copper; gastight crimped; acc. to DIN 46228, Part 4/09.90; white



**Item No.: 216-242**  
Ferrule; Sleeve for 0.75 mm² / 18 AWG; insulated; electro-tin plated; electrolytic copper; gastight crimped; acc. to DIN 46228, Part 4/09.90; gray



**Item No.: 216-243**  
Ferrule; Sleeve for 1 mm² / AWG 18; insulated; electro-tin plated; electrolytic copper; gastight crimped; acc. to DIN 46228, Part 4/09.90; red



**Item No.: 216-244**  
Ferrule; Sleeve for 1.5 mm² / AWG 16; insulated; electro-tin plated; electrolytic copper; gastight crimped; acc. to DIN 46228, Part 4/09.90; black



**Item No.: 216-542**  
Twin ferrule; Sleeve for 2 x 1 mm² / AWG 2 x 18; red, insulated; 12 mm long; red

1.1.3 Filter module

1.1.3.1 Suppressor module



**Item No.: 788-148**  
Filter module; RC filter element; Nominal voltage: 230 VAC



1.1.4 Indicators

1.1.4.1 Status indication



**Item No.: 788-124**  
Accessories for relay modules; Operation status indicator: red



**Item No.: 788-125**  
Accessories for relay modules; Operation status indicator: red



**Item No.: 788-121**  
Accessories for relay modules; Operation status indicator: red; Nominal operating voltage range: 48 ... 60 VDC



**Item No.: 788-122**  
Accessories for relay modules; Operation status indicator: red; Nominal operating voltage: 110 VDC



**Item No.: 788-123**  
Accessories for relay modules; Operation status indicator: red; Nominal operating voltage: 24 VAC



**Item No.: 788-120**  
Accessories for relay modules; Operation status indicator: red; Nominal operating voltage: 24 VDC

1.1.5 Jumper

1.1.5.1 Jumper



**Item No.: 788-118**  
Jumper; for jumper slot; 2-way; from 1 to 3; insulated; light gray



**Item No.: 788-113**  
Jumper; for jumper slot; 2-way; insulated; light gray



**Item No.: 859-402**  
Jumper; for jumper slot; 2-way; insulated; light gray



**Item No.: 788-114**  
Jumper; for jumper slot; 3-way; insulated; light gray



**Item No.: 788-115**  
Jumper; for jumper slot; 4-way; insulated; light gray



**Item No.: 788-116**  
Jumper; for jumper slot; 6-way; insulated; light gray



**Item No.: 788-117**  
Jumper; for jumper slot; 8-way; insulated; light gray

1.1.6 Marking

1.1.6.1 Double marker carrier



**Item No.: 209-128**  
Adaptor; gray

1.1.6.2 Group marker carrier



**Item No.: 249-105**  
Group marker carrier; gray



**Item No.: 209-145**  
Group marker carrier; white

1.1.6.3 Marker



**Item No.: 209-183**  
Marker; white



**Item No.: 793-502**  
WMB marking card; as card; MARKED; 1 ... 10 (10x); not stretchable; Horizontal marking; snap-on type; white



**Item No.: 793-503**  
WMB marking card; as card; MARKED; 11 ... 20 (10x); not stretchable; Horizontal marking; snap-on type; white



**Item No.: 793-504**  
WMB marking card; as card; MARKED; 21 ... 30 (10x); not stretchable; Horizontal marking; snap-on type; white



**Item No.: 793-505**  
WMB marking card; as card; MARKED; 31 ... 40 (10x); not stretchable; Horizontal marking; snap-on type; white



**Item No.: 793-501**  
WMB marking card; as card; not stretchable; plain; snap-on type; white



**Item No.: 2009-115**  
WMB-Inline; for Smart Printer; 1500 pieces on roll; stretchable 5 - 5.2 mm; plain; snap-on type; white



1.1.6.4 Marking device



Item No.: 210-110  
Fiber-tip pen

1.1.6.5 Marking strip



Item No.: 2009-110  
Marking strips; for Smart Printer; on reel;  
not stretchable; plain; snap-on type; white

1.1.6.6 Protective marker cover



Item No.: 209-184  
Protection cover; transparent

1.1.7 Tool

1.1.7.1 Operating tool



Item No.: 210-720  
Operating tool; Blade: 3.5 x 0.5 mm; with a  
partially insulated shaft; multicoloured