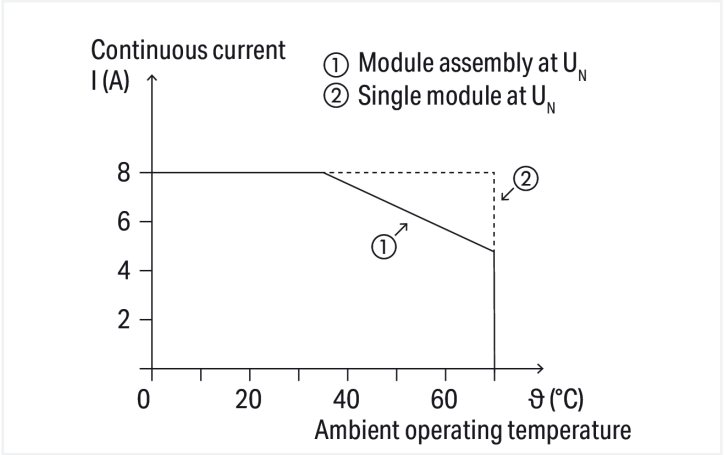
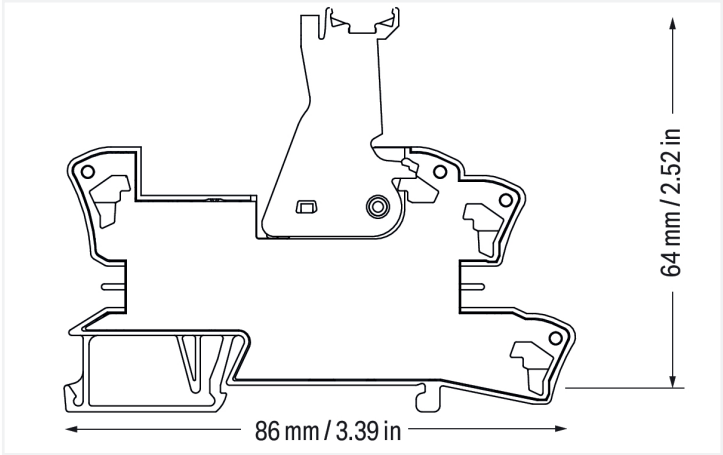
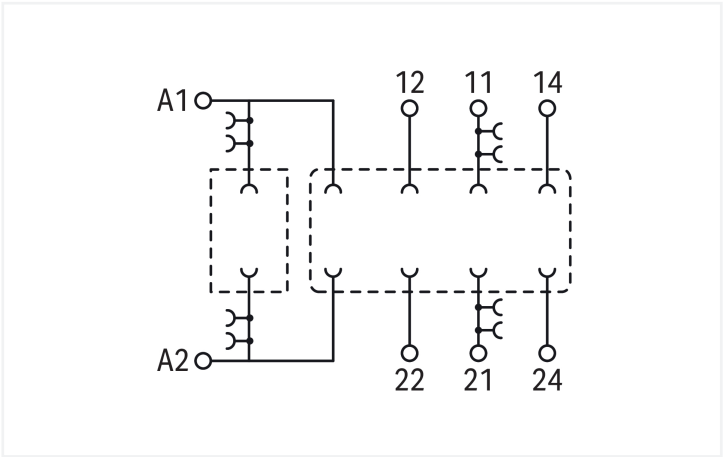


Color: ■ gray

Similar to illustration



Current-carrying capacity curve

Notes	
Note	The specified technical data are maximum values. They may be limited by the accessories used.

Technical data			
Control circuit		Load circuit	
Nominal input voltage U_N	230 VAC/VDC	Number of changeover/switchover contacts	2
Input voltage range	0 ... 250 VAC/VDC	Limiting continuous current	8 A
Nominal frequency range	50 ... 60 Hz	Switching Voltage, Max.	300 VAC
		Nominal frequency range	≤60 Hz



Safety and protection		
Rated Voltage		300 V
Overvoltage category		II
Pollution degree		3
Dielectric strength (control/load circuit) (AC, 1 min)		3.6 kVrms
Dielectric strength (open contact) (AC, 1 min)		1 kVrms
Insulation type (control/load circuit)		Reinforced insulation (safe isolation)
Insulation type (load/load circuit)		Basic insulation
Insulation type (between adjacent devices of the same type)		Basic insulation
Protection type		IP20

Connection data		
Connection technology		Push-in CAGE CLAMP®
Solid conductor		0.34 ... 2.5 mm² / 22 ... 14 AWG
Fine-stranded conductor		0.34 ... 2.5 mm² / 22 ... 14 AWG
Strip length		9 ... 10 mm / 0.35 ... 0.39 inches

Physical data		
Width		15 mm / 0.591 inches
Height		86 mm / 3.386 inches
Depth from upper-edge of DIN-rail		64 mm / 2.52 inches

Mechanical data		
Mounting type		DIN-35 rail

Material data		
Note (material data)		Information on material specifications can be found here
Color		gray
Fire load		0.645 MJ
Weight		31 g
Relative temperature index for plastic (RTI per UL)		105 °C

Environmental requirements		
Ambient temperature (operation at U _N)		-40 ... +70 °C
Ambient temperature (storage)		-40 ... +80 °C
Processing temperature		-25 ... +50 °C
Temperature range of connection cable		≥ (T _{ambient} + 20 K)
Relative humidity		5 ... 95 % (no condensation permissible)
Operating altitude (max.)		2000 m


Standards and specifications		
Standards/specifications		EN 61010-2-201



Commercial data		
Product Group	6 (INTERFACE ELECTRONIC)	
PU (SPU)	15 (1) pcs	
Packaging type	Box	
Country of origin	CN	
GTIN	4050821591801	
Customs tariff number	85366990990	

Product classification		
UNSPSC	39122335	
eCl@ss 10.0	27-37-16-03	
eCl@ss 9.0	27-37-16-03	
ETIM 9.0	EC001456	
ETIM 8.0	EC001456	
ECCN	NO US CLASSIFICATION	

Environmental Product Compliance		
RoHS Compliance Status	Compliant,No Exemption	

Approvals / Certificates		
General approvals		Declarations of conformity and manufacturer's declarations
		
Approval	Standard	Certificate Name
EAC	TP TC 004/2011	EAC CoC 03084
GZO Almaty Standart		
Approval	Standard	Certificate Name
EU-Declaration of Confor- mity WAGO GmbH & Co. KG	-	-
UK-Declaration of Confor- mity WAGO GmbH & Co. KG	-	-

Downloads	
Environmental Product Compliance	
Compliance Search	
Environmental Product Compliance 788-103	

Documentation					
Bid Text			Instruction Leaflet		
788-103	19.02.2019	xml 3.61 KB	Sockets with Elementa- ry Relay/ SSR	V 1.0.1 09.10.2020	pdf 2271.22 KB
788-103	20.02.2019	docx 16.05 KB			









CAD/CAE-Data	
CAD data	CAE data
2D/3D Models 788-103	EPLAN Data Portal 788-103
	WSCAD Universe 788-103
	ZUKEN Portal 788-103

1 Compatible Products
1.1 Optional Accessories
1.1.1 Basic relay
1.1.1.1 Basic relay



[Item No.: 788-181](#)
Basic relay; Nominal input voltage: 230 VAC; 2 changeover contacts; Limiting continuous current: 8 A; with gold contacts; Module width: 13 mm; Module height: 15 mm

1.1.2 Ferrule				
1.1.2.1 Ferrule				
				
Item No.: 216-241 Ferrule; Sleeve for 0.5 mm ² / 20 AWG; insulated; electro-tin plated; electrolytic copper; gastight crimped; acc. to DIN 46228, Part 4/09.90; white	Item No.: 216-242 Ferrule; Sleeve for 0.75 mm ² / 18 AWG; insulated; electro-tin plated; electrolytic copper; gastight crimped; acc. to DIN 46228, Part 4/09.90; gray	Item No.: 216-243 Ferrule; Sleeve for 1 mm ² / AWG 18; insulated; electro-tin plated; electrolytic copper; gastight crimped; acc. to DIN 46228, Part 4/09.90; red	Item No.: 216-244 Ferrule; Sleeve for 1.5 mm ² / AWG 16; insulated; electro-tin plated; electrolytic copper; gastight crimped; acc. to DIN 46228, Part 4/09.90; black	
				
Item No.: 216-542 Twin ferrule; Sleeve for 2 x 1 mm ² / AWG 2 x 18; red, insulated; 12 mm long; red				

1.1.3 Filter module
1.1.3.1 Suppressor module
 Item No.: 788-148 Filter module; RC filter element; Nominal voltage: 230 VAC



1.1.4 Indicators

1.1.4.1 Status indication



[Item No.: 788-124](#)
Accessories for relay modules; Operation status indicator: red



[Item No.: 788-125](#)
Accessories for relay modules; Operation status indicator: red



[Item No.: 788-121](#)
Accessories for relay modules; Operation status indicator: red; Nominal operating voltage range: 48 ... 60 VDC



[Item No.: 788-122](#)
Accessories for relay modules; Operation status indicator: red; Nominal operating voltage: 110 VDC



[Item No.: 788-123](#)
Accessories for relay modules; Operation status indicator: red; Nominal operating voltage: 24 VAC



[Item No.: 788-120](#)
Accessories for relay modules; Operation status indicator: red; Nominal operating voltage: 24 VDC

1.1.5 Jumper

1.1.5.1 Jumper



[Item No.: 788-118](#)
Jumper; for jumper slot; 2-way; from 1 to 3; insulated; light gray



[Item No.: 788-113](#)
Jumper; for jumper slot; 2-way; insulated; light gray



[Item No.: 859-402](#)
Jumper; for jumper slot; 2-way; insulated; light gray



[Item No.: 788-114](#)
Jumper; for jumper slot; 3-way; insulated; light gray



[Item No.: 788-115](#)
Jumper; for jumper slot; 4-way; insulated; light gray



[Item No.: 788-116](#)
Jumper; for jumper slot; 6-way; insulated; light gray



[Item No.: 788-117](#)
Jumper; for jumper slot; 8-way; insulated; light gray

1.1.6 Marking

1.1.6.1 Double marker carrier



[Item No.: 209-128](#)
Adaptor; gray

1.1.6.2 Group marker carrier



[Item No.: 249-105](#)
Group marker carrier; gray



[Item No.: 209-145](#)
Group marker carrier; white

1.1.6.3 Marker



[Item No.: 209-183](#)
Marker; white



[Item No.: 793-502](#)
WMB marking card; as card; MARKED; 1 ... 10 (10x); not stretchable; Horizontal marking; snap-on type; white



[Item No.: 793-503](#)
WMB marking card; as card; MARKED; 11 ... 20 (10x); not stretchable; Horizontal marking; snap-on type; white



[Item No.: 793-504](#)
WMB marking card; as card; MARKED; 21 ... 30 (10x); not stretchable; Horizontal marking; snap-on type; white



[Item No.: 793-505](#)
WMB marking card; as card; MARKED; 31 ... 40 (10x); not stretchable; Horizontal marking; snap-on type; white



[Item No.: 793-501](#)
WMB marking card; as card; not stretchable; plain; snap-on type; white



[Item No.: 2009-115](#)
WMB-Inline; for Smart Printer; 1500 pieces on roll; stretchable 5 - 5.2 mm; plain; snap-on type; white

1.1.6.4 Marking device



Item No.: 210-110
Fiber-tip pen

1.1.6.5 Marking strip



Item No.: 2009-110
Marking strips; for Smart Printer; on reel;
not stretchable; plain; snap-on type; white

1.1.6.6 Protective marker cover



Item No.: 209-184
Protection cover; transparent

1.1.7 Tool

1.1.7.1 Operating tool



Item No.: 210-720
Operating tool; Blade: 3.5 x 0.5 mm; with a
partially insulated shaft; multicoloured