

<https://www.wago.com/769-610/002-000>



Technical drawings of the 10-pin connector showing dimensions in millimeters (mm).

Dimensions shown in the drawings:

- Top view dimensions: 40,2, 22,2, 18,3, 15,6, 5, 9,1, 5, 2,6, 2,9.
- Bottom view dimensions: 2,9, 24,6, 5,1, 7,8, 2,5, 28,5, 11,7, 2,9.

Formulas for dimensions:

- $C = A + 15,4 \text{ mm}$
- $B = A + 3,6 \text{ mm}$
- $A = \text{pole no.} \times \text{pin spacing}$

Dimensions in mm

This male connector (item number 769-610/002-000) simplifies electrical installations. Pluggable rail-mount terminal blocks are hugely popular in switchgear and control systems, for example, in railroad technology. They combine the best of rail-mount terminal blocks and connectors to create the perfect solution. Variable wiring systems make pre-assembly easy, which saves both time and money in production, installation, operation, and maintenance. Our pluggable rail-mount terminal block is rated for 500 V and is designed to handle a rated current of up to 32 A. Strip lengths must be between 8 mm and 9 mm when connecting conductors to this male connector. This product features conductor terminals and utilizes CAGE CLAMP®. Our proven universal connection known as CAGE CLAMP® is the industry standard for connection technology and electrical interconnections. Depending on the type of conductor, this male connector is ideal for conductor cross sections ranging from 0.08 mm² to 4 mm². You can connect ten potentials / ten poles using the ten clamping points. The gray housing is made of polyamide (PA66) for insulation. This male connector/plug is operated with an operating tool. The front-entry wiring makes it possible to connect copper conductors.

Ratings per IEC/EN

Nominal voltage (III/3)	500 V
Rated impulse withstand voltage (III / 3)	6 kV
Rated current	32 A
Legend (ratings)	(III / 3) \triangleq Overvoltage category III / Pollution degree 3

Clamping units	10
Total number of potentials	10

Connection technology	CAGE CLAMP®
Actuation type	Operating tool
Connectable conductor materials	Copper
Nominal cross-section	4 mm² / 12 AWG
Solid conductor	0.08 ... 4 mm² / 28 ... 12 AWG
Fine-stranded conductor	0.08 ... 4 mm² / 28 ... 12 AWG
Strip length	8 ... 9 mm / 0.31 ... 0.35 inches
Pole number	10
Wiring direction	Front-entry wiring

Physical data

Pin spacing	5 mm / 0.197 inches
Width	65.4 mm / 2.575 inches
Height from the surface	18.3 mm / 0.72 inches
Depth	40.2 mm / 1.583 inches

Mechanical data

Variable coding	Yes
Direct ground contact to DIN-rail/drilled hole/housing	No
Mounting type	Mounting flange
Anti-rotation protection	Yes

Plug-in connection

Contact type (pluggable connector)	Male connector/plug
Connector (connection type)	for conductor
Mismating protection	No

Material data

Note (material data)	Information on material specifications can be found here
Color	gray
Material group	I
Insulation material (main housing)	Polyamide (PA66)
Flammability class per UL94	V0
Fire load	0.681 MJ
Weight	30.4 g

Environmental requirements

Processing temperature	-35 ... +85 °C
Continuous operating temperature	-60 ... +105 °C

Commercial data

Product Group	18 (X-COM-System)
PU (SPU)	25 pcs
Packaging type	Box
Country of origin	PL
GTIN	4044918521550
Customs tariff number	85366930000

Product classification

UNSPSC	39121409
eCl@ss 10.0	27-14-11-06
eCl@ss 9.0	27-14-11-06
ETIM 9.0	EC001284
ETIM 8.0	EC001284
ECCN	NO US CLASSIFICATION



Environmental Product Compliance	
RoHS Compliance Status	Compliant, No Exemption

Approvals / Certificates

General approvals			Declarations of conformity and manufacturer's declarations		
Approval	Standard	Certificate Name	Approval	Standard	Certificate Name
CCA DEKRA Certification B.V.	EN 60947	NTR NL-7626	EU-Declaration of Confor- mity WAGO GmbH & Co. KG	-	-
CCA DEKRA Certification B.V.	EN 61984	2190419.02	Railway WAGO GmbH & Co. KG	-	Z00004428.000
CCA DEKRA Certification B.V.	IEC 61984	NL-47799/A1			
CSA CSA Group	C22.2	1101144			
KEMA/KEUR DEKRA Certification B.V.	EN 60947	2190419.01			
UL Underwriters Laboratories Inc.	UL 1977	20151210-E45171			
UR Underwriters Laboratories Inc.	UL 1059	E45172			

Approvals for marine applications

Approval	Standard	Certificate Name
DNV GL Det Norske Veritas, Ger- manischer Lloyd	-	TAE00001V2

Downloads

Environmental Product Compliance	
Compliance Search	
Environmental Product Compliance 769-610/002-000	



Documentation

Bid Text			
769-610/002-000	19.02.2019	xml 3.24 KB	
769-610/002-000	04.10.2017	doc 25.00 KB	

CAD/CAE-Data

CAD data	CAE data
2D/3D Models 769-610/002-000	EPLAN Data Portal 769-610/002-000
	WSCAD Universe 769-610/002-000
	ZUKEN Portal 769-610/002-000

1 Compatible Products

1.1 System counterpart

1.1.1 Female connector/socket



[Item No.: 769-110](#)
1-conductor female connector; CAGE CLAMP®; 4 mm²; Pin spacing 5 mm; 10-pole; coding finger; 4,00 mm²; gray

[Item No.: 769-110/021-000](#)
1-conductor female connector; CAGE CLAMP®; 4 mm²; Pin spacing 5 mm; 10-pole; coding finger; Lateral locking levers; 4,00 mm²; gray

[Item No.: 769-130](#)
2-conductor female connector; CAGE CLAMP®; 4 mm²; Pin spacing 5 mm; 10-pole; coding finger; 4,00 mm²; gray

1.2 Required Accessories

1.2.1 Installation

1.2.1.1 Mounting accessories



[Item No.: 769-499](#)
Fixing screw M2.5 x 16; and hexagon nut M2.5



1.3 Optional Accessories

1.3.1 Coding

1.3.1.1 Coding



Item No.: 769-435
Coding pin; for coding of female plugs; for carrier terminal blocks / male connectors; orange

1.3.2 Ferrule

1.3.2.1 Ferrule



Item No.: 216-201
Ferrule; Sleeve for 0.5 mm² / 20 AWG; insulated; electro-tin plated; electrolytic copper; acc. to DIN 46228, Part 4/09.90; white



Item No.: 216-101
Ferrule; Sleeve for 0.5 mm² / AWG 22; un-insulated; electro-tin plated; silver-colored



Item No.: 216-202
Ferrule; Sleeve for 0.75 mm² / 18 AWG; insulated; electro-tin plated; gray



Item No.: 216-102
Ferrule; Sleeve for 0.75 mm² / AWG 20; un-insulated; electro-tin plated; silver-colored



Item No.: 216-203
Ferrule; Sleeve for 1 mm² / AWG 18; insulated; electro-tin plated; red



Item No.: 216-103
Ferrule; Sleeve for 1 mm² / AWG 18; un-insulated; electro-tin plated



Item No.: 216-204
Ferrule; Sleeve for 1.5 mm² / AWG 16; insulated; electro-tin plated; black



Item No.: 216-104
Ferrule; Sleeve for 1.5 mm² / AWG 16; un-insulated; electro-tin plated; silver-colored



Item No.: 216-206
Ferrule; Sleeve for 2.5 mm² / AWG 14; insulated; electro-tin plated; blue

1.3.3 Insulation stop

1.3.3.1 Insulation stop



Item No.: 769-470
Insulation stop; 0.08 - 0.2 mm² "s" (0.14 mm² "f-st"); 5 pieces/strip; white



Item No.: 769-471
Insulation stop; 0.25 - 0.5 mm²; 5 pieces/strip; light gray



Item No.: 769-472
Insulation stop; 0.75 - 1 mm²; 5 pieces/strip; dark gray

1.3.4 Marking

1.3.4.1 Marker



Item No.: 248-501
Mini-WSB marking card; as card; not stretchable; plain; snap-on type; white



1.3.4.2 Marking strip



Item No.: 210-833
Marking strips; 25 m on roll; 6 mm wide; plain; Self-adhesive; white



Item No.: 210-831
Marking strips; on reel; 2.3 mm wide; plain; Self-adhesive; white



Item No.: 210-832
Marking strips; on reel; 3 mm wide; plain; Self-adhesive; white



Item No.: 210-834
Marking strips; on reel; 5 mm wide; plain; Self-adhesive; white

1.3.5 Protective warning marker

1.3.5.1 Cover



Item No.: 280-415
Protective warning marker; for 5 terminal blocks; with high-voltage symbol, black; yellow

1.3.6 Strain relief

1.3.6.1 Strain relief



Item No.: 769-414
Strain relief plate; for female and male connectors; 1 part; Pin spacing 5 mm; 10- to 15-pole; gray

1.3.7 Tool

1.3.7.1 Operating tool



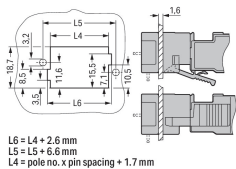
Item No.: 210-490
Operating tool



Item No.: 769-434
Operating tool; made of insulating material; 1-way; loose; white

Installation Notes

Installation



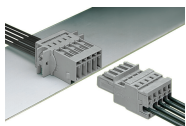
Cutout
Headers with solder pins and mounting flanges

Conductor termination



Operating tool
Inserting a conductor via operating tool
(example shows a male connector).

Application



Male connector with CAGE CLAMP® and
mounting flanges
1-connector female plug, straight

Marking



Labeling a male connector with CAGE
CLAMP® connection via Mini-WSB Quick
Markers.