

Color: ■ green-yellow

Female connector, 769 Series, operating tool

Our female connector (item number 769-502/000-016) is designed for seamless electrical installations. Pluggable rail-mount terminal blocks are primarily found in switchgear units and control systems, most notably in railroad technology. These innovative systems combine the properties of rail-mount terminal blocks and connectors for a flexible and reliable wiring system. You also have the option of pre-assembling installations, which not only makes production but also installation, operation, and maintenance more efficient and cost-effective. Strip lengths must be between 8 mm and 9 mm when connecting conductors to this female connector. This product features conductor terminals and utilizes CAGE CLAMP®. Our reliable and maintenance-free CAGE CLAMP® connection makes it easy to connect all types of conductors without having to prepare the conductor. For example, you don't need to crimp ferrules. Dimensions: 5 x 45.2 x 18.3 mm (width x height x depth). This female connector is suitable for conductor cross sections ranging from 0.08 mm² to 4 mm². Up to one potential / one pole can be connected to this terminal block using one clamping point. The green-yellow housing is made of polyamide (PA66) for insulation. An operating tool is used to operate this female connector/socket. The front-entry wiring allows you to connect copper conductors.

Notes			
Safety Information		According to EN 61984, pluggable connectors without current interrupting capacity must not be mated or unmated when live or under load.	

Electrical data			
Ratings per		IEC/EN 61984	
Overvoltage category	III	III	II
Pollution degree	3	2	2
Nominal voltage	-	-	-
Rated surge voltage	-	-	-
Rated current	-	-	-

Connection data			
Clamping units	1	Connection 1	
Total number of potentials	1	Connection technology	CAGE CLAMP®
		Actuation type	Operating tool
		Connectable conductor materials	Copper
		Nominal cross-section	4 mm² / 12 AWG
		Solid conductor	0.08 ... 4 mm² / 28 ... 12 AWG
		Fine-stranded conductor	0.08 ... 4 mm² / 28 ... 12 AWG
		Strip length	8 ... 9 mm / 0.31 ... 0.35 inches
		Pole number	1
		Wiring direction	Front-entry wiring



Physical data	
Width	5 mm / 0.197 inches
Height	45.2 mm / 1.78 inches
Depth	18.3 mm / 0.72 inches
Module width	5 mm / 0.197 inches

Mechanical data	
Variable coding	Yes
Direct ground contact to DIN-rail/drilled hole/housing	No
Marking level	Side marking
Anti-rotation protection	Yes

Plug-in connection	
Contact type (pluggable connector)	Female connector/socket
Connector (connection type)	for conductor
Mismating protection	No
Plugging without loss of pin spacing	Yes

Material data	
Note (material data)	Information on material specifications can be found here
Color	green-yellow
Insulation material (main housing)	Polyamide (PA66)
Flammability class per UL94	V0
Fire load	0.057 MJ
Halogen-free	Yes
Weight	3.3 g

Environmental requirements	
Processing temperature	-35 ... +85 °C
Continuous operating temperature	-60 ... +105 °C

Commercial data	
Product Group	18 (X-COM-System)
PU (SPU)	250 pcs
Packaging type	Bag
Country of origin	DE
GTIN	4017332591423
Customs tariff number	85366990990

Product classification	
UNSPSC	39121409
ETIM 9.0	EC001284
ETIM 8.0	EC001284
ECCN	NO US CLASSIFICATION



Environmental Product Compliance	
RoHS Compliance Status	Compliant, No Exemption

Approvals / Certificates

General approvals			Declarations of conformity and manufacturer's declarations		
Approval	Standard	Certificate Name	Approval	Standard	Certificate Name
CCA DEKRA Certification B.V.	EN 60947	NTR NL-7626	EU-Declaration of Confor- mity WAGO GmbH & Co. KG	-	-
CCA DEKRA Certification B.V.	EN 61984	2190419.02	Railway WAGO GmbH & Co. KG	-	Z00004428.000
CCA DEKRA Certification B.V.	EN 61984	NL-47799/A1			
CSA CSA Group	C22.2	1101144			
KEMA/KEUR DEKRA Certification B.V.	EN 60947	2190419.01			
UL Underwriters Laboratories Inc.	UL 1977	E 45171			
UR Underwriters Laboratories Inc.	UL 1059	E45172			

Downloads	
Environmental Product Compliance	
Compliance Search	
Environmental Product Compliance 769-502/000-016	

Documentation			
Bid Text			
769-502/000-016	19.02.2019	xml 3.08 KB	
769-502/000-016	04.10.2017	doc 25.50 KB	



CAD/CAE-Data	
<div>CAD data</div> <div>2D/3D Models 769-502/000-016</div> <div>↓</div>	<div>CAE data</div> <div>EPLAN Data Portal 769-502/000-016</div> <div>↓</div>
	<div>WSCAD Universe 769-502/000-016</div> <div>↓</div>
	<div>ZUKEN Portal 769-502/000-016</div> <div>↓</div>

1 Compatible Products
1.1 Optional Accessories
1.1.1 Cover
1.1.1.1 Cover



[Item No.: 769-436](#)
Jumper cover; for 1-conductor female
plugs; for 5 poles; gray

1.1.2 Ferrule			
1.1.2.1 Ferrule			
Item No.: 216-301 Ferrule; Sleeve for 0.25 mm² / AWG 24; in- sulated; electro-tin plated; yellow	Item No.: 216-302 Ferrule; Sleeve for 0.34 mm² / 22 AWG; in- sulated; electro-tin plated; light turquoise	Item No.: 216-201 Ferrule; Sleeve for 0.5 mm² / 20 AWG; in- sulated; electro-tin plated; electrolytic copper; acc. to DIN 46228, Part 4/09.90; white	Item No.: 216-101 Ferrule; Sleeve for 0.5 mm² / AWG 22; un- insulated; electro-tin plated; silver-colo- red
Item No.: 216-202 Ferrule; Sleeve for 0.75 mm² / 18 AWG; in- sulated; electro-tin plated; gray	Item No.: 216-102 Ferrule; Sleeve for 0.75 mm² / AWG 20; uninsulated; electro-tin plated; silver-colo- red	Item No.: 216-203 Ferrule; Sleeve for 1 mm² / AWG 18; in- sulated; electro-tin plated; red	Item No.: 216-103 Ferrule; Sleeve for 1 mm² / AWG 18; unin- sulated; electro-tin plated
Item No.: 216-204 Ferrule; Sleeve for 1.5 mm² / AWG 16; in- sulated; electro-tin plated; black	Item No.: 216-104 Ferrule; Sleeve for 1.5 mm² / AWG 16; un- insulated; electro-tin plated; silver-colo- red	Item No.: 216-206 Ferrule; Sleeve for 2.5 mm² / AWG 14; in- sulated; electro-tin plated; blue	

1.1.3 Insulation stop		
1.1.3.1 Insulation stop		
Item No.: 769-470 Insulation stop; 0.08 - 0.2 mm² "s" (0.14 mm² "f-st"); 5 pieces/strip; white	Item No.: 769-471 Insulation stop; 0.25 - 0.5 mm²; 5 pieces/ strip; light gray	Item No.: 769-472 Insulation stop; 0.75 - 1 mm²; 5 pieces/ strip; dark gray



1.1.4 Jumper

1.1.4.1 Jumper



Item No.: 769-402
Jumper; insulated; gray

1.1.5 Locking system

1.1.5.1 Locking system



Item No.: 769-428
Locking lever; for female connectors; 1 part; Pin spacing 5 mm; 1-pole; gray



Item No.: 769-429
Locking lever; for female connectors; 1 part; Pin spacing 5 mm; 1-pole; orange



Item No.: 769-430
Locking lever; for female connectors; 1 part; Pin spacing 5 mm; 2-pole; gray



Item No.: 769-431
Locking lever; for female connectors; 1 part; Pin spacing 5 mm; 2-pole; orange

1.1.6 Marking

1.1.6.1 Label



Item No.: 210-805
Labels; for Smart Printer; permanent adhesive; 6 x 15 mm; 3000 pieces on roll; white



Item No.: 210-805/000-002
Labels; for Smart Printer; permanent adhesive; 6 x 15 mm; 3000 pieces on roll; yellow

1.1.6.2 Marker



Item No.: 2009-145
Mini-WSB Inline; for Smart Printer; 1700 pieces on roll; stretchable 5 - 5.2 mm; plain; snap-on type; white



Item No.: 248-501
Mini-WSB marking card; as card; not stretchable; plain; snap-on type; white

1.1.6.3 Marking strip



Item No.: 210-831
Marking strips; on reel; 2.3 mm wide; plain; Self-adhesive; white



Item No.: 210-832
Marking strips; on reel; 3 mm wide; plain; Self-adhesive; white

1.1.7 Protective warning marker

1.1.7.1 Cover



Item No.: 280-415
Protective warning marker; for 5 terminal blocks; with high-voltage symbol, black; yellow

1.1.8 Strain relief

1.1.8.1 Strain relief



Item No.: 769-1610
Strain relief housing; for female and male connectors; 2 parts; Pin spacing 5 mm; 10-pole; gray



Item No.: 769-1611
Strain relief housing; for female and male connectors; 2 parts; Pin spacing 5 mm; 11-pole; gray



Item No.: 769-1612
Strain relief housing; for female and male connectors; 2 parts; Pin spacing 5 mm; 12-pole; gray



Item No.: 769-1613
Strain relief housing; for female and male connectors; 2 parts; Pin spacing 5 mm; 13-pole; gray



Item No.: 769-1614
Strain relief housing; for female and male connectors; 2 parts; Pin spacing 5 mm; 14-pole; gray



Item No.: 769-1615
Strain relief housing; for female and male connectors; 2 parts; Pin spacing 5 mm; 15-pole; gray



Item No.: 769-1602
Strain relief housing; for female and male connectors; 2 parts; Pin spacing 5 mm; 2-pole; gray



Item No.: 769-1603
Strain relief housing; for female and male connectors; 2 parts; Pin spacing 5 mm; 3-pole; gray



Item No.: 769-1604
Strain relief housing; for female and male connectors; 2 parts; Pin spacing 5 mm; 4-pole; gray



Item No.: 769-1605
Strain relief housing; for female and male connectors; 2 parts; Pin spacing 5 mm; 5-pole; gray



Item No.: 769-1606
Strain relief housing; for female and male connectors; 2 parts; Pin spacing 5 mm; 6-pole; gray



Item No.: 769-1607
Strain relief housing; for female and male connectors; 2 parts; Pin spacing 5 mm; 7-pole; gray



Item No.: 769-1608
Strain relief housing; for female and male connectors; 2 parts; Pin spacing 5 mm; 8-pole; gray



Item No.: 769-1609
Strain relief housing; for female and male connectors; 2 parts; Pin spacing 5 mm; 9-pole; gray



Item No.: 769-414
Strain relief plate; for female and male connectors; 1 part; Pin spacing 5 mm; 10-to 15-pole; gray



Item No.: 769-410
Strain relief plate; for female and male connectors; 1 part; Pin spacing 5 mm; 1-pole; gray



Item No.: 769-411
Strain relief plate; for female and male connectors; 1 part; Pin spacing 5 mm; 2-to 3-pole; gray



Item No.: 769-412
Strain relief plate; for female and male connectors; 1 part; Pin spacing 5 mm; 4-to 5-pole; gray



Item No.: 769-413
Strain relief plate; for female and male connectors; 1 part; Pin spacing 5 mm; 6-to 9-pole; gray

1.1.9 Test and measurement

1.1.9.1 Testing accessories



Item No.: 210-136
Test plug; 2 mm Ø; with 500 mm cable; red

1.1.10 Tool

1.1.10.1 Operating tool



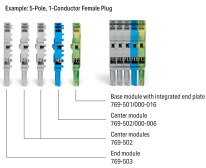
Item No.: 210-490
Operating tool



Item No.: 769-434
Operating tool; made of insulating material; 1-way; loose; white

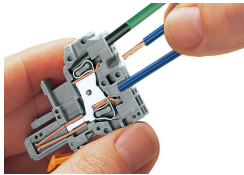
Installation Notes

Installation



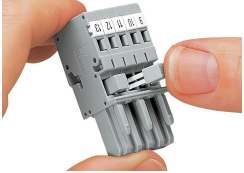
Female plugs for self-assembly

Conductor termination

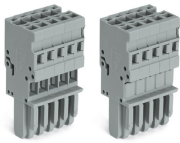


CAGE CLAMP® connection
Female plug: Inserting/removing a conductor via operating tool.
Operation 90° to conductor is also possible.
With ferruled conductors, it is necessary to use a terminal block one size smaller than the conductor's nominal cross-section.

Commoning



Commoning 1-conductor female plugs via miniature adjacent jumpers.



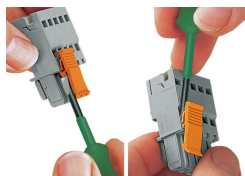
Jumper cover for 1-conductor female plugs

Coding



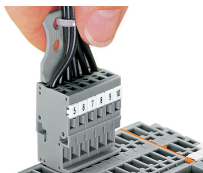
Coding a female plug by removing coding finger(s) via cutting tool. Do not remove the first and last coding fingers or use an additional locking lever.

Locking system



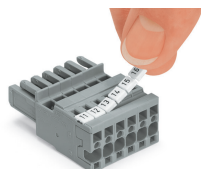
Locking/releasing a lever.

Strain relief



Removing a female plug via conductor bundle provided with strain relief plate.

Marking



Labeling a female plug with CAGE CLAMP® connection via Mini-WSB Quick Markers.