

Color: ■ blue

Female connector, 769 Series, CAGE CLAMP®

Our female connector (item number 769-502/000-006) simplifies electrical installations. Pluggable rail-mount terminal blocks are mainly used in switchgear units and control systems (e.g., in railroad technology). They are essentially a combination of rail-mount terminal blocks and pluggable connectors. You can also pre-assemble installations thanks to the variable wiring system. This saves both time and money during manufacture, installation, operation, and maintenance. Our pluggable rail-mount terminal block is rated for 500 V and is designed for use with a rated current of up to 32 A. Strip lengths must be between 8 mm and 9 mm when connecting conductors to this female connector. This product features conductor terminals and utilizes CAGE CLAMP®. Our reliable and maintenance-free CAGE CLAMP® connection makes it easy to connect all conductor types without having to prepare the conductor. For example, you don't need to crimp ferrules. Dimensions: 5 x 45.2 x 18.3 mm (width x height x depth). Depending on the conductor type, this female connector is ideal for conductor cross sections ranging from 0.08 mm² to 4 mm². Up to one potential / one pole can be connected to this terminal block using one clamping point. The blue housing is made of polyamide (PA66) for insulation. An operating tool is used to operate this female connector/socket. Conductors made of copper can be connected via front-entry wiring.

Notes		
Safety Information	According to EN 61984, pluggable connectors without current interrupting capacity must not be mated or unmated when live or under load.	

Electrical data			
Ratings per		IEC/EN 61984	
Overvoltage category	III	III	II
Pollution degree	3	2	2
Nominal voltage	500 V	-	-
Rated surge voltage	6 kV	-	-
Rated current	32 A	-	-

Connection data																				
Clamping units	1	<div>Connection 1</div> <table><tr><td>Connection technology</td><td>CAGE CLAMP®</td></tr><tr><td>Actuation type</td><td>Operating tool</td></tr><tr><td>Connectable conductor materials</td><td>Copper</td></tr><tr><td>Nominal cross-section</td><td>4 mm² / 12 AWG</td></tr><tr><td>Solid conductor</td><td>0.08 ... 4 mm² / 28 ... 12 AWG</td></tr><tr><td>Fine-stranded conductor</td><td>0.08 ... 4 mm² / 28 ... 12 AWG</td></tr><tr><td>Strip length</td><td>8 ... 9 mm / 0.31 ... 0.35 inches</td></tr><tr><td>Pole number</td><td>1</td></tr><tr><td>Wiring direction</td><td>Front-entry wiring</td></tr></table>	Connection technology	CAGE CLAMP®	Actuation type	Operating tool	Connectable conductor materials	Copper	Nominal cross-section	4 mm² / 12 AWG	Solid conductor	0.08 ... 4 mm² / 28 ... 12 AWG	Fine-stranded conductor	0.08 ... 4 mm² / 28 ... 12 AWG	Strip length	8 ... 9 mm / 0.31 ... 0.35 inches	Pole number	1	Wiring direction	Front-entry wiring
Connection technology	CAGE CLAMP®																			
Actuation type	Operating tool																			
Connectable conductor materials	Copper																			
Nominal cross-section	4 mm² / 12 AWG																			
Solid conductor	0.08 ... 4 mm² / 28 ... 12 AWG																			
Fine-stranded conductor	0.08 ... 4 mm² / 28 ... 12 AWG																			
Strip length	8 ... 9 mm / 0.31 ... 0.35 inches																			
Pole number	1																			
Wiring direction	Front-entry wiring																			
Total number of potentials	1																			

## Physical data

Width	5 mm / 0.197 inches
Height	45.2 mm / 1.78 inches
Depth	18.3 mm / 0.72 inches
Module width	5 mm / 0.197 inches

## Mechanical data

Variable coding	Yes
Direct ground contact to DIN-rail/drilled hole/housing	No
Marking level	Side marking
Anti-rotation protection	Yes

## Plug-in connection

Contact type (pluggable connector)	Female connector/socket
Connector (connection type)	for conductor
Mismating protection	No
Plugging without loss of pin spacing	Yes

## Material data

Note (material data)	<a href="#">Information on material specifications can be found here</a>
Color	blue
Insulation material (main housing)	Polyamide (PA66)
Flammability class per UL94	V0
Fire load	0.066 MJ
Halogen-free	Yes
Weight	3.3 g

## Environmental requirements

Processing temperature	-35 ... +85 °C
Continuous operating temperature	-60 ... +105 °C

## Commercial data

PU (SPU)	250 pcs
Packaging type	Bag
Country of origin	DE
GTIN	4045454217358
Customs tariff number	85366990990

## Product classification

UNSPSC	39121409
eCl@ss 10.0	27-14-11-06
eCl@ss 9.0	27-14-11-06
ETIM 9.0	EC001284
ETIM 8.0	EC001284
ECCN	NO US CLASSIFICATION



Environmental Product Compliance	
RoHS Compliance Status	Compliant,No Exemption

Approvals / Certificates

General approvals			Declarations of conformity and manufacturer's declarations		
Approval	Standard	Certificate Name	Approval	Standard	Certificate Name
CCA DEKRA Certification B.V.	EN 60947	NTR NL-7626	EU-Declaration of Confor- mity WAGO GmbH & Co. KG	-	-
CCA DEKRA Certification B.V.	EN 61984	2190419.02	Railway WAGO GmbH & Co. KG	-	Z00004428.000
CCA DEKRA Certification B.V.	EN 61984	NL-47799/A1			
CSA CSA Group	C22.2	1101144			
KEMA/KEUR DEKRA Certification B.V.	EN 60947	2190419.01			
UL Underwriters Laboratories Inc.	UL 1977	E 45171			
UR Underwriters Laboratories Inc.	UL 1059	E45172			

Downloads

Environmental Product Compliance	
Compliance Search	
Environmental Product Compliance 769-502/000-006	

Documentation

Bid Text			
769-502/000-006	19.02.2019	xml 3.08 KB	
769-502/000-006	04.10.2017	doc 25.50 KB	

CAD/CAE-Data	
<div>CAD data</div> <div>2D/3D Models</div> <div>769-502/000-006</div> <div>↓</div>	<div>CAE data</div> <div>EPLAN Data Portal</div> <div>769-502/000-006</div> <div>↓</div>
	<div>WSCAD Universe</div> <div>769-502/000-006</div> <div>↓</div>
	<div>ZUKEN Portal</div> <div>769-502/000-006</div> <div>↓</div>

1 Compatible Products

1.1 Optional Accessories

1.1.1 Cover

1.1.1.1 Cover



[Item No.: 769-436](#)  
Jumper cover; for 1-conductor female plugs; for 5 poles; gray

1.1.2 Ferrule

1.1.2.1 Ferrule



[Item No.: 216-301](#)  
Ferrule; Sleeve for 0.25 mm² / AWG 24; insulated; electro-tin plated; yellow



[Item No.: 216-302](#)  
Ferrule; Sleeve for 0.34 mm² / 22 AWG; insulated; electro-tin plated; light turquoise



[Item No.: 216-201](#)  
Ferrule; Sleeve for 0.5 mm² / 20 AWG; insulated; electro-tin plated; electrolytic copper; acc. to DIN 46228, Part 4/09.90; white



[Item No.: 216-101](#)  
Ferrule; Sleeve for 0.5 mm² / AWG 22; un-insulated; electro-tin plated; silver-colored



[Item No.: 216-202](#)  
Ferrule; Sleeve for 0.75 mm² / 18 AWG; insulated; electro-tin plated; gray



[Item No.: 216-102](#)  
Ferrule; Sleeve for 0.75 mm² / AWG 20; un-insulated; electro-tin plated; silver-colored



[Item No.: 216-203](#)  
Ferrule; Sleeve for 1 mm² / AWG 18; insulated; electro-tin plated; red



[Item No.: 216-103](#)  
Ferrule; Sleeve for 1 mm² / AWG 18; un-insulated; electro-tin plated



[Item No.: 216-204](#)  
Ferrule; Sleeve for 1.5 mm² / AWG 16; insulated; electro-tin plated; black



[Item No.: 216-104](#)  
Ferrule; Sleeve for 1.5 mm² / AWG 16; un-insulated; electro-tin plated; silver-colored



[Item No.: 216-206](#)  
Ferrule; Sleeve for 2.5 mm² / AWG 14; insulated; electro-tin plated; blue

1.1.3 Insulation stop

1.1.3.1 Insulation stop



[Item No.: 769-470](#)  
Insulation stop; 0.08 - 0.2 mm² "s" (0.14 mm² "f-st"); 5 pieces/strip; white



[Item No.: 769-471](#)  
Insulation stop; 0.25 - 0.5 mm²; 5 pieces/strip; light gray



[Item No.: 769-472](#)  
Insulation stop; 0.75 - 1 mm²; 5 pieces/strip; dark gray



1.1.4 Jumper

1.1.4.1 Jumper



**Item No.: 769-402**  
Jumper; insulated; gray

1.1.5 Locking system

1.1.5.1 Locking system



**Item No.: 769-428**  
Locking lever; for female connectors; 1 part; Pin spacing 5 mm; 1-pole; gray



**Item No.: 769-429**  
Locking lever; for female connectors; 1 part; Pin spacing 5 mm; 1-pole; orange



**Item No.: 769-430**  
Locking lever; for female connectors; 1 part; Pin spacing 5 mm; 2-pole; gray



**Item No.: 769-431**  
Locking lever; for female connectors; 1 part; Pin spacing 5 mm; 2-pole; orange

1.1.6 Marking

1.1.6.1 Label



**Item No.: 210-805**  
Labels; for Smart Printer; permanent adhesive; 6 x 15 mm; 3000 pieces on roll; white



**Item No.: 210-805/000-002**  
Labels; for Smart Printer; permanent adhesive; 6 x 15 mm; 3000 pieces on roll; yellow

1.1.6.2 Marker



**Item No.: 2009-145**  
Mini-WSB Inline; for Smart Printer; 1700 pieces on roll; stretchable 5 - 5.2 mm; plain; snap-on type; white



**Item No.: 248-501**  
Mini-WSB marking card; as card; not stretchable; plain; snap-on type; white

1.1.6.3 Marking strip



**Item No.: 210-831**  
Marking strips; on reel; 2.3 mm wide; plain; Self-adhesive; white



**Item No.: 210-832**  
Marking strips; on reel; 3 mm wide; plain; Self-adhesive; white

1.1.7 Protective warning marker

1.1.7.1 Cover



**Item No.: 280-415**  
Protective warning marker; for 5 terminal blocks; with high-voltage symbol, black; yellow



1.1.8 Strain relief

1.1.8.1 Strain relief



**Item No.: 769-1610**  
Strain relief housing; for female and male connectors; 2 parts; Pin spacing 5 mm; 10-pole; gray



**Item No.: 769-1611**  
Strain relief housing; for female and male connectors; 2 parts; Pin spacing 5 mm; 11-pole; gray



**Item No.: 769-1612**  
Strain relief housing; for female and male connectors; 2 parts; Pin spacing 5 mm; 12-pole; gray



**Item No.: 769-1613**  
Strain relief housing; for female and male connectors; 2 parts; Pin spacing 5 mm; 13-pole; gray



**Item No.: 769-1614**  
Strain relief housing; for female and male connectors; 2 parts; Pin spacing 5 mm; 14-pole; gray



**Item No.: 769-1615**  
Strain relief housing; for female and male connectors; 2 parts; Pin spacing 5 mm; 15-pole; gray



**Item No.: 769-1602**  
Strain relief housing; for female and male connectors; 2 parts; Pin spacing 5 mm; 2-pole; gray



**Item No.: 769-1603**  
Strain relief housing; for female and male connectors; 2 parts; Pin spacing 5 mm; 3-pole; gray



**Item No.: 769-1604**  
Strain relief housing; for female and male connectors; 2 parts; Pin spacing 5 mm; 4-pole; gray



**Item No.: 769-1605**  
Strain relief housing; for female and male connectors; 2 parts; Pin spacing 5 mm; 5-pole; gray



**Item No.: 769-1606**  
Strain relief housing; for female and male connectors; 2 parts; Pin spacing 5 mm; 6-pole; gray



**Item No.: 769-1607**  
Strain relief housing; for female and male connectors; 2 parts; Pin spacing 5 mm; 7-pole; gray



**Item No.: 769-1608**  
Strain relief housing; for female and male connectors; 2 parts; Pin spacing 5 mm; 8-pole; gray



**Item No.: 769-1609**  
Strain relief housing; for female and male connectors; 2 parts; Pin spacing 5 mm; 9-pole; gray



**Item No.: 769-414**  
Strain relief plate; for female and male connectors; 1 part; Pin spacing 5 mm; 10-to 15-pole; gray



**Item No.: 769-410**  
Strain relief plate; for female and male connectors; 1 part; Pin spacing 5 mm; 1-pole; gray



**Item No.: 769-411**  
Strain relief plate; for female and male connectors; 1 part; Pin spacing 5 mm; 2-to 3-pole; gray



**Item No.: 769-412**  
Strain relief plate; for female and male connectors; 1 part; Pin spacing 5 mm; 4-to 5-pole; gray



**Item No.: 769-413**  
Strain relief plate; for female and male connectors; 1 part; Pin spacing 5 mm; 6-to 9-pole; gray

1.1.9 Test and measurement

1.1.9.1 Testing accessories



**Item No.: 210-136**  
Test plug; 2 mm Ø; with 500 mm cable; red

1.1.10 Tool

1.1.10.1 Operating tool



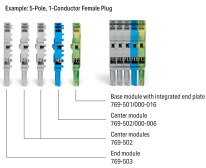
**Item No.: 210-490**  
Operating tool



**Item No.: 769-434**  
Operating tool; made of insulating material; 1-way; loose; white

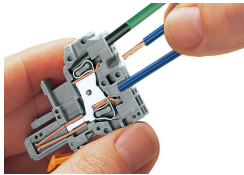
Installation Notes

Installation



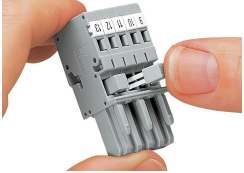
Female plugs for self-assembly

Conductor termination

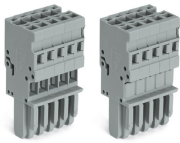


**CAGE CLAMP® connection**  
Female plug: Inserting/removing a conductor via operating tool.  
Operation 90° to conductor is also possible.  
With ferruled conductors, it is necessary to use a terminal block one size smaller than the conductor's nominal cross-section.

Commoning



Commoning 1-conductor female plugs via miniature adjacent jumpers.



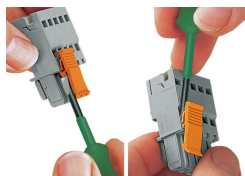
Jumper cover for 1-conductor female plugs

Coding



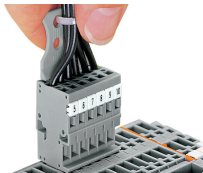
Coding a female plug by removing coding finger(s) via cutting tool. Do not remove the first and last coding fingers or use an additional locking lever.

## Locking system



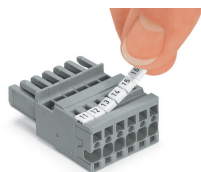
Locking/releasing a lever.

## Strain relief



Removing a female plug via conductor bundle provided with strain relief plate.

## Marking



Labeling a female plug with CAGE CLAMP® connection via Mini-WSB Quick Markers.