

Color: ■ gray

Female connector, 769 Series, CAGE CLAMP®

Our female connector (item number 769-110/021-000) ensures effortless electrical installations. Pluggable rail-mount terminal blocks are mainly used in switchgear units and control systems (e.g., in railroad technology). They are essentially a combination of rail-mount terminal blocks and pluggable connectors. You can also pre-assemble installations thanks to the variable wiring system. This saves both time and money during manufacture, installation, operation, and maintenance. This pluggable rail-mount terminal block has a rated voltage of 500 V and can handle currents up to 32 A. Conductors should only be connected to this female connector if their strip length is between 8 mm and 9 mm. This product features conductor terminals and utilizes CAGE CLAMP®. Our reliable and maintenance-free CAGE CLAMP® connection makes it easy to connect all conductor types without having to prepare the conductor. For example, you don't need to crimp ferrules. The dimensions are 65 x 45.2 x 18.3 mm (width x height x depth). This female connector is suitable for conductor cross sections ranging from 0.08 mm² to 4 mm². You can connect ten potentials / ten poles using the ten clamping points. The gray housing is made of polyamide (PA66) for insulation. This female connector/socket is operated with an operating tool. The front-entry wiring allows you to connect copper conductors.

Notes			
Safety Information		According to EN 61984, pluggable connectors without current interrupting capacity must not be mated or unmated when live or under load.	

Electrical data

Ratings per	IEC/EN 61984		
Overvoltage category	III	III	II
Pollution degree	3	2	2
Nominal voltage	500 V	-	-
Rated surge voltage	6 kV	-	-
Rated current	32 A	-	-

Connection data

Clamping units	10	Connection 1	
Total number of potentials	10	Connection technology	CAGE CLAMP®
		Actuation type	Operating tool
		Connectable conductor materials	Copper
		Nominal cross-section	4 mm² / 12 AWG
		Solid conductor	0.08 ... 4 mm² / 28 ... 12 AWG
		Fine-stranded conductor	0.08 ... 4 mm² / 28 ... 12 AWG
		Strip length	8 ... 9 mm / 0.31 ... 0.35 inches
		Pole number	10
		Wiring direction	Front-entry wiring

**Physical data**

Width	65 mm / 2.583 inches
Height	45.2 mm / 1.78 inches
Depth	18.3 mm / 0.72 inches
Module width	5 mm / 0.197 inches

**Mechanical data**

Variable coding	Yes
Direct ground contact to DIN-rail/drilled hole/housing	No
Marking level	Side marking
Anti-rotation protection	Yes

**Plug-in connection**

Contact type (pluggable connector)	Female connector/socket
Connector (connection type)	for conductor
Mismating protection	No
Plugging without loss of pin spacing	Yes
Locking lever	Yes

**Material data**

Note (material data)	<a href="#">Information on material specifications can be found here</a>
Color	gray
Material group	I
Insulation material (main housing)	Polyamide (PA66)
Flammability class per UL94	V0
Fire load	0.625 MJ
Halogen-free	Yes
Weight	33.2 g

**Environmental requirements**

Processing temperature	-35 ... +85 °C
Continuous operating temperature	-60 ... +105 °C

**Commercial data**

Product Group	18 (X-COM-System)
PU (SPU)	10 pcs
Packaging type	Box
Country of origin	DE
GTIN	4044918471824
Customs tariff number	85366990990



Product classification		
UNSPSC		39121409
eCl@ss 10.0		27-14-11-06
eCl@ss 9.0		27-14-11-06
ETIM 9.0		EC001284
ETIM 8.0		EC001284
ECCN		NO US CLASSIFICATION

Environmental Product Compliance		
RoHS Compliance Status		Compliant, No Exemption

Approvals / Certificates

General approvals			Declarations of conformity and manufacturer's declarations		
Approval	Standard	Certificate Name	Approval	Standard	Certificate Name
CCA DEKRA Certification B.V.	EN 60947	NTR NL-7626	EU-Declaration of Confor- mity WAGO GmbH & Co. KG	-	-
CCA DEKRA Certification B.V.	EN 61984	2190419.02	Railway WAGO GmbH & Co. KG	-	Z00004428.000
CCA DEKRA Certification B.V.	IEC 61984	NL-47799/A1			
CSA CSA Group	C22.2	1101144			
KEMA/KEUR DEKRA Certification B.V.	EN 60947	2190419.01			
UL Underwriters Laboratories Inc.	UL 1977	E 45171			
UR Underwriters Laboratories Inc.	UL 1059	E45172			

Approvals for marine applications

Approval	Standard	Certificate Name
ABS American Bureau of Ship- ping	EN 60947	20-HG1941090-PDA
DNV GL Det Norske Veritas, Ger- manischer Lloyd	-	TAE00001V2



Downloads

Environmental Product Compliance

Compliance Search

Environmental Product Compliance  
769-110/021-000

↓

Documentation

Bid Text			
769-110/021-000	19.02.2019	xml 3.21 KB	↓
769-110/021-000	04.10.2017	doc 25.00 KB	↓

CAD/CAE-Data

CAD data	CAE data
2D/3D Models 769-110/021-000	EPLAN Data Portal 769-110/021-000
↓	↓
	WSCAD Universe 769-110/021-000
	↓
	ZUKEN Portal 769-110/021-000
	↓

1 Compatible Products

1.1 Optional Accessories

1.1.1 Cover

1.1.1.1 Cover



[Item No.: 769-436](#)  
Jumper cover; for 1-conductor female  
plugs; for 5 poles; gray

1.1.2 Ferrule			
1.1.2.1 Ferrule			
<a href="#">Item No.: 216-301</a> Ferrule; Sleeve for 0.25 mm² / AWG 24; in- sulated; electro-tin plated; yellow	<a href="#">Item No.: 216-302</a> Ferrule; Sleeve for 0.34 mm² / 22 AWG; in- sulated; electro-tin plated; light turquoise	<a href="#">Item No.: 216-201</a> Ferrule; Sleeve for 0.5 mm² / 20 AWG; in- sulated; electro-tin plated; electrolytic copper; acc. to DIN 46228, Part 4/09.90; white	<a href="#">Item No.: 216-101</a> Ferrule; Sleeve for 0.5 mm² / AWG 22; un- insulated; electro-tin plated; silver-colo- red
<a href="#">Item No.: 216-202</a> Ferrule; Sleeve for 0.75 mm² / 18 AWG; in- sulated; electro-tin plated; gray	<a href="#">Item No.: 216-102</a> Ferrule; Sleeve for 0.75 mm² / AWG 20; uninsulated; electro-tin plated; silver-co- lored	<a href="#">Item No.: 216-203</a> Ferrule; Sleeve for 1 mm² / AWG 18; insu- lated; electro-tin plated; red	<a href="#">Item No.: 216-103</a> Ferrule; Sleeve for 1 mm² / AWG 18; unin- sulated; electro-tin plated



1.1.2.1 Ferrule



**Item No.: 216-204**  
Ferrule; Sleeve for 1.5 mm² / AWG 16; in-  
sulated; electro-tin plated; black



**Item No.: 216-104**  
Ferrule; Sleeve for 1.5 mm² / AWG 16; un-  
insulated; electro-tin plated; silver-colored



**Item No.: 216-206**  
Ferrule; Sleeve for 2.5 mm² / AWG 14; in-  
sulated; electro-tin plated; blue

1.1.3 Insulation stop

1.1.3.1 Insulation stop



**Item No.: 769-470**  
Insulation stop; 0.08 - 0.2 mm² "s" (0.14  
mm² "f-st"); 5 pieces/strip; white



**Item No.: 769-471**  
Insulation stop; 0.25 - 0.5 mm²; 5 pieces/  
strip; light gray



**Item No.: 769-472**  
Insulation stop; 0.75 - 1 mm²; 5 pieces/  
strip; dark gray

1.1.4 Jumper

1.1.4.1 Jumper



**Item No.: 769-402**  
Jumper; insulated; gray

1.1.5 Locking system

1.1.5.1 Locking system



**Item No.: 769-430**  
Locking lever; for female connectors; 1  
part; Pin spacing 5 mm; 2-pole; gray



**Item No.: 769-431**  
Locking lever; for female connectors; 1  
part; Pin spacing 5 mm; 2-pole; orange

1.1.6 Marking

1.1.6.1 Label



**Item No.: 210-805**  
Labels; for Smart Printer; permanent ad-  
hesive; 6 x 15 mm; 3000 pieces on roll;  
white



**Item No.: 210-805/000-002**  
Labels; for Smart Printer; permanent ad-  
hesive; 6 x 15 mm; 3000 pieces on roll;  
yellow

1.1.6.2 Marker



**Item No.: 2009-145**  
Mini-WSB Inline; for Smart Printer; 1700  
pieces on roll; stretchable 5 - 5.2 mm;  
plain; snap-on type; white



**Item No.: 248-501**  
Mini-WSB marking card; as card; not stret-  
chable; plain; snap-on type; white

1.1.6.3 Marking strip



**Item No.: 210-831**  
Marking strips; on reel; 2.3 mm wide; plain;  
Self-adhesive; white



**Item No.: 210-832**  
Marking strips; on reel; 3 mm wide; plain;  
Self-adhesive; white



**Item No.: 210-834**  
Marking strips; on reel; 5 mm wide; plain;  
Self-adhesive; white

1.1.7 Protective warning marker

1.1.7.1 Cover



**Item No.: 280-415**  
Protective warning marker; for 5 terminal  
blocks; with high-voltage symbol, black;  
yellow

1.1.8 Strain relief

1.1.8.1 Strain relief



**Item No.: 769-1610**  
Strain relief housing; for female and male  
connectors; 2 parts; Pin spacing 5 mm;  
10-pole; gray



**Item No.: 769-414**  
Strain relief plate; for female and male  
connectors; 1 part; Pin spacing 5 mm; 10-  
to 15-pole; gray

1.1.9 Test and measurement

1.1.9.1 Testing accessories



**Item No.: 210-136**  
Test plug; 2 mm Ø; with 500 mm cable; red

1.1.10 Tool

1.1.10.1 Operating tool



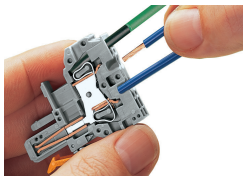
**Item No.: 210-490**  
Operating tool



**Item No.: 769-434**  
Operating tool; made of insulating materi-  
al; 1-way; loose; white

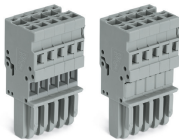
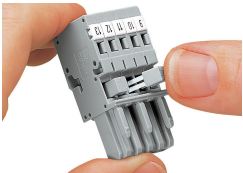
Installation Notes

Conductor termination



**CAGE CLAMP® connection**  
Female plug: Inserting/removing a conductor via operating tool.  
Operation 90° to conductor is also possible.  
With ferruled conductors, it is necessary to use a terminal block one size smaller than the conductor's nominal cross-section.

Commoning



Commoning 1-conductor female plugs via miniature adjacent jumpers.

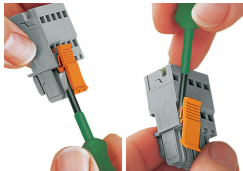
Jumper cover for 1-conductor female plugs

Coding



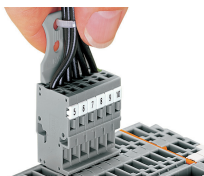
Coding a female plug by removing coding finger(s) via cutting tool. Do not remove the first and last coding fingers or use an additional locking lever.

Locking system

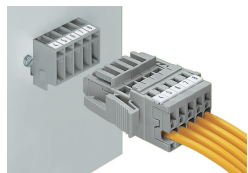


Locking/releasing a lever.

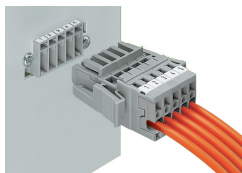
## Strain relief



Removing a female plug via conductor bundle provided with strain relief plate.

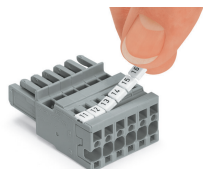


Male header with mounting flanges  
1-conductor female plug with lateral locking levers



Male header and 1-conductor female plug  
with lateral locking levers

## Marking



Labeling a female plug with CAGE CLAMP®  
connection via Mini-WSB Quick Markers.