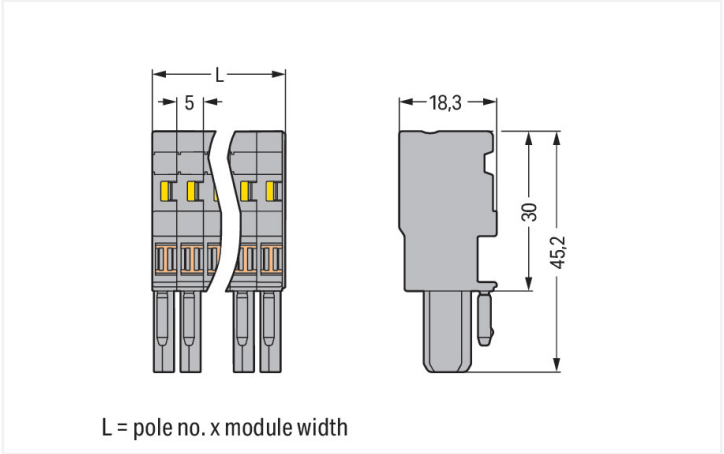


Color: ■ gray



Dimensions in mm

Female connector, 769 Series, gray

Enjoy seamless electrical installations with this female connector (item number 769-107). Pluggable rail-mount terminal blocks are mainly used in switchgear units and control systems (e.g., in railroad technology). They are essentially a combination of rail-mount terminal blocks and pluggable connectors. You can also pre-assemble installations thanks to the variable wiring system. This saves both time and money during manufacture, installation, operation, and maintenance. This pluggable rail-mount terminal block has a rated voltage of 500 V and can handle currents up to 32 A. Ensure that the strip lengths are between 8 mm and 9 mm when connecting conductors to this female connector. Featuring conductor terminals along with CAGE CLAMP®, this connector is highly versatile. Our highly-rated and maintenance-free CAGE CLAMP® connection makes it easy to connect all types of conductors without having to prepare the conductor. For example, you don't need to crimp ferrules. Dimensions: 35 x 45.2 x 18.3 mm (width x height x depth). This female connector is suitable for conductor cross sections ranging from 0.08 mm² to 4 mm². There are seven clamping points available for connecting seven different potentials / seven poles. The gray housing is made of polyamide (PA66) for insulation. An operating tool is used to operate this female connector/socket. The front-entry wiring makes it possible to connect copper conductors.

Notes		
Safety Information	According to EN 61984, pluggable connectors without current interrupting capacity must not be mated or unmated when live or under load.	

Electrical data			
Ratings per	IEC/EN 61984		
Overvoltage category	III	III	II
Pollution degree	3	2	2
Nominal voltage	500 V	-	-
Rated surge voltage	6 kV	-	-
Rated current	32 A	-	-

Connection data																				
Clamping units	7	<div>Connection 1</div> <table><tr><td>Connection technology</td><td>CAGE CLAMP®</td></tr><tr><td>Actuation type</td><td>Operating tool</td></tr><tr><td>Connectable conductor materials</td><td>Copper</td></tr><tr><td>Nominal cross-section</td><td>4 mm² / 12 AWG</td></tr><tr><td>Solid conductor</td><td>0.08 ... 4 mm² / 28 ... 12 AWG</td></tr><tr><td>Fine-stranded conductor</td><td>0.08 ... 4 mm² / 28 ... 12 AWG</td></tr><tr><td>Strip length</td><td>8 ... 9 mm / 0.31 ... 0.35 inches</td></tr><tr><td>Pole number</td><td>7</td></tr><tr><td>Wiring direction</td><td>Front-entry wiring</td></tr></table>	Connection technology	CAGE CLAMP®	Actuation type	Operating tool	Connectable conductor materials	Copper	Nominal cross-section	4 mm² / 12 AWG	Solid conductor	0.08 ... 4 mm² / 28 ... 12 AWG	Fine-stranded conductor	0.08 ... 4 mm² / 28 ... 12 AWG	Strip length	8 ... 9 mm / 0.31 ... 0.35 inches	Pole number	7	Wiring direction	Front-entry wiring
Connection technology	CAGE CLAMP®																			
Actuation type	Operating tool																			
Connectable conductor materials	Copper																			
Nominal cross-section	4 mm² / 12 AWG																			
Solid conductor	0.08 ... 4 mm² / 28 ... 12 AWG																			
Fine-stranded conductor	0.08 ... 4 mm² / 28 ... 12 AWG																			
Strip length	8 ... 9 mm / 0.31 ... 0.35 inches																			
Pole number	7																			
Wiring direction	Front-entry wiring																			
Total number of potentials	7																			

Physical data

Width	35 mm / 1.378 inches
Height	45.2 mm / 1.78 inches
Depth	18.3 mm / 0.72 inches
Module width	5 mm / 0.197 inches

Mechanical data

Variable coding	Yes
Direct ground contact to DIN-rail/drilled hole/housing	No
Marking level	Side marking
Anti-rotation protection	Yes

Plug-in connection

Contact type (pluggable connector)	Female connector/socket
Connector (connection type)	for conductor
Mismating protection	No
Plugging without loss of pin spacing	Yes

Material data

Note (material data)	Information on material specifications can be found here
Color	gray
Material group	I
Insulation material (main housing)	Polyamide (PA66)
Flammability class per UL94	V0
Fire load	0.401 MJ
Halogen-free	Yes
Weight	22 g

Environmental requirements

Processing temperature	-35 ... +85 °C
Continuous operating temperature	-60 ... +105 °C

Commercial data

PU (SPU)	25 pcs
Packaging type	Box
Country of origin	DE
GTIN	4044918471589
Customs tariff number	85366990990

Product classification

UNSPSC	39121409
eCl@ss 10.0	27-14-11-06
eCl@ss 9.0	27-14-11-06
ETIM 9.0	EC001284
ETIM 8.0	EC001284
ECCN	NO US CLASSIFICATION



Environmental Product Compliance	
RoHS Compliance Status	Compliant, No Exemption

Approvals / Certificates

General approvals			Declarations of conformity and manufacturer's declarations		
Approval	Standard	Certificate Name	Approval	Standard	Certificate Name
CCA DEKRA Certification B.V.	EN 60947	NTR NL-7626	EU-Declaration of Confor- mity WAGO GmbH & Co. KG	-	-
CCA DEKRA Certification B.V.	EN 61984	2190419.02	Railway WAGO GmbH & Co. KG	-	Z00004428.000
CCA DEKRA Certification B.V.	IEC 61984	NL-47799/A1			
CSA CSA Group	C22.2	1101144			
KEMA/KEUR DEKRA Certification B.V.	EN 60947	2190419.01			
UL Underwriters Laboratories Inc.	UL 1977	E 45171			
UR Underwriters Laboratories Inc.	UL 1059	E45172			

Approvals for marine applications

Approval	Standard	Certificate Name
ABS American Bureau of Ship- ping	EN 60947	20-HG1941090-PDA

Downloads

Environmental Product Compliance	
Compliance Search	
Environmental Product Compliance 769-107	

Documentation

Bid Text			
769-107	19.02.2019	xml 3.20 KB	
769-107	04.10.2017	doc 25.00 KB	



CAD/CAE-Data	
CAD data	CAE data
2D/3D Models 769-107	EPLAN Data Portal 769-107
	WSCAD Universe 769-107
	ZUKEN Portal 769-107

1 Compatible Products
1.1 Optional Accessories
1.1.1 Cover
1.1.1.1 Cover



[Item No.: 769-436](#)
Jumper cover; for 1-conductor female plugs; for 5 poles; gray

1.1.2 Ferrule			
1.1.2.1 Ferrule			
Item No.: 216-301 Ferrule; Sleeve for 0.25 mm² / AWG 24; insulated; electro-tin plated; yellow	Item No.: 216-302 Ferrule; Sleeve for 0.34 mm² / 22 AWG; insulated; electro-tin plated; light turquoise	Item No.: 216-201 Ferrule; Sleeve for 0.5 mm² / 20 AWG; insulated; electro-tin plated; electrolytic copper; acc. to DIN 46228, Part 4/09.90; white	Item No.: 216-101 Ferrule; Sleeve for 0.5 mm² / AWG 22; un-insulated; electro-tin plated; silver-colored
Item No.: 216-202 Ferrule; Sleeve for 0.75 mm² / 18 AWG; insulated; electro-tin plated; gray	Item No.: 216-102 Ferrule; Sleeve for 0.75 mm² / AWG 20; un-insulated; electro-tin plated; silver-colored	Item No.: 216-203 Ferrule; Sleeve for 1 mm² / AWG 18; insulated; electro-tin plated; red	Item No.: 216-103 Ferrule; Sleeve for 1 mm² / AWG 18; un-insulated; electro-tin plated
Item No.: 216-204 Ferrule; Sleeve for 1.5 mm² / AWG 16; insulated; electro-tin plated; black	Item No.: 216-104 Ferrule; Sleeve for 1.5 mm² / AWG 16; un-insulated; electro-tin plated; silver-colored	Item No.: 216-206 Ferrule; Sleeve for 2.5 mm² / AWG 14; insulated; electro-tin plated; blue	

1.1.3 Insulation stop		
1.1.3.1 Insulation stop		
Item No.: 769-470 Insulation stop; 0.08 - 0.2 mm² "s" (0.14 mm² "f-st"); 5 pieces/strip; white	Item No.: 769-471 Insulation stop; 0.25 - 0.5 mm²; 5 pieces/strip; light gray	Item No.: 769-472 Insulation stop; 0.75 - 1 mm²; 5 pieces/strip; dark gray



1.1.4 Jumper

1.1.4.1 Jumper



[Item No.: 769-402](#)
Jumper; insulated; gray

1.1.5 Locking system

1.1.5.1 Locking system



[Item No.: 769-430](#)
Locking lever; for female connectors; 1 part; Pin spacing 5 mm; 2-pole; gray



[Item No.: 769-431](#)
Locking lever; for female connectors; 1 part; Pin spacing 5 mm; 2-pole; orange

1.1.6 Marking

1.1.6.1 Label



[Item No.: 210-805](#)
Labels; for Smart Printer; permanent adhesive; 6 x 15 mm; 3000 pieces on roll; white



[Item No.: 210-805/000-002](#)
Labels; for Smart Printer; permanent adhesive; 6 x 15 mm; 3000 pieces on roll; yellow

1.1.6.2 Marker



[Item No.: 2009-145](#)
Mini-WSB Inline; for Smart Printer; 1700 pieces on roll; stretchable 5 - 5.2 mm; plain; snap-on type; white



[Item No.: 248-501](#)
Mini-WSB marking card; as card; not stretchable; plain; snap-on type; white

1.1.6.3 Marking strip



[Item No.: 210-831](#)
Marking strips; on reel; 2.3 mm wide; plain; Self-adhesive; white



[Item No.: 210-832](#)
Marking strips; on reel; 3 mm wide; plain; Self-adhesive; white



[Item No.: 210-834](#)
Marking strips; on reel; 5 mm wide; plain; Self-adhesive; white

1.1.7 Protective warning marker

1.1.7.1 Cover



[Item No.: 280-415](#)
Protective warning marker; for 5 terminal blocks; with high-voltage symbol, black; yellow

1.1.8 Strain relief

1.1.8.1 Strain relief



Item No.: 769-1607
Strain relief housing; for female and male connectors; 2 parts; Pin spacing 5 mm; 7-pole; gray



Item No.: 769-413
Strain relief plate; for female and male connectors; 1 part; Pin spacing 5 mm; 6- to 9-pole; gray

1.1.9 Test and measurement

1.1.9.1 Testing accessories



Item No.: 210-136
Test plug; 2 mm Ø; with 500 mm cable; red

1.1.10 Tool

1.1.10.1 Operating tool



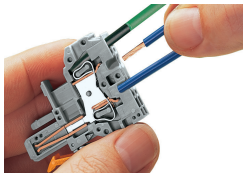
Item No.: 210-490
Operating tool



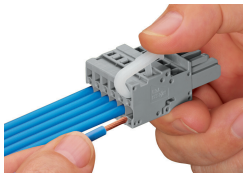
Item No.: 769-434
Operating tool; made of insulating material; 1-way; loose; white

Installation Notes

Conductor termination



CAGE CLAMP® connection
Female plug: Inserting/removing a conductor via operating tool. Operation 90° to conductor is also possible. With ferruled conductors, it is necessary to use a terminal block one size smaller than the conductor's nominal cross-section.

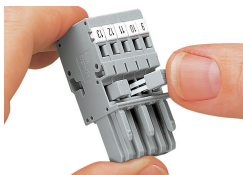


Operating lever
Inserting a conductor – side-entry wiring (example shows a female plug).

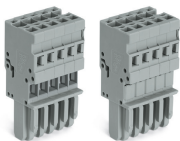


Operating tool
Inserting a conductor – side-entry wiring (example shows a female plug). With ferruled conductors, it is necessary to use a terminal block one size smaller than the conductor's nominal cross-section.

Commoning



Commoning 1-conductor female plugs via miniature adjacent jumpers.



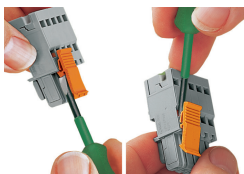
Jumper cover for 1-conductor female plugs

Coding



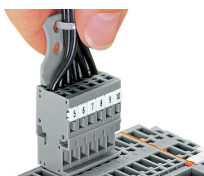
Coding a female plug by removing coding finger(s) via cutting tool. Do not remove the first and last coding fingers or use an additional locking lever.

Locking system



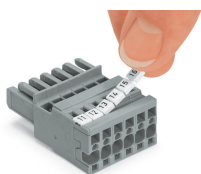
Locking/releasing a lever.

Strain relief



Removing a female plug via conductor bundle provided with strain relief plate.

Marking



Labeling a female plug with CAGE CLAMP® connection via Mini-WSB Quick Markers.