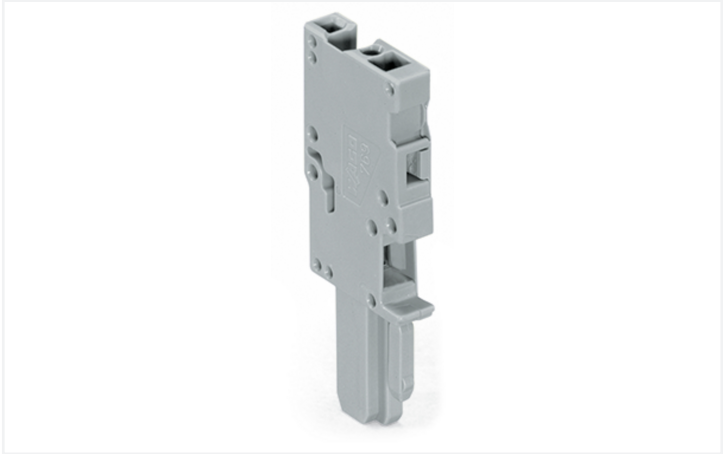


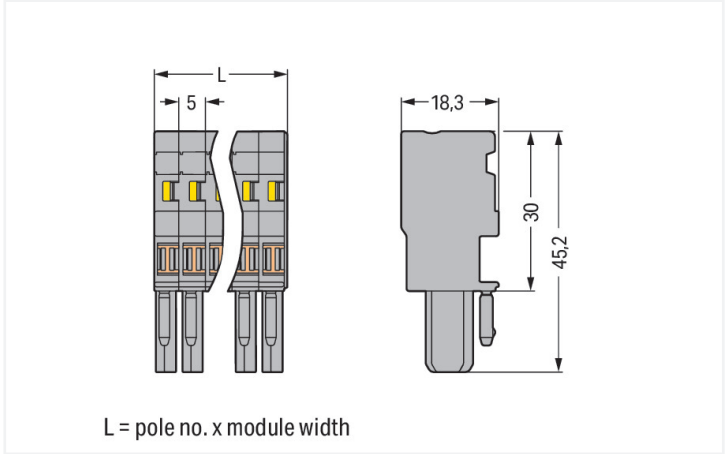
Data Sheet | Item Number: 769-101

1-conductor female connector; CAGE CLAMP®; 4 mm²; Pin spacing 5 mm; 1-pole; coding finger; 4,00 mm²; gray

<https://www.wago.com/769-101>



Color: ■ gray



Dimensions in mm

Female connector, 769 Series, CAGE CLAMP®

This female connector (item number 769-101) provides hassle-free electrical installations. Pluggable rail-mount terminal blocks are hugely popular in switchgear and control systems, for example, in railroad technology. They combine the best of rail-mount terminal blocks and connectors to create the perfect solution. Variable wiring systems make pre-assembly easy, which saves both time and money in production, installation, operation, and maintenance. Our pluggable rail-mount terminal block is rated for 500 V and is designed for use with a rated current of up to 32 A. Strip lengths must be between 8 mm and 9 mm when connecting conductors to this female connector. This product incorporates conductor terminals and utilizes CAGE CLAMP®. Our tried-and-tested universal connection known as CAGE CLAMP® is industry-leading when it comes to connection technology and electrical interconnections. The item's dimensions are 5 x 45.2 x 18.3 mm (width x height x depth). Depending on the conductor type, this female connector is suitable for conductor cross sections ranging from 0.08 mm² to 4 mm². Up to one potential / one pole can be connected to this terminal block using one clamping point. The gray housing is made of polyamide (PA66) for insulation. An operating tool is used to operate this female connector/socket. The front-entry wiring means you can connect copper conductors.

| Notes              |   |
|--------------------|---|
| Safety Information | According to EN 61984, pluggable connectors without current interrupting capacity must not be mated or unmated when live or under load. |

| Electrical data      |       |              |    |
|----------------------|-------|--------------|----|
| Ratings per          |       | IEC/EN 61984 |    |
| Overvoltage category | III   | III          | II |
| Pollution degree     | 3     | 2            | 2  |
| Nominal voltage      | 500 V | -            | -  |
| Rated surge voltage  | 6 kV  | -            | -  |
| Rated current        | 32 A  | -            | -  |

| Connection data            |   | Connection 1                    |                                   |
|----------------------------|---|---------------------------------|-----------------------------------|
| Clamping units             | 1 | Connection technology           | CAGE CLAMP®                       |
| Total number of potentials | 1 | Actuation type                  | Operating tool                    |
|                            |   | Connectable conductor materials | Copper                            |
|                            |   | Nominal cross-section           | 4 mm² / 12 AWG                    |
|                            |   | Solid conductor                 | 0.08 ... 4 mm² / 28 ... 12 AWG    |
|                            |   | Fine-stranded conductor         | 0.08 ... 4 mm² / 28 ... 12 AWG    |
|                            |   | Strip length                    | 8 ... 9 mm / 0.31 ... 0.35 inches |
|                            |   | Pole number                     | 1                                 |
|                            |   | Wiring direction                | Front-entry wiring                |



| Physical data |                       |
|---------------|-----------------------|
| Width         | 5 mm / 0.197 inches   |
| Height        | 45.2 mm / 1.78 inches |
| Depth         | 18.3 mm / 0.72 inches |
| Module width  | 5 mm / 0.197 inches   |

| Mechanical data  |              |
|--|--------------|
| Variable coding  | Yes          |
| Direct ground contact to DIN-rail/drilled hole/housing | No           |
| Marking level  | Side marking |
| Anti-rotation protection                               | Yes          |

| Plug-in connection                   |                         |
|--------------------------------------|-------------------------|
| Contact type (pluggable connector)   | Female connector/socket |
| Connector (connection type)          | for conductor           |
| Mismating protection                 | No                      |
| Plugging without loss of pin spacing | Yes                     |

| Material data                      |  |
|------------------------------------|--|
| Note (material data)               | <a href="#">Information on material specifications can be found here</a> |
| Color                              | gray   |
| Material group                     | I  |
| Insulation material (main housing) | Polyamide (PA66)   |
| Flammability class per UL94        | V0   |
| Fire load                          | 0.071 MJ   |
| Halogen-free                       | Yes  |
| Weight                             | 3.2 g  |

| Environmental requirements   |   |
|--|---|
| Processing temperature   | -35 ... +85 °C  |
| Continuous operating temperature   | -60 ... +105 °C   |
| Environmental Testing (Environmental Conditions)   |   |
| Test specification<br>Railway applications –<br>Rolling stock –<br>Electronic equipment            | DIN EN 50155 (VDE 0115-200):2022-06   |
| Test procedure<br>Railway applications –<br>Rolling stock equipment –<br>Shock and vibration tests | DIN EN 61373 (VDE 0115-0106):2011-04  |
| Spectrum/Installation location   | Service life test, Category 1, Class A/B  |
| Function test with noise-like vibration  | Test passed according to Section 8 of the standard  |
| Frequency  | f <sub>1</sub> = 5 Hz to f <sub>2</sub> = 150 Hz<br>f <sub>1</sub> = 5 Hz to f <sub>2</sub> = 150 Hz  |
| Acceleration   | 0.101g (highest test level used for all axes)<br>0.572g (highest test level used for all axes)<br>5g (highest test level used for all axes) |
| Test duration per axis   | 10 min.<br>5 h  |
| Test directions  | X, Y and Z axes<br>X, Y and Z axes<br>X, Y and Z axes   |
| Monitoring for contact faults/interruptions  | Passed  |
| Voltage drop measurement before and after each axis  | Passed  |



| Environmental Testing (Environmental Conditions)                             |   |
|--|---|
| Simulated service life test through increased levels of noise-like vibration | Test passed according to Section 9 of the standard  |
| Extended test scope: Monitoring for contact faults/interruptions             | Passed<br>Passed                                    |
| Extended test scope: Voltage drop measurement before and after each axis     | Passed<br>Passed                                    |
| Shock test   | Test passed according to Section 10 of the standard |
| Shock form   | Half sine   |
| Shock duration   | 30 ms   |
| Number of shocks per axis  | 3 pos. und 3 neg.                                   |
| Vibration and shock stress for rolling stock equipment                       | Passed  |

| Commercial data       |                   |
|-----------------------|-------------------|
| Product Group         | 18 (X-COM-System) |
| PU (SPU)              | 200 pcs           |
| Packaging type        | Box               |
| Country of origin     | DE                |
| GTIN                  | 4044918471268     |
| Customs tariff number | 85366990990       |

| Product classification |                      |
|------------------------|----------------------|
| UNSPSC                 | 39121409             |
| eCl@ss 10.0            | 27-14-11-06          |
| eCl@ss 9.0             | 27-14-11-06          |
| ETIM 9.0               | EC001284             |
| ETIM 8.0               | EC001284             |
| ECCN                   | NO US CLASSIFICATION |




| Environmental Product Compliance |                         |
|----------------------------------|-------------------------|
| RoHS Compliance Status           | Compliant, No Exemption |

Approvals / Certificates

| General approvals                     |           |                  | Declarations of conformity and manufacturer's declarations |          |                  |
|---------------------------------------|-----------|------------------|--|----------|------------------|
|                                       |           |                  |  |          |                  |
| Approval                              | Standard  | Certificate Name | Approval   | Standard | Certificate Name |
| CCA<br>DEKRA Certification B.V.       | EN 60947  | NTR NL-7626      | EU-Declaration of Conformity<br>WAGO GmbH & Co. KG         | -        | -                |
| CCA<br>DEKRA Certification B.V.       | EN 61984  | 2190419.02       | Railway<br>WAGO GmbH & Co. KG                              | -        | Z00004428.000    |
| CCA<br>DEKRA Certification B.V.       | IEC 61984 | NL-47799/A1      |  |          |                  |
| CSA<br>CSA Group                      | C22.2     | 1101144          |  |          |                  |
| KEMA/KEUR<br>DEKRA Certification B.V. | EN 60947  | 2190419.01       |  |          |                  |
| UL<br>Underwriters Laboratories Inc.  | UL 1977   | E 45171          |  |          |                  |
| UR<br>Underwriters Laboratories Inc.  | UL 1059   | E45172           |  |          |                  |



Approvals for marine applications

|  |  |  |
|--|---|---|
| Approval   | Standard  | Certificate Name  |
| ABS<br>American Bureau of Ship-<br>ping  | EN 60947  | 20-HG1941090-PDA  |
| BV<br>Bureau Veritas S.A.  | EN 60947  | 07436/F0 BV   |
| DNV GL<br>Det Norske Veritas, Ger-<br>manischer Lloyd                            | -   | TAE00001V2  |

Downloads

Environmental Product Compliance

| Compliance Search                           |
|---|
| Environmental Product<br>Compliance 769-101 |



Documentation

| Bid Text         |
|------------------|
| 769-101          |
| 19.02.2019       |
| xml<br>3.22 KB   |
| 769-101          |
| 27.11.2018       |
| docx<br>14.34 KB |



CAD/CAE-Data

| CAD data             |
|----------------------|
| 2D/3D Models 769-101 |



| CAE data                     |
|------------------------------|
| EPLAN Data Portal<br>769-101 |
| WSCAD Universe<br>769-101    |
| ZUKEN Portal 769-101         |



1 Compatible Products

1.1 System counterpart

1.1.1 Carrier terminal block for fuses and electronic modules



[Item No.: 769-181](#)  
1-conductor/1-pin carrier terminal block;  
with 2 jumper positions; for DIN-rail 35 x  
15 and 35 x 7.5; 4 mm²; CAGE CLAMP®;  
4,00 mm²; gray



[Item No.: 769-185/769-314](#)  
1-conductor/1-pin terminal block for  
pluggable modules; 10-pole; with 2 jum-  
per positions; with orange separator pla-  
te; for DIN-rail 35 x 15 and 35 x 7.5; 4  
mm²; CAGE CLAMP®; 4,00 mm²; gray



[Item No.: 769-182/769-314](#)  
1-conductor/1-pin terminal block for  
pluggable modules; 4-pole; with 2 jumper  
positions; with orange separator plate; for  
DIN-rail 35 x 15 and 35 x 7.5; 4 mm²; CA-  
GE CLAMP®; 4,00 mm²; gray



[Item No.: 769-183/769-314](#)  
1-conductor/1-pin terminal block for  
pluggable modules; 6-pole; with 2 jumper  
positions; with orange separator plate; for  
DIN-rail 35 x 15 and 35 x 7.5; 4 mm²; CA-  
GE CLAMP®; 4,00 mm²; gray



1.1.1 Carrier terminal block for fuses and electronic modules



**Item No.: 769-184/769-314**  
1-conductor/1-pin terminal block for pluggable modules; 8-pole; with 2 jumper positions; with orange separator plate; for DIN-rail 35 x 15 and 35 x 7.5; 4 mm<sup>2</sup>; CAGE CLAMP®; 4,00 mm<sup>2</sup>; gray



**Item No.: 769-161**  
2-pin carrier terminal block; with 2 jumper positions; for DIN-rail 35 x 15 and 35 x 7.5; gray

1.1.2 Component terminal block with diode



**Item No.: 769-218/281-410**  
1-conductor/1-pin component carrier terminal block; with 2 jumper positions; with diode 1N4007; anode, left side; for DIN-rail 35 x 15 and 35 x 7.5; 4 mm<sup>2</sup>; CAGE CLAMP®; gray



**Item No.: 769-218/281-411**  
1-conductor/1-pin component carrier terminal block; with 2 jumper positions; with diode 1N4007; anode, right side; for DIN-rail 35 x 15 and 35 x 7.5; 4 mm<sup>2</sup>; CAGE CLAMP®; gray



**Item No.: 769-238/281-410**  
1-conductor/1-pin component carrier terminal block; with diode 1N4007; anode, left side; for DIN-rail 35 x 15 and 35 x 7.5; 4 mm<sup>2</sup>; CAGE CLAMP®; gray



**Item No.: 769-238/281-411**  
1-conductor/1-pin component carrier terminal block; with diode 1N4007; anode, right side; for DIN-rail 35 x 15 and 35 x 7.5; 4 mm<sup>2</sup>; CAGE CLAMP®; gray



**Item No.: 769-208/281-410**  
2-pin component carrier block; with 2 jumper positions; with diode 1N4007; anode, left side; for DIN-rail 35 x 15 and 35 x 7.5; 4 mm<sup>2</sup>; gray



**Item No.: 769-208/281-411**  
2-pin component carrier block; with 2 jumper positions; with diode 1N4007; anode, right side; for DIN-rail 35 x 15 and 35 x 7.5; 4 mm<sup>2</sup>; gray



**Item No.: 769-228/281-410**  
2-pin component carrier block; with diode 1N4007; anode, left side; for DIN-rail 35 x 15 and 35 x 7.5; 4 mm<sup>2</sup>; gray



**Item No.: 769-228/281-411**  
2-pin component carrier block; with diode 1N4007; anode, right side; for DIN-rail 35 x 15 and 35 x 7.5; 4 mm<sup>2</sup>; gray

1.1.3 Component terminal block with LED



**Item No.: 769-239/281-413**  
1-conductor/1-pin component carrier terminal block; LED (red); 24 VDC; for DIN-rail 35 x 15 and 35 x 7.5; 4 mm<sup>2</sup>; CAGE CLAMP®; gray



**Item No.: 769-239/281-434**  
1-conductor/1-pin component carrier terminal block; LED (red); 24 VDC; for DIN-rail 35 x 15 and 35 x 7.5; 4 mm<sup>2</sup>; CAGE CLAMP®; gray



**Item No.: 769-219/281-413**  
1-conductor/1-pin component carrier terminal block; with 2 jumper positions; LED (red); 24 VDC; for DIN-rail 35 x 15 and 35 x 7.5; 4 mm<sup>2</sup>; CAGE CLAMP®; gray



**Item No.: 769-219/281-434**  
1-conductor/1-pin component carrier terminal block; with 2 jumper positions; LED (red); 24 VDC; for DIN-rail 35 x 15 and 35 x 7.5; 4 mm<sup>2</sup>; CAGE CLAMP®; gray



**Item No.: 769-229/281-413**  
2-pin component carrier block; LED (red); 24 VDC; for DIN-rail 35 x 15 and 35 x 7.5; gray



**Item No.: 769-229/281-434**  
2-pin component carrier block; LED (red); 24 VDC; for DIN-rail 35 x 15 and 35 x 7.5; gray



**Item No.: 769-209/281-413**  
2-pin component carrier block; with 2 jumper positions; LED (red); 24 VDC; for DIN-rail 35 x 15 and 35 x 7.5; gray



**Item No.: 769-209/281-434**  
2-pin component carrier block; with 2 jumper positions; LED (red); 24 VDC; for DIN-rail 35 x 15 and 35 x 7.5; gray

1.1.4 Disconnect terminal block



**Item No.: 769-232**  
1-conductor/1-pin disconnect carrier terminal block; for DIN-rail 35 x 15 and 35 x 7.5; 4 mm<sup>2</sup>; CAGE CLAMP®; 4,00 mm<sup>2</sup>; gray



**Item No.: 769-212**  
1-conductor/1-pin disconnect carrier terminal block; with 2 jumper positions; for DIN-rail 35 x 15 and 35 x 7.5; 4 mm<sup>2</sup>; CAGE CLAMP®; 4,00 mm<sup>2</sup>; gray



**Item No.: 769-233**  
1-conductor/1-pin disconnect carrier terminal block; with shield contact; for DIN-rail 35 x 15 and 35 x 7.5; 4 mm<sup>2</sup>; CAGE CLAMP®; 4,00 mm<sup>2</sup>; gray



**Item No.: 769-213**  
1-conductor/1-pin disconnect carrier terminal block; with shield contact; with 2 jumper positions; for DIN-rail 35 x 15 and 35 x 7.5; 4 mm<sup>2</sup>; CAGE CLAMP®; 4,00 mm<sup>2</sup>; gray



**Item No.: 769-222**  
2-pin disconnect carrier terminal block; for DIN-rail 35 x 15 and 35 x 7.5; gray



**Item No.: 769-202**  
2-pin disconnect carrier terminal block; with 2 jumper positions; for DIN-rail 35 x 15 and 35 x 7.5; gray



**Item No.: 769-223**  
2-pin disconnect carrier terminal block; with shield contact; for DIN-rail 35 x 15 and 35 x 7.5; gray



**Item No.: 769-203**  
2-pin disconnect carrier terminal block; with shield contact; with 2 jumper positions; for DIN-rail 35 x 15 and 35 x 7.5; gray



1.1.5 Double-deck terminal block



**Item No.: 870-127**  
1-conductor/1-pin double deck receptacle terminal block; Ground conductor/through terminal block; 2.5 mm<sup>2</sup>; PE/L; for DIN-rail 35 x 15 and 35 x 7.5; CAGE CLAMP®; 2,50 mm<sup>2</sup>; gray



**Item No.: 870-117**  
1-conductor/1-pin double deck receptacle terminal block; Ground conductor/through terminal block; 2.5 mm<sup>2</sup>; PE/N; for DIN-rail 35 x 15 and 35 x 7.5; CAGE CLAMP®; 2,50 mm<sup>2</sup>; gray



**Item No.: 870-101**  
1-conductor/1-pin double deck receptacle terminal block; Through/through terminal block; 2.5 mm<sup>2</sup>; L/L; for DIN-rail 35 x 15 and 35 x 7.5; CAGE CLAMP®; 2,50 mm<sup>2</sup>; gray



**Item No.: 870-103**  
1-conductor/1-pin double deck receptacle terminal block; Through/through terminal block; 2.5 mm<sup>2</sup>; L/N; for DIN-rail 35 x 15 and 35 x 7.5; CAGE CLAMP®; 2,50 mm<sup>2</sup>; gray



**Item No.: 870-102**  
1-conductor/1-pin double deck receptacle terminal block; Through/through terminal block; 2.5 mm<sup>2</sup>; N/L; for DIN-rail 35 x 15 and 35 x 7.5; CAGE CLAMP®; 2,50 mm<sup>2</sup>; gray



**Item No.: 870-104**  
1-conductor/1-pin double deck receptacle terminal block; Through/through terminal block; 2.5 mm<sup>2</sup>; N/N; for DIN-rail 35 x 15 and 35 x 7.5; CAGE CLAMP®; 2,50 mm<sup>2</sup>; blue



**Item No.: 870-1131**  
2-conductor/2-pin double-deck carrier terminal; 2-conductor/1-pin through terminal block; 2.5 mm<sup>2</sup>; L/L; for DIN-rail 35 x 15 and 35 x 7.5; CAGE CLAMP®; 2,50 mm<sup>2</sup>; gray



**Item No.: 870-108**  
2-conductor/2-pin, double-deck carrier terminal block; 2-conductor/2-pin through terminal block; 2.5 mm<sup>2</sup>; L; internal commoning; conductor entry with violet marking; for DIN-rail 35 x 15 and 35 x 7.5; CAGE CLAMP®; 2,50 mm<sup>2</sup>; gray



**Item No.: 870-109**  
2-conductor/2-pin, double-deck carrier terminal block; 2-conductor/2-pin through terminal block; 2.5 mm<sup>2</sup>; N; internal commoning; conductor entry with violet marking; for DIN-rail 35 x 15 and 35 x 7.5; CAGE CLAMP®; 2,50 mm<sup>2</sup>; blue



**Item No.: 870-131**  
2-conductor/2-pin, double-deck carrier terminal block; Through/through terminal block; 2.5 mm<sup>2</sup>; L/L; for DIN-rail 35 x 15 and 35 x 7.5; CAGE CLAMP®; 2,50 mm<sup>2</sup>; gray



**Item No.: 870-151**  
2-Pin/2-pin double deck receptacle terminal block; Through/through terminal block; L/L; for DIN-rail 35 x 15 and 35 x 7.5; CAGE CLAMP®; gray



**Item No.: 870-1138**  
4-conductor/2-pin double-deck carrier terminal block; 4-conductor/2-pin through terminal block; 2.5 mm<sup>2</sup>; L/L; internal commoning; conductor entry with violet marking; for DIN-rail 35 x 15 and 35 x 7.5; CAGE CLAMP®; 2,50 mm<sup>2</sup>; gray



**Item No.: 870-138**  
4-conductor/4-pin, double-deck carrier terminal block; 4-conductor/4-pin through terminal block; 2.5 mm<sup>2</sup>; L; internal commoning; conductor entry with violet marking; for DIN-rail 35 x 15 and 35 x 7.5; CAGE CLAMP®; 2,50 mm<sup>2</sup>; gray



**Item No.: 870-158**  
4-pin, double-deck carrier terminal block; 4-pin through terminal block; L; internal commoning; female plug conductor entry with violet marking; for DIN-rail 35 x 15 and 35 x 7.5; gray

1.1.6 Ground terminal block



**Item No.: 870-127**  
1-conductor/1-pin double deck receptacle terminal block; Ground conductor/through terminal block; 2.5 mm<sup>2</sup>; PE/L; for DIN-rail 35 x 15 and 35 x 7.5; CAGE CLAMP®; 2,50 mm<sup>2</sup>; gray



**Item No.: 870-117**  
1-conductor/1-pin double deck receptacle terminal block; Ground conductor/through terminal block; 2.5 mm<sup>2</sup>; PE/N; for DIN-rail 35 x 15 and 35 x 7.5; CAGE CLAMP®; 2,50 mm<sup>2</sup>; gray

1.1.7 Shield termination



**Item No.: 769-231**  
1-conductor/1-pin carrier terminal block; with shield contact; for DIN-rail 35 x 15 and 35 x 7.5; 4 mm<sup>2</sup>; CAGE CLAMP®; 4,00 mm<sup>2</sup>; gray



**Item No.: 769-233**  
1-conductor/1-pin disconnect carrier terminal block; with shield contact; for DIN-rail 35 x 15 and 35 x 7.5; 4 mm<sup>2</sup>; CAGE CLAMP®; 4,00 mm<sup>2</sup>; gray



**Item No.: 769-213**  
1-conductor/1-pin disconnect carrier terminal block; with shield contact; with 2 jumper positions; for DIN-rail 35 x 15 and 35 x 7.5; 4 mm<sup>2</sup>; CAGE CLAMP®; 4,00 mm<sup>2</sup>; gray



**Item No.: 769-211**  
2-conductor/2-pin carrier terminal block; with shield contact; for DIN-rail 35 x 15 and 35 x 7.5; 4 mm<sup>2</sup>; CAGE CLAMP®; 4,00 mm<sup>2</sup>; gray



**Item No.: 769-221**  
2-pin carrier terminal block; with shield contact; for DIN-rail 35 x 15 and 35 x 7.5; gray



**Item No.: 769-223**  
2-pin disconnect carrier terminal block; with shield contact; for DIN-rail 35 x 15 and 35 x 7.5; gray



**Item No.: 769-203**  
2-pin disconnect carrier terminal block; with shield contact; with 2 jumper positions; for DIN-rail 35 x 15 and 35 x 7.5; gray



**Item No.: 769-201**  
4-pin carrier terminal block; with shield contact; for DIN-rail 35 x 15 and 35 x 7.5; gray



1.1.8 Through terminal block



**Item No.: 769-176**  
1-conductor/1-pin carrier terminal block; for DIN-rail 35 x 15 and 35 x 7.5; 4 mm<sup>2</sup>; CAGE CLAMP®; 4,00 mm<sup>2</sup>; gray



**Item No.: 769-176/000-012**  
1-conductor/1-pin carrier terminal block; for DIN-rail 35 x 15 and 35 x 7.5; 4 mm<sup>2</sup>; CAGE CLAMP®; 4,00 mm<sup>2</sup>; orange



**Item No.: 769-231**  
1-conductor/1-pin carrier terminal block; with shield contact; for DIN-rail 35 x 15 and 35 x 7.5; 4 mm<sup>2</sup>; CAGE CLAMP®; 4,00 mm<sup>2</sup>; gray



**Item No.: 769-214**  
1-conductor/1-pin disconnect carrier terminal block; with 3 jumper positions; for DIN-rail 35 x 15 and 35 x 7.5; 4 mm<sup>2</sup>; 4,00 mm<sup>2</sup>; gray



**Item No.: 870-127**  
1-conductor/1-pin double deck receptacle terminal block; Ground conductor/through terminal block; 2.5 mm<sup>2</sup>; PE/L; for DIN-rail 35 x 15 and 35 x 7.5; CAGE CLAMP®; 2,50 mm<sup>2</sup>; gray



**Item No.: 870-117**  
1-conductor/1-pin double deck receptacle terminal block; Ground conductor/through terminal block; 2.5 mm<sup>2</sup>; PE/N; for DIN-rail 35 x 15 and 35 x 7.5; CAGE CLAMP®; 2,50 mm<sup>2</sup>; gray



**Item No.: 870-101**  
1-conductor/1-pin double deck receptacle terminal block; Through/through terminal block; 2.5 mm<sup>2</sup>; L/L; for DIN-rail 35 x 15 and 35 x 7.5; CAGE CLAMP®; 2,50 mm<sup>2</sup>; gray



**Item No.: 870-103**  
1-conductor/1-pin double deck receptacle terminal block; Through/through terminal block; 2.5 mm<sup>2</sup>; L/N; for DIN-rail 35 x 15 and 35 x 7.5; CAGE CLAMP®; 2,50 mm<sup>2</sup>; gray



**Item No.: 870-102**  
1-conductor/1-pin double deck receptacle terminal block; Through/through terminal block; 2.5 mm<sup>2</sup>; N/L; for DIN-rail 35 x 15 and 35 x 7.5; CAGE CLAMP®; 2,50 mm<sup>2</sup>; gray



**Item No.: 870-104**  
1-conductor/1-pin double deck receptacle terminal block; Through/through terminal block; 2.5 mm<sup>2</sup>; N/N; for DIN-rail 35 x 15 and 35 x 7.5; CAGE CLAMP®; 2,50 mm<sup>2</sup>; blue



**Item No.: 769-251/000-006**  
2-conductor/1-pin carrier terminal block; 4 mm<sup>2</sup>; for DIN-rail 35 x 15 and 35 x 7.5; CAGE CLAMP®; 4,00 mm<sup>2</sup>; blue



**Item No.: 769-251**  
2-conductor/1-pin carrier terminal block; 4 mm<sup>2</sup>; for DIN-rail 35 x 15 and 35 x 7.5; CAGE CLAMP®; 4,00 mm<sup>2</sup>; gray



**Item No.: 769-171/000-006**  
2-conductor/2-pin carrier terminal block; for DIN-rail 35 x 15 and 35 x 7.5; 4 mm<sup>2</sup>; CAGE CLAMP®; 4,00 mm<sup>2</sup>; blue



**Item No.: 769-171**  
2-conductor/2-pin carrier terminal block; for DIN-rail 35 x 15 and 35 x 7.5; 4 mm<sup>2</sup>; CAGE CLAMP®; 4,00 mm<sup>2</sup>; gray



**Item No.: 769-211**  
2-conductor/2-pin carrier terminal block; with shield contact; for DIN-rail 35 x 15 and 35 x 7.5; 4 mm<sup>2</sup>; CAGE CLAMP®; 4,00 mm<sup>2</sup>; gray



**Item No.: 870-1131**  
2-conductor/2-pin double-deck carrier terminal; 2-conductor/1-pin through terminal block; 2.5 mm<sup>2</sup>; L/L; for DIN-rail 35 x 15 and 35 x 7.5; CAGE CLAMP®; 2,50 mm<sup>2</sup>; gray



**Item No.: 870-108**  
2-conductor/2-pin, double-deck carrier terminal block; 2-conductor/2-pin through terminal block; 2.5 mm<sup>2</sup>; L; internal commoning; conductor entry with violet marking; for DIN-rail 35 x 15 and 35 x 7.5; CAGE CLAMP®; 2,50 mm<sup>2</sup>; gray



**Item No.: 870-109**  
2-conductor/2-pin, double-deck carrier terminal block; 2-conductor/2-pin through terminal block; 2.5 mm<sup>2</sup>; N; internal commoning; conductor entry with violet marking; for DIN-rail 35 x 15 and 35 x 7.5; CAGE CLAMP®; 2,50 mm<sup>2</sup>; blue



**Item No.: 870-131**  
2-conductor/2-pin, double-deck carrier terminal block; Through/through terminal block; 2.5 mm<sup>2</sup>; L/L; for DIN-rail 35 x 15 and 35 x 7.5; CAGE CLAMP®; 2,50 mm<sup>2</sup>; gray



**Item No.: 769-156/000-006**  
2-pin carrier terminal block; for DIN-rail 35 x 15 and 35 x 7.5; blue



**Item No.: 769-156**  
2-pin carrier terminal block; for DIN-rail 35 x 15 and 35 x 7.5; gray



**Item No.: 769-221**  
2-pin carrier terminal block; with shield contact; for DIN-rail 35 x 15 and 35 x 7.5; gray



**Item No.: 870-151**  
2-Pin/2-pin double deck receptacle terminal block; Through/through terminal block; L/L; for DIN-rail 35 x 15 and 35 x 7.5; CAGE CLAMP®; gray



**Item No.: 870-1138**  
4-conductor/2-pin double-deck carrier terminal block; 4-conductor/2-pin through terminal block; 2.5 mm<sup>2</sup>; L/L; internal commoning; conductor entry with violet marking; for DIN-rail 35 x 15 and 35 x 7.5; CAGE CLAMP®; 2,50 mm<sup>2</sup>; gray



**Item No.: 870-138**  
4-conductor/4-pin, double-deck carrier terminal block; 4-conductor/4-pin through terminal block; 2.5 mm<sup>2</sup>; L; internal commoning; conductor entry with violet marking; for DIN-rail 35 x 15 and 35 x 7.5; CAGE CLAMP®; 2,50 mm<sup>2</sup>; gray



**Item No.: 769-151/000-004**  
4-pin carrier terminal block; for DIN-rail 35 x 15 and 35 x 7.5; black



**Item No.: 769-151**  
4-pin carrier terminal block; for DIN-rail 35 x 15 and 35 x 7.5; gray



**Item No.: 769-151/000-005**  
4-pin carrier terminal block; for DIN-rail 35 x 15 and 35 x 7.5; red



**Item No.: 769-151/000-002**  
4-pin carrier terminal block; for DIN-rail 35 x 15 and 35 x 7.5; yellow



**Item No.: 769-201**  
4-pin carrier terminal block; with shield contact; for DIN-rail 35 x 15 and 35 x 7.5; gray



**Item No.: 870-158**  
4-pin, double-deck carrier terminal block; 4-pin through terminal block; L; internal commoning; female plug conductor entry with violet marking; for DIN-rail 35 x 15 and 35 x 7.5; gray



1.2 Optional Accessories

1.2.1 Cover

1.2.1.1 Cover



**Item No.: 769-436**  
Jumper cover; for 1-conductor female plugs; for 5 poles; gray

1.2.2 Ferrule

1.2.2.1 Ferrule



**Item No.: 216-301**  
Ferrule; Sleeve for 0.25 mm² / AWG 24; insulated; electro-tin plated; yellow



**Item No.: 216-302**  
Ferrule; Sleeve for 0.34 mm² / 22 AWG; insulated; electro-tin plated; light turquoise



**Item No.: 216-201**  
Ferrule; Sleeve for 0.5 mm² / 20 AWG; insulated; electro-tin plated; electrolytic copper; acc. to DIN 46228, Part 4/09.90; white



**Item No.: 216-101**  
Ferrule; Sleeve for 0.5 mm² / AWG 22; un-insulated; electro-tin plated; silver-colored



**Item No.: 216-202**  
Ferrule; Sleeve for 0.75 mm² / 18 AWG; insulated; electro-tin plated; gray



**Item No.: 216-102**  
Ferrule; Sleeve for 0.75 mm² / AWG 20; un-insulated; electro-tin plated; silver-colored



**Item No.: 216-203**  
Ferrule; Sleeve for 1 mm² / AWG 18; insulated; electro-tin plated; red



**Item No.: 216-103**  
Ferrule; Sleeve for 1 mm² / AWG 18; un-insulated; electro-tin plated



**Item No.: 216-204**  
Ferrule; Sleeve for 1.5 mm² / AWG 16; insulated; electro-tin plated; black



**Item No.: 216-104**  
Ferrule; Sleeve for 1.5 mm² / AWG 16; un-insulated; electro-tin plated; silver-colored



**Item No.: 216-206**  
Ferrule; Sleeve for 2.5 mm² / AWG 14; insulated; electro-tin plated; blue

1.2.3 Insulation stop

1.2.3.1 Insulation stop



**Item No.: 769-470**  
Insulation stop; 0.08 - 0.2 mm² "s" (0.14 mm² "f-st"); 5 pieces/strip; white



**Item No.: 769-471**  
Insulation stop; 0.25 - 0.5 mm²; 5 pieces/strip; light gray



**Item No.: 769-472**  
Insulation stop; 0.75 - 1 mm²; 5 pieces/strip; dark gray

1.2.4 Jumper

1.2.4.1 Jumper



**Item No.: 769-402**  
Jumper; insulated; gray

1.2.5 Locking system

1.2.5.1 Locking system



**Item No.: 769-428**  
Locking lever; for female connectors; 1 part; Pin spacing 5 mm; 1-pole; gray



**Item No.: 769-429**  
Locking lever; for female connectors; 1 part; Pin spacing 5 mm; 1-pole; orange

1.2.6 Marking

1.2.6.1 Label



**Item No.: 210-805**  
Labels; for Smart Printer; permanent adhesive; 6 x 15 mm; 3000 pieces on roll; white



**Item No.: 210-805/000-002**  
Labels; for Smart Printer; permanent adhesive; 6 x 15 mm; 3000 pieces on roll; yellow

1.2.6.2 Marker



**Item No.: 2009-145**  
Mini-WSB Inline; for Smart Printer; 1700 pieces on roll; stretchable 5 - 5.2 mm; plain; snap-on type; white



**Item No.: 248-501**  
Mini-WSB marking card; as card; not stretchable; plain; snap-on type; white

1.2.6.3 Marking strip



**Item No.: 210-831**  
Marking strips; on reel; 2.3 mm wide; plain; Self-adhesive; white



**Item No.: 210-832**  
Marking strips; on reel; 3 mm wide; plain; Self-adhesive; white



**Item No.: 210-834**  
Marking strips; on reel; 5 mm wide; plain; Self-adhesive; white

1.2.7 Protective warning marker

1.2.7.1 Cover



**Item No.: 280-415**  
Protective warning marker; for 5 terminal blocks; with high-voltage symbol, black; yellow

1.2.8 Strain relief

1.2.8.1 Strain relief



**Item No.: 769-410**  
Strain relief plate; for female and male connectors; 1 part; Pin spacing 5 mm; 1-pole; gray

1.2.9 Test and measurement

1.2.9.1 Testing accessories



Item No.: 210-136  
Test plug; 2 mm Ø; with 500 mm cable; red

1.2.10 Tool

1.2.10.1 Operating tool



Item No.: 210-490  
Operating tool



Item No.: 769-434  
Operating tool; made of insulating material; 1-way; loose; white

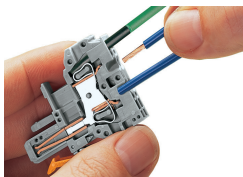
Installation Notes



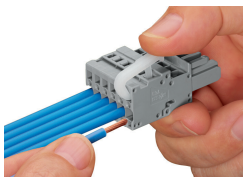
**1-pole female plug**  
Example:

- Phase selection in three-phase network
- Test plug with rated current capability
- Simplified circuit expansion – addition of base circuits requires only female plugs to be plugged in

Conductor termination



**CAGE CLAMP® connection**  
Female plug: Inserting/removing a conductor via operating tool.  
Operation 90° to conductor is also possible.  
With ferruled conductors, it is necessary to use a terminal block one size smaller than the conductor's nominal cross-section.

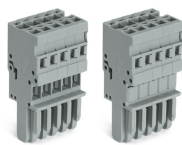
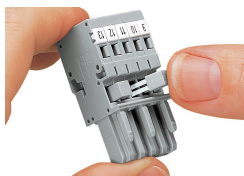


**Operating lever**  
Inserting a conductor – side-entry wiring (example shows a female plug).



**Operating tool**  
Inserting a conductor – side-entry wiring (example shows a female plug).  
With ferruled conductors, it is necessary to use a terminal block one size smaller than the conductor's nominal cross-section.

## Commoning



Commoning 1-conductor female plugs via miniature adjacent jumpers.

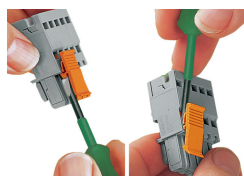
Jumper cover for 1-conductor female plugs

## Coding



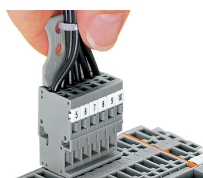
Coding a female plug by removing coding finger(s) via cutting tool. Do not remove the first and last coding fingers or use an additional locking lever.

## Locking system



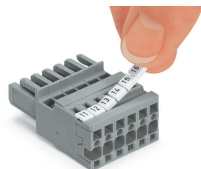
Locking/releasing a lever.

## Strain relief



Removing a female plug via conductor bundle provided with strain relief plate.

## Marking



Labeling a female plug with CAGE CLAMP® connection via Mini-WSB Quick Markers.