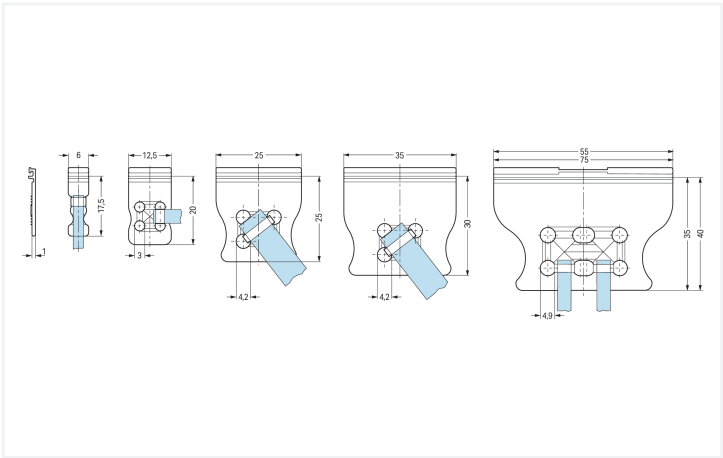


Color: ■ gray



Dimensions in mm  
The arrangement of the attachments for cable ties allows single conductors or multi-core cables to be secured in different ways. The width of the cable ties must correspond to the hole dimensions of the strain relief plates shown above.

Physical data		
Width		55 mm / 2.165 inches
Height		1.87 mm / 0.074 inches
Depth		37 mm / 1.457 inches

Mechanical data		
Mounting type		insert
Suitable		for standard male and female connectors (2.5 mm; 3.5 mm; 5 mm; 7.5 mm pin spacing)

Material data		
Note (material data)		<a href="#">Information on material specifications can be found here</a>
Color		gray
Fire load		0.11 MJ
Weight		2.6 g



Commercial data		
Product Group	3 (Multi Conn. System)	
PU (SPU)	50 (25) pcs	
Packaging type	Box	
Country of origin	DE	
GTIN	4045454309534	
Customs tariff number	85389099990	

Product classification		
UNSPSC	39121702	
eCl@ss 10.0	27-44-04-92	
eCl@ss 9.0	27-44-04-92	
ETIM 9.0	EC002848	
ETIM 8.0	EC002848	
ECCN	NO US CLASSIFICATION	

Environmental Product Compliance		
RoHS Compliance Status	Compliant,No Exemption	

Approvals / Certificates		
Approvals for marine applications		



Approval	Standard	Certificate Name
LR Lloyds Register	IEC 61984	96/20035 (E5)

Downloads		
Environmental Product Compliance		
Compliance Search		
Environmental Product Compliance 734-430		

Documentation				
Additional Information			Bid Text	
Technical Section	03.04.2019	pdf 2027.26 KB	734-430	
			19.02.2019	xml 2.49 KB
			734-430	
			27.04.2017	doc 23.50 KB

CAD/CAE-Data

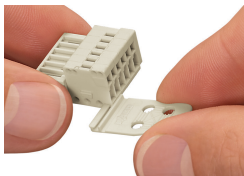
CAD data

2D/3D Models 734-430



Installation Notes

Installation



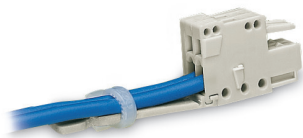
Strain relief plates for factory or in-the-field assembly

Application



Strain relief plate, for factory assembly  
1-conductor female connector, 2.5 mm pin spacing, light gray,  
12-pole, with strain relief plate  
733-112/034-000

Application



Strain relief plate, for factory assembly  
1-conductor female connector, 2.5 mm pin spacing, light gray,  
2-pole, with strain relief plate  
(733-102/032-000)