



Color: ■ gray

Electrical data

Ratings per IEC/EN	
Rated current	32 A

Physical data

Width	8.4 mm / 0.331 inches
Height	13.4 mm / 0.528 inches
Depth	38.7 mm / 1.524 inches
Jumper assignment	1-2

Material data

Note (material data)	Information on material specifications can be found here
Color	gray
Material group	I
Insulation material (main housing)	Polyamide (PA66)
Flammability class per UL94	V0
Fire load	0.035 MJ
Weight	4.9 g

Commercial data

Product Group	1 (Rail Mounted Terminal Blocks)
PU (SPU)	50 (25) pcs
Packaging type	Box
Country of origin	DE
GTIN	4044918398589
Customs tariff number	85366990990



Product classification		
UNSPSC		39121421
eCl@ss 10.0		27-14-11-40
eCl@ss 9.0		27-14-11-40
ETIM 9.0		EC000489
ETIM 8.0		EC000489
ECCN		NO US CLASSIFICATION

Environmental Product Compliance	
RoHS Compliance Status	Compliant,No Exemption

Downloads

Environmental Product Compliance

Compliance Search

Environmental Product Compliance 283-414

↓

Documentation				
Bid Text				
283-414	19.02.2019	xml	2.55 KB	↓
283-414	12.06.2017	doc	23.00 KB	↓

CAD/CAE-Data		
CAD data		CAE data
2D/3D Models 283-414		WSCAD Universe 283-414
		ZUKEN Portal 283-414

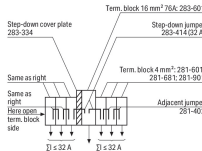
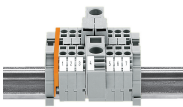
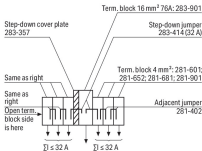
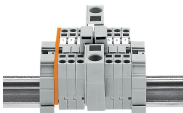
Installation Notes

Commoning



Commoning terminal blocks of different sizes – step down.
Push down the step-down jumper until fully inserted!

Commoning

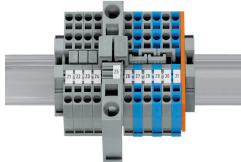
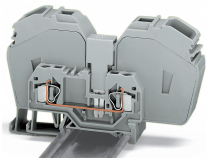
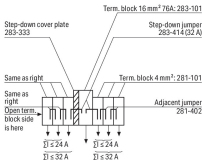
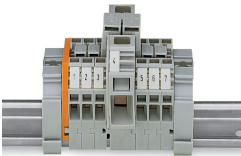


Commoning from 16 mm²/6 AWG (283 Series) to 4 mm²/12 AWG (281 Series) rail-mount terminal blocks via step-down jumpers.

Assembly example: Commoning from 16 mm²/6 AWG to 4 mm²/12 AWG rail-mount terminal blocks via step-down jumper (283-414).

Commoning from 16 mm²/6 AWG (283 Series) to 4 mm²/12 AWG (281 Series) rail-mount terminal blocks via step-down jumpers.

Assembly example: Commoning from 16 mm²/6 AWG to 4 mm²/12 AWG rail-mount terminal blocks via step-down jumper (283-414).

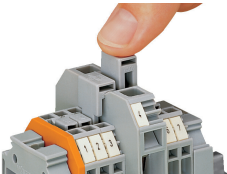


Commoning from 16 mm²/6 AWG (283 Series) to 4 mm²/12 AWG (281 Series) rail-mount terminal blocks via step-down jumpers.

Assembly example: Commoning from 16 mm²/6 AWG to 4 mm²/12 AWG rail-mount terminal blocks via step-down jumper (283-414).

Commoning with step-down jumper (283-414) from 285 Series (35 mm²/2 AWG) to 281 Series terminal blocks (4 mm²/12 AWG).

Commoning from 16 mm²/6 AWG (283 Series) to 4 mm²/12 AWG (281 Series) rail-mount terminal blocks via step-down jumpers.



Commoning side-entry rail-mount terminal blocks via step-down jumpers. Push down the step-down jumper until fully inserted.