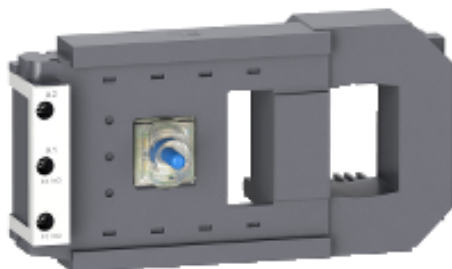


# LX1FL220

TeSys F - contactor coil - LX1FL - 220...240 V AC  
40...400 Hz



## Main

Range of product	TeSys F
Range	TeSys
Product or component type	Contactor coil
Device short name	LX1FL
Range compatibility	TeSys F LC1F contactor
Control circuit type	AC 40...400 Hz
Control circuit voltage	220...240 V AC 40...400 Hz
Average resistance	25.5 Ohm inrush at 20 °C 730 Ohm holding at 20 °C
Inductance of closed circuit	3.35 H
Product compatibility	LC1F630 LC1F1250
Operating time	40...80 ms closing 100...200 ms opening
Mechanical durability	5 Mcycles
Operating rate	1200 cyc/h at ≤ 55 °C

## Complementary

Coil technology	Without built-in suppressor module
Control circuit voltage limits	0.85...1.1 Uc at 55 °C operational 40...400 Hz 0.25...0.5 Uc at 55 °C drop-out 40...400 Hz
Inrush power in VA	1650 VA at 20 °C (cos f 0.9) 40...400 Hz
Hold-in power consumption in VA	22 VA at 20 °C (cos f 0.3) 40...400 Hz
Heat dissipation	20 W at 40...400 Hz

## Environment

Ambient air temperature for operation	> -5...55 °C
Product weight	1.5 kg

Contractual warranty

Warranty period	18 months
-----------------	-----------