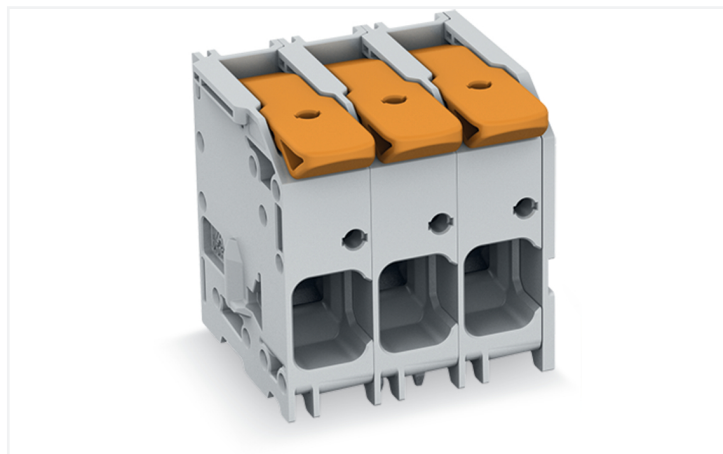
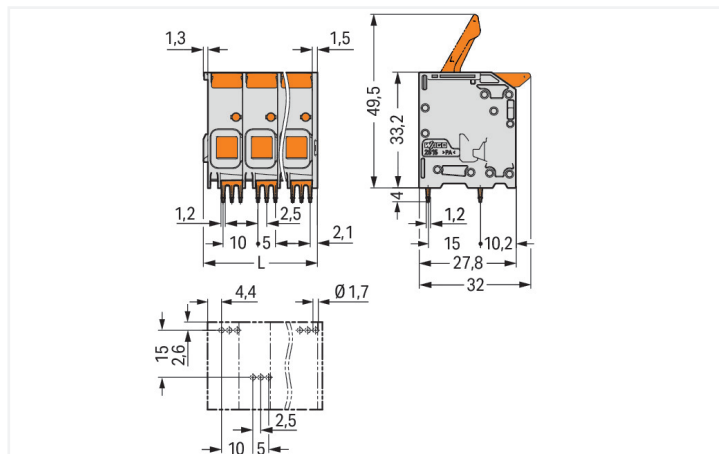
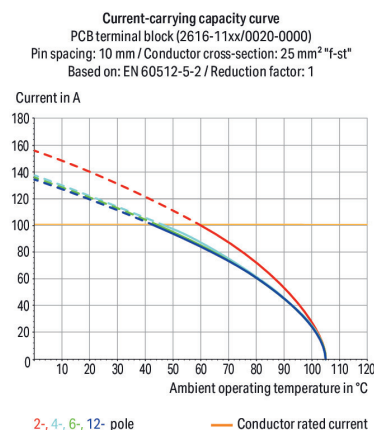
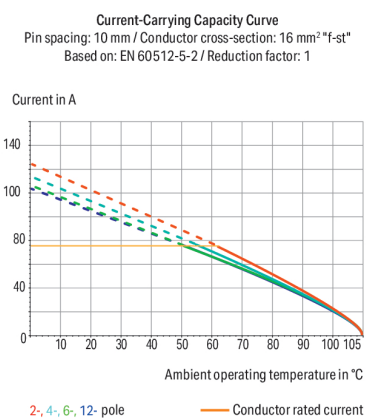


CLAMP®; gray



Similar to illustration


$$L = (\text{pole no.} - 1) \times \text{pin spacing} + 12.8 \text{ mm}$$


This PCB terminal block (item number 2616-1102/020-000) is designed for easy and secure connections. It is perfect for custom installations with different mounting types. Rated current and voltage are key factors to consider when selecting a PCB terminal block, as they determine the product's suitability for different applications. This product has a rated voltage of 1000 V and a rated current of 76 A, making it suitable for high-load applications. Strip lengths must be between 18 mm and 20 mm when connecting conductors to this PCB terminal block. This product features one conductor terminal and utilizes Push-in CAGE CLAMP®. Push-in CAGE CLAMP® connection technology is ideal for connecting all conductor types. It allows direct insertion of both solid and fine-stranded conductors with ferrules without the need for tools—all thanks to its pluggable design. The dimensions are 22.8 x 37.2 x 32 mm (width x height x depth). This PCB terminal block is suitable for conductor cross sections ranging from 0.75 mm² to 16 mm². Up to two potentials / two poles can be connected to this terminal strip using two clamping points on one level. The contacts are made of electrolytic copper (ECu), the gray housing is made of polyamide (PA66) for insulation, and the clamping spring is made of chrome-nickel spring steel (CrNi). The contact surface is coated with tin. A lever is used to operate this PCB terminal block. The PCB terminal block is designed for THT soldering. The conductor is designed to be inserted into the board at an angle of 0°. The solder pins are organized over the entire terminal strip (staggered) and are 1.2 x 1.2 mm cross-section and 4 mm in length. Each potential has three solder pins.

Variants:

Other pole numbers

Direct marking

Other colors

Other version

Other versions (or variants) can be requested from WAGO Sales or configured at <https://configurator.wago.com/>.



Electrical data

Ratings per IEC/EN 60664-1				Approvals per UL 1059			
Overvoltage category	III	III	II	Use group	B	C	D
Pollution degree	3	2	2	Rated voltage	600 V	600 V	-
Nominal voltage	1000 V	1000 V	1000 V	Rated current	66 A	66 A	-
Rated surge voltage	8 kV	8 kV	8 kV				
Rated current	76 A	76 A	76 A				

Approvals per CSA			
Use group	B	C	D
Rated voltage	600 V	600 V	-
Rated current	66 A	66 A	-

Connection data

Clamping units	2	Connection 1	
Total number of potentials	2	Connection technology	Push-in CAGE CLAMP®
Number of connection types	1	Actuation type	Lever
Number of levels	1	Solid conductor	0.75 ... 16 mm² / 18 ... 4 AWG
		Fine-stranded conductor	0.75 ... 25 mm² / 18 ... 4 AWG
		Fine-stranded conductor; with insulated ferrule	0.75 ... 16 mm²
		Fine-stranded conductor; with uninsulated ferrule	0.75 ... 16 mm²
		Fine-stranded conductor; with twin ferrule	0.75 ... 6 mm²
		Strip length	18 ... 20 mm / 0.71 ... 0.79 inches
		Conductor connection direction to PCB	0°
		Pole number	2

Physical data

Pin spacing	10 mm / 0.394 inches
Width	22.8 mm / 0.898 inches
Height	37.2 mm / 1.465 inches
Height from the surface	33.2 mm / 1.307 inches
Depth	32 mm / 1.26 inches
Solder pin length	4 mm
Solder pin dimensions	1.2 x 1.2 mm
Drilled hole diameter with tolerance	1.7 (+0.1) mm

PCB contact

PCB contact	THT
Solder pin arrangement	over the entire terminal strip (staggered)
Number of solder pins per potential	3



Material data	
Note (material data)	Information on material specifications can be found here
Color	gray
Material group	I
Insulation material (main housing)	Polyamide (PA66)
Flammability class per UL94	V0
Clamping spring material	Chrome-nickel spring steel (CrNi)
Contact material	Electrolytic copper (E _{Cu})
Contact Plating	Tin
Fire load	0.294 MJ
Actuator color	orange
Weight	19.3 g

Environmental requirements	
Limit temperature range	-60 ... +105 °C
Processing temperature	-35 ... +60 °C

Commercial data	
PU (SPU)	54 pcs
Packaging type	Box
Country of origin	PL
GTIN	4066966475432
Customs tariff number	85369010000

Product classification	
UNSPSC	39121409
eCl@ss 10.0	27-44-04-01
eCl@ss 9.0	27-44-04-01
ETIM 9.0	EC002643
ETIM 8.0	EC002643
ECCN	NO US CLASSIFICATION

Environmental Product Compliance	
RoHS Compliance Status	Compliant, No Exemption

Approvals / Certificates			
General approvals		General approvals	
		KEMA/KEUR	EN 60947-7-4
		DEKRA Certification B.V.	71-110774
		UL	C22.2 No. 158
		Underwriters Laboratories Inc.	UL-US- L45172-6187173-60217102-1
Approval	Standard	Certificate Name	
CB DEKRA Certification B.V.	EN 60947-7-4	NL-61617	
CB DEKRA Certification B.V.	IEC 60947-7-4	NL-107877	
CSA CSA Group	C22.2 No. 158	70154737	
CSA DEKRA Certification B.V.	C22.2	70154737	
DEKRA DEKRA Certification B.V.	EN 60947-7-4	71-148282	



Downloads

Environmental Product Compliance

Compliance Search

Environmental Product Compliance
2616-1102/020-000

↓

Documentation

Additional Information

Technical Section03.04.2019pdf2027.26 KB

↓

CAD/CAE-Data

CAD data

2D/3D Models
2616-1102/020-000

↓

CAE data

ZUKEN Portal
2616-1102/020-000

↓

PCB Design

Symbol and Footprint
via SamacSys
2616-1102/020-000

↓

Symbol and Footprint
via Ultra Librarian
2616-1102/020-000

↓

1 Compatible Products

1.1 Optional Accessories

1.1.1 Ferrule

1.1.1.1 Ferrule



[Item No.: 216-284](#)

Ferrule; Sleeve for 1.5 mm² / AWG 16; insulated; electro-tin plated; electrolytic copper; gastight crimped; acc. to DIN 46228, Part 4/09.90; black



[Item No.: 216-289](#)

Ferrule; Sleeve for 10 mm² / AWG 8; insulated; electro-tin plated; electrolytic copper; gastight crimped; acc. to DIN 46228, Part 4/09.90; red



[Item No.: 216-210](#)

Ferrule; Sleeve for 16 mm² / AWG 6; insulated; electro-tin plated; electrolytic copper; gastight crimped; acc. to DIN 46228, Part 4/09.90; blue



[Item No.: 216-286](#)

Ferrule; Sleeve for 2.5 mm² / AWG 14; insulated; electro-tin plated; electrolytic copper; gastight crimped; acc. to DIN 46228, Part 4/09.90; blue



[Item No.: 216-287](#)

Ferrule; Sleeve for 4 mm² / AWG 12; insulated; electro-tin plated; electrolytic copper; gastight crimped; acc. to DIN 46228, Part 4/09.90; gray



[Item No.: 216-288](#)

Ferrule; Sleeve for 6 mm² / AWG 10; insulated; electro-tin plated; electrolytic copper; gastight crimped; acc. to DIN 46228, Part 4/09.90; yellow

1.1.2 Jumper

1.1.2.1 Jumper

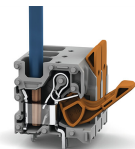


Item No.: 2616-902

Jumper; for conductor entry; 2-way; insulated; gray

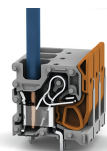
Installation Notes

Conductor termination



Insert fine-stranded conductors – and remove all conductors – via operating tool.

Conductor termination



Insert solid conductors via push-in termination.