

Color: ■ orange



Physical data	
Width	22 mm / 0.866 inches
Height	65.6 mm / 2.583 inches
Depth from upper-edge of DIN-rail	26 mm / 1.024 inches
Depth	32 mm / 1.26 inches
Mechanical data	
Mounting type	DIN-35 rail Screw mount
Suitable	for 2-, 3- and 5-conductor splicing connectors (222 Series)
Material data	
Note (material data)	<a href="#">Information on material specifications can be found here</a>
Color	orange
Material group	I
Insulation material (main housing)	Polyamide (PA66)
Flammability class per UL94	V0
Fire load	0.336 MJ
Weight	11.2 g



Commercial data	
Product Group	7 (Push Wire Conn.)
PU (SPU)	50 (10) pcs
Packaging type	Box
Country of origin	CN
GTIN	4045454714765
Customs tariff number	39269097900

Product classification	
UNSPSC	39121702
eCl@ss 10.0	27-14-11-92
eCl@ss 9.0	27-14-11-92
ETIM 9.0	EC002848
ETIM 8.0	EC002848
ECCN	NO US CLASSIFICATION

Environmental Product Compliance	
RoHS Compliance Status	Compliant,No Exemption

Downloads

Environmental Product Compliance

Compliance Search

Environmental Product Compliance 222-500

↓

Documentation			
Bid Text			
222-500	19.02.2019	xml 2.73 KB	↓
222-500	19.05.2017	doc 23.50 KB	↓

CAD/CAE-Data	
CAD data	CAE data
2D/3D Models 222-500	EPLAN Data Portal 222-500
	WSCAD Universe 222-500
	ZUKEN Portal 222-500

1 Compatible Products

1.1 Optional Accessories

1.1.1 Marking

1.1.1.1 Marking strip



Item No.: 210-834  
Marking strips; on reel; 5 mm wide; plain;  
Self-adhesive; white

1.1.2 Mounting adapter

1.1.2.1 Mounting accessories



Item No.: 222-510  
Angled DIN-rail adapter; in combination  
with mounting carrier; 221-500 or  
222-500; for DIN-35 rail mounting; gray



Item No.: 222-505  
Strain relief plate; for mounting carrier;  
221 or 222 Series, can be snapped

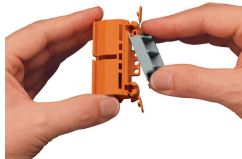
Installation Notes



Snapping the lateral connector safety  
lock onto the mounting carrier.



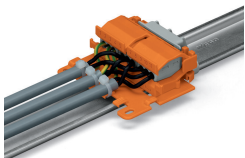
Securing a strain relief plate (222-505) to  
the mounting carrier.



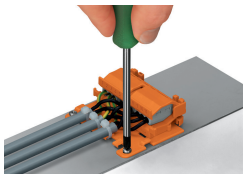
Snapping the angled DIN-rail adapter  
(222-510) onto the mounting carrier.



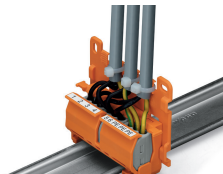
Horizontal mounting on DIN-35 rail using  
an angled DIN-rail adapter



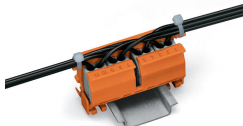
Horizontal mounting with strain relief plate  
on DIN-35 rail using an angled DIN-rail ad-  
apter



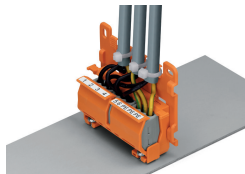
Horizontal screw mounting with strain re-  
lief plate on a flat surface



Vertical mounting with strain relief plate  
on DIN-35 rail;  
Marking clamping units via marking  
strips.



Strain relief via cable ties on the mounting  
carrier (transverse to the connectors' wi-  
ring direction);  
Molded marking clamping units



Mounting carrier with strain relief plate  
mounted vertically on a plate.  
Round cable secured via strain relief lug.