



Color: ■ orange

Physical data	
Width	3 mm / 0.118 inches
Height	125.5 mm / 4.941 inches
Depth from upper-edge of DIN-rail	64 mm / 2.52 inches

Mechanical data	
Mounting type	DIN-35 rail

Material data	
Note (material data)	Information on material specifications can be found here
Color	orange
Material group	I
Insulation material (main housing)	Polyamide (PA66)
Flammability class per UL94	V0
Fire load	0.442 MJ
Weight	15.7 g

Commercial data	
Product Group	2 (Terminal Block Accessories)
PU (SPU)	50 (25) pcs
Packaging type	Box
Country of origin	DE
GTIN	4045454654320
Customs tariff number	85389099990



Product classification		
UNSPSC		39121321
eCl@ss 10.0		27-14-11-33
eCl@ss 9.0		27-14-11-33
ETIM 9.0		EC000886
ETIM 8.0		EC000886
ECCN		NO US CLASSIFICATION

Environmental Product Compliance	
RoHS Compliance Status	Compliant,No Exemption

Downloads

Environmental Product Compliance	
Compliance Search	
Environmental Product Compliance 209-192	↓

Documentation

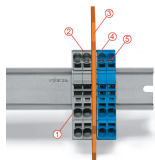
Bid Text			
209-192	19.02.2019	xml 2.53 KB	↓
209-192	04.01.2018	doc 23.50 KB	↓

CAD/CAE-Data

CAD data		CAE data	
2D/3D Models 209-192	↓	EPLAN Data Portal 209-192	↓
		WSCAD Universe 209-192	↓
		ZUKEN Portal 209-192	↓

Installation Notes

Ex application



A separator plate is located between the Ex e II and Ex i terminal strip.

End plate

Ex e II terminal blocks

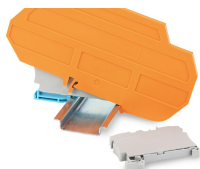
Separator plate for Ex e/Ex i applications

End plate

Ex i terminal blocks

According to EN 50020, a minimum distance of 50 mm must be kept between live parts of Ex e and Ex i circuits. The use of Ex e/Ex i separators is a space-saving solution when Ex e and Ex i terminal blocks are mounted on a common DIN-rail.

Security



Ex e II/Ex i terminal strip

Note:

The movable feet of terminal blocks and separator plates must face the same direction.