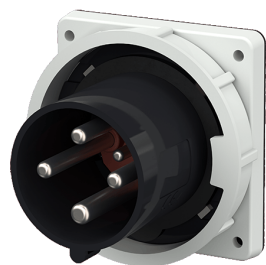


Panel mounted inlet
Part no. 3657

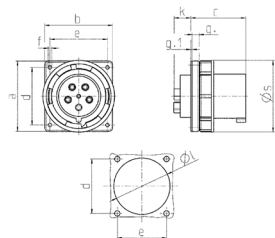


- screw terminals
- with highly heat resistant contact carrier
- nickel plated contacts
- a retaining nose to hold the hinged lid of the connector must be provided by the customer in order to ensure satisfactory locking

Technical specifications

Ampere	63 A
Poles	4 p
Voltage	500 V
Clock position	7 h
Hertz	50-60 Hz
Connection technology	Screw terminals
Contact	highly heat resistant contact carrier, nickel plated contacts
Protection type	IP 67
Weight	531 g
Declaration of Conformity	DE,VDE, CN,CQC

Drawing



Drawing 2 MB 166 Dim. in mm	Amp. Poles	63			125		
		3	4	5	3	4	5
a		110	110	110	130	130	130
b		106	106	106	130	130	130
c		86	86	86	112	112	112
d		90	90	90	104	104	104
e		90	90	90	104	104	104
f		5.5	5.5	5.5	6.5	6.5	6.5
g		12	12	12	18	18	18
g.1		2	2	2	2	2	2
k		28	28	28	28	28	28
l		88.5	88.5	88.5	95	95	95
s		113	113	113	132	132	132
Terminal for cond. cross section (mm²) min.-max.		6	6	6	25	25	25
		—16	—16	—16	—70	—70	—70