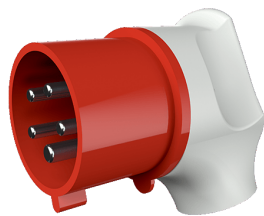


Angled plug
Part no. 3266



- screw terminals
- nickel plated contacts
- with grommet
- especially suited for use with sockets of the Cepex range

Technical specifications

Ampere	32 A
Poles	5 p
Voltage	400 V
Clock position	6 h
Hertz	50-60 Hz
Connection technology	Screw terminals
Contact	nickel plated contacts
Protection type	IP 44
Weight	249 g
Declaration of Conformity	CN,CQC

Drawing

