

Central Bolted Tag fuse-links gG 690VAC/460VDC

LOW VOLTAGE IEC FUSES

BS FUSE-LINKS



The fuse complies with standard EN 60269-2 and standard BS 88 part 2. These fuses are designed for : “General purpose use” protection (gG type). This fuse range insures an excellent current limitation for all overloads on a large range of applications. Their size cannot allow exchange by other fuses of higher rating in their range. They are screwed into fuseholders or bolted directly onto busbars, or in fuse interrupters disconnectors.

TECHNICAL DATA OVERVIEW

Current Range In	80 to 800 A
Rated voltage AC (IEC)	690 V
Rated voltage DC (IEC)	460 V
Breaking capacity AC	80 kA
Breaking capacity DC	40 kA
Speed/Characteristic	gG
Body Material	Ceramic
BS type	BTC, BTF, BTKF, BTMF, BTM

FEATURES & BENEFITS

- Excellent current limitation for all overloads

APPLICATIONS

- These fuses are designed for : “General purpose use” protection (gG type)

STANDARDS

- EN 60269-2
- BS88-2



Central Bolted Tag fuse-links gG 690VAC/460VDC

PRODUCT RANGE



BTC69V80

Type B1 690VAC/460VDC gG BTC 2 hole

Catalog number	Item number	Rated voltage AC (IEC)	Rated voltage DC (IEC)	Rated current I _n	Pre-arcing I ² t	Clearing I ² t at Rated Voltage	Rated breaking capacity AC	Rated breaking capacity DC	Power dissipation at I _n	Weight
BTC69V80	B1019775	690 V	460 V	80 A	8500 A ² s	48500 A ² s	80 kA	40 kA	6.5 W	0.13 kg
BTC69V100	A1006618	690 V	460 V	100 A	14000 A ² s	80000 A ² s	80 kA	40 kA	7.5 W	0.13 kg



BTF69V200

Type B2 690VAC/460VDC gG BTF 2 hole

Catalog number	Item number	Rated voltage AC (IEC)	Rated voltage DC (IEC)	Rated current I _n	Pre-arcing I ² t	Clearing I ² t at Rated Voltage	Rated breaking capacity AC	Rated breaking capacity DC	Power dissipation at I _n	Weight
BTF69V125	D1006621	690 V	460 V	125 A	28000 A ² s	140000 A ² s	80 kA	40 kA	11.3 W	0.31 kg
BTF69V160	E1006622	690 V	460 V	160 A	60000 A ² s	300000 A ² s	80 kA	40 kA	14.5 W	0.31 kg
BTF69V200	F1006623	690 V	460 V	200 A	105000 A ² s	350000 A ² s	80 kA	40 kA	16.2 W	0.31 kg



BTMF69V355

Type B4 690VAC/460VDC gG BTMF 2 hole

Catalog number	Item number	Rated voltage AC (IEC)	Rated voltage DC (IEC)	Rated current I _n	Pre-arcing I ² t	Clearing I ² t at Rated Voltage	Rated breaking capacity AC	Rated breaking capacity DC	Power dissipation at I _n	Weight
BTMF69V250	J1006626	690 V	460 V	250 A	190000 A ² s	700000 A ² s	80 kA	40 kA	24 W	0.62 kg
BTMF69V315	K1006627	690 V	460 V	315 A	270000 A ² s	1350000 A ² s	80 kA	40 kA	31 W	0.62 kg
BTMF69V355	L1006628	690 V	460 V	355 A	395000 A ² s	1975000 A ² s	80 kA	40 kA	32 W	0.62 kg
BTMF69V400	M1006629	690 V	460 V	400 A	505000 A ² s	2525000 A ² s	80 kA	40 kA	38 W	0.62 kg



BTM69V315

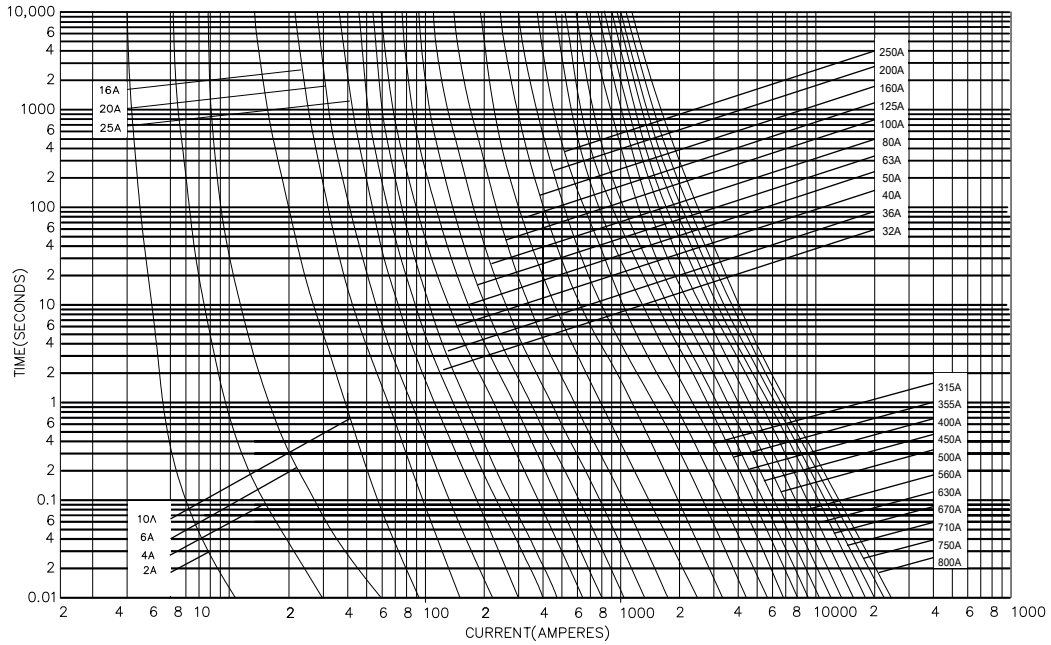
Type C1 690VAC/460VDC gG BTM 4 hole

Catalog number	Item number	Rated voltage AC (IEC)	Rated voltage DC (IEC)	Rated current I _n	Pre-arcing I ² t	Clearing I ² t at Rated Voltage	Rated breaking capacity AC	Rated breaking capacity DC	Power dissipation at I _n	Weight
BTM69V250	P1006631	690 V	460 V	250 A	190000 A ² s	700000 A ² s	80 kA	40 kA	24 W	0.69 kg
BTM69V315	R1006633	690 V	460 V	315 A	270000 A ² s	1350000 A ² s	80 kA	40 kA	31 W	0.69 kg
BTM69V355	S1006634	690 V	460 V	355 A	395000 A ² s	1975000 A ² s	80 kA	40 kA	32 W	0.69 kg
BTM69V400	W1006637	690 V	460 V	400 A	505000 A ² s	2525000 A ² s	80 kA	40 kA	38 W	0.69 kg

Central Bolted Tag fuse-links gG 690VAC/460VDC

TIME CURRENT CHARACTERISTIC CURVES

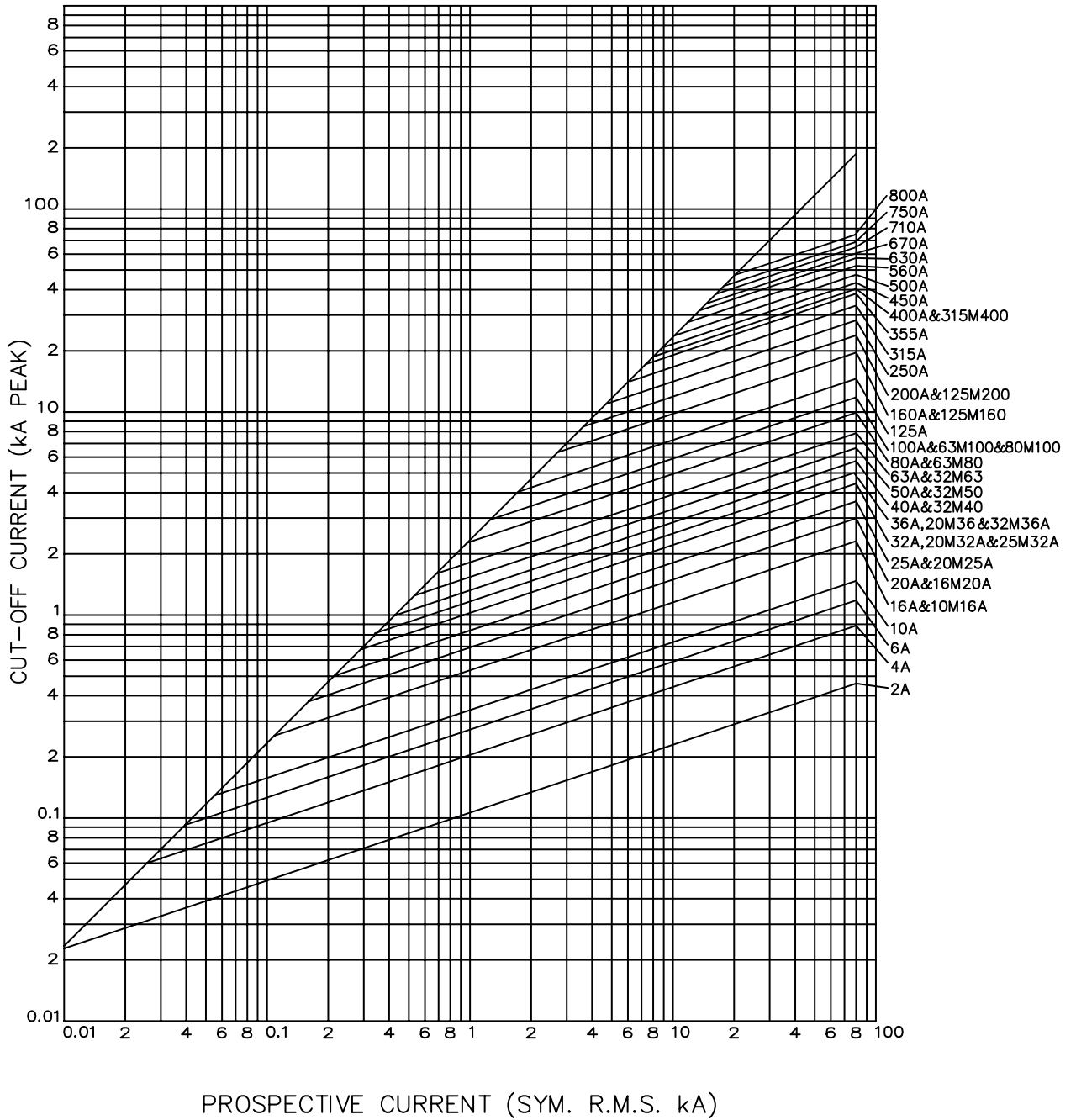
gG curves - 80 to 800 A - 690VAC / 460VDC



Central Bolted Tag fuse-links gG 690VAC/460VDC

CUT-OFF CURRENT CHARACTERISTIC

B and C Type - 690VAC / 460VDC



Central Bolted Tag fuse-links gG 690VAC/460VDC

DIMENSIONS

B1 BTC / B2 BTF / B3 BTFK / B4 BTMF / C1 BTM

Dimensions in mm

Fig.1

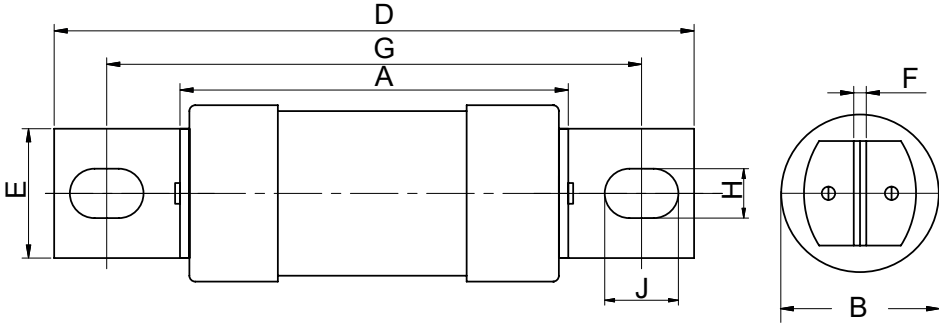
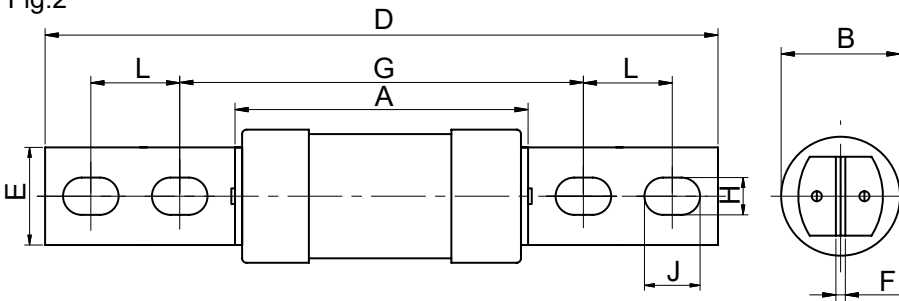


Fig.2



Dimensions in mm

Fig.	BS REF	Fuse Type	Current rating (A)	A MAX	B MAX	D MAX	E MAX	F NOM	G NOM	H NOM	J NOM	L NOM
1	B1	BTC	80, 100	57	26.5	137	19.5	3.2	111	8.7	14	25.4
1	B2	BTF	125, 160, 200	73	41.9	138	19.5	3.2	111	8.7	14	
1	B3	BTFK	250, 315	73	41.9	138	19.5	3.2	111	8.7	14	
1	B4	BTMF	250, 315, 355, 400	75	59.1	138	26	4.8	111	8.7	14	
2	C1	BTM	250, 315, 355, 400	75	59.1	212	26	4.8	133	10.3	16	