

Offset Tag fuse-links gG 415VAC/240VDC

LOW VOLTAGE IEC FUSES

BS FUSE-LINKS



The fuse complies with standard EN 60269-2 and standard BS 88 part 2. These fuses are designed for : “General purpose use” protection (gG type). This fuse range insures an excellent current limitation for all overloads on a large range of applications. Their size cannot allow exchange by other fuses of higher rating in their range. They are screwed into fuseholders or bolted directly onto busbars, or in fuse interrupters disconnectors.

TECHNICAL DATA OVERVIEW

Current Range In	36 to 200 A
Rated voltage AC (IEC)	415 V
Rated voltage DC (IEC)	240 V
Breaking capacity AC	80 kA
Breaking capacity DC	40 kA
Speed/Characteristic	gG
Body Material	Ceramic
BS type	BTIS, BTSDS, BTSS, BTSD, BTCP, BTFP

FEATURES & BENEFITS

- Excellent current limitation for all overloads

APPLICATIONS

- These fuses are designed for : “General purpose use” protection (gG type)

STANDARDS

- EN 60269-2
- BS88-2



Offset Tag fuse-links gG 415VAC/240VDC

PRODUCT RANGE



BTIS42V63

Type A3 415VAC/240VDC gG BTIS

Catalog number	Item number	Rated voltage AC (IEC)	Rated voltage DC (IEC)	Rated current I _n	Pre-arcing I ² t	Clearing I ² t at Rated Voltage	Rated breaking capacity AC	Rated breaking capacity DC	Power dissipation at I _n	Weight
BTIS42V36	M1045269	415 V	240 V	36 A	1000 A ² s	4000 A ² s	80 kA	40 kA	2.8 W	88.7 g
BTIS42V40	N1045270	415 V	240 V	40 A	1300 A ² s	4200 A ² s	80 kA	40 kA	3 W	88.7 g
BTIS42V50	P1045271	415 V	240 V	50 A	2600 A ² s	8750 A ² s	80 kA	40 kA	3.6 W	88.7 g
BTIS42V63	Q1045272	415 V	240 V	63 A	4000 A ² s	13900 A ² s	80 kA	40 kA	4.7 W	88.7 g
BTIS42V80	R1045273	415 V	240 V	80 A	8500 A ² s	38250 A ² s	80 kA	40 kA	6.5 W	88.7 g
BTIS42V100	S1045274	415 V	240 V	100 A	14000 A ² s	65000 A ² s	80 kA	40 kA	7.5 W	88.7 g
BTIS42V125	L1019186	415 V	240 V	125 A	28000 A ² s	78400 A ² s	80 kA	40 kA	11.3 W	88.7 g
BTIS42V160	M1019187	415 V	240 V	160 A	60000 A ² s	168000 A ² s	80 kA	40 kA	14 W	88.7 g



BTSDS42V125

Type A3 415VAC/240VDC gG BTSDS

Catalog number	Item number	Rated voltage AC (IEC)	Rated voltage DC (IEC)	Rated current I _n	Pre-arcing I ² t	Clearing I ² t at Rated Voltage	Rated breaking capacity AC	Rated breaking capacity DC	Power dissipation at I _n	Weight
BTSDS42V80	E1019180	415 V	240 V	80 A	8500 A ² s	38250 A ² s	80 kA	40 kA	6.5 W	59 g
BTSDS42V100	F1019181	415 V	240 V	100 A	14000 A ² s	65000 A ² s	80 kA	40 kA	7.5 W	59 g
BTSDS42V125	G1019182	415 V	240 V	125 A	16000 A ² s	70000 A ² s	80 kA	40 kA	11.5 W	59 g

Type A3C 415VAC/240VDC gG BTSS

Catalog number	Item number	Rated voltage AC (IEC)	Rated voltage DC (IEC)	Rated current I _n	Pre-arcing I ² t	Clearing I ² t at Rated Voltage	Rated breaking capacity AC	Rated breaking capacity DC	Power dissipation at I _n	Weight
BTSS42V63	V1019194	415 V	240 V	63 A	4000 A ² s	13900 A ² s	80 kA	40 kA	4.7 W	32.5 g

Type A4C 415VAC /240VDC gG BTSD

Catalog number	Item number	Rated voltage AC (IEC)	Rated voltage DC (IEC)	Rated current I _n	Pre-arcing I ² t	Clearing I ² t at Rated Voltage	Rated breaking capacity AC	Rated breaking capacity DC	Power dissipation at I _n	Weight
BTSD42V80	Y1019197	415 V	240 V	80 A	8500 A ² s	38250 A ² s	80 kA	40 kA	6.5 W	82 g
BTSD42V100	Z1019198	415 V	240 V	100 A	14000 A ² s	65000 A ² s	80 kA	40 kA	7.5 W	82 g
BTSD42V125	A1019199	415 V	240 V	125 A	16000 A ² s	70000 A ² s	80 kA	40 kA	11.5 W	82 g



BTCP42V100

Type A4C 415VAC gG BTCP

Catalog number	Item number	Rated voltage AC (IEC)	Rated voltage DC (IEC)	Rated current I _n	Pre-arcing I ² t	Clearing I ² t at Rated Voltage	Rated breaking capacity AC	Rated breaking capacity DC	Power dissipation at I _n	Weight
BTCP42V36	T1045275	415 V	240 V	36 A	1000 A ² s	4000 A ² s	80 kA	40 kA	2.8 W	83 g
BTCP42V40	Z1045280	415 V	240 V	40 A	1300 A ² s	4200 A ² s	80 kA	40 kA	3 W	83 g
BTCP42V50	S1045297	415 V	240 V	50 A	2600 A ² s	8750 A ² s	80 kA	40 kA	3.6 W	83 g
BTCP42V63	T1045298	415 V	240 V	63 A	4000 A ² s	13900 A ² s	80 kA	40 kA	4.7 W	83 g
BTCP42V80	V1045299	415 V	240 V	80 A	8500 A ² s	38250 A ² s	80 kA	40 kA	6.5 W	83 g
BTCP42V100	X1045301	415 V	240 V	100 A	14000 A ² s	65000 A ² s	80 kA	40 kA	7.5 W	83 g

Type A4C 415VAC/240VDC gG BTCP

Catalog number	Item number	Rated voltage AC (IEC)	Rated voltage DC (IEC)	Rated current I _n	Pre-arcing I ² t	Clearing I ² t at Rated Voltage	Rated breaking capacity AC	Rated breaking capacity DC	Power dissipation at I _n	Weight
BTCP42V125	W1019195	415 V	240 V	125 A	28000 A ² s	78400 A ² s	80 kA	40 kA	11.3 W	0.12 kg
BTCP42V160	X1019196	415 V	240 V	160 A	60000 A ² s	168000 A ² s	80 kA	40 kA	14 W	0.12 kg

Offset Tag fuse-links gG 415VAC/240VDC

PRODUCT RANGE



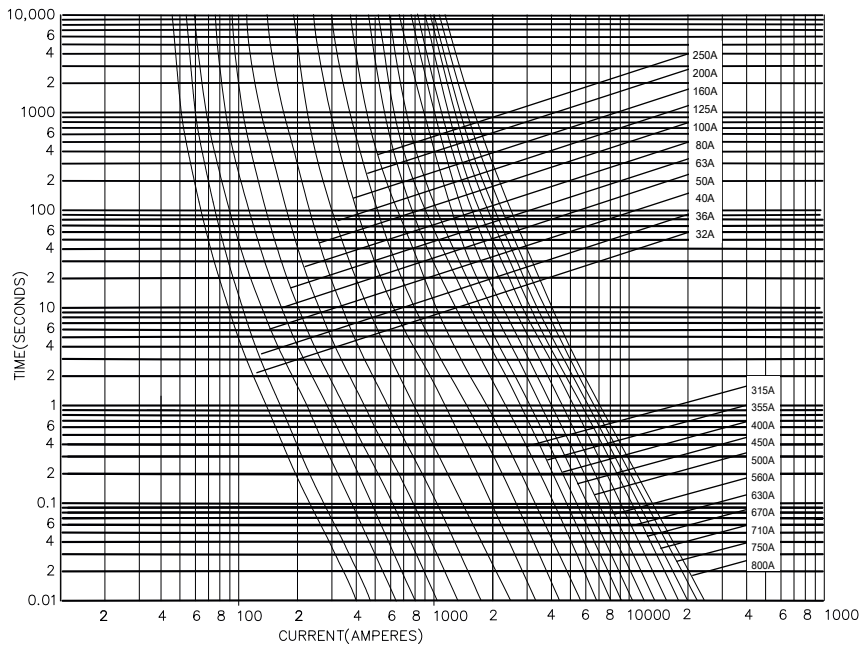
BTFP42V160

Type A4XC 415VAC/240VDC gG BTFP

Catalog number	Item number	Rated voltage AC (IEC)	Rated voltage DC (IEC)	Rated current I_n	Pre-arcing I^2t	Clearing I^2t at Rated Voltage	Rated breaking capacity AC	Rated breaking capacity DC	Power dissipation at I_n	Weight
BTFP42V125	D226300	415 V	240 V	125 A	17000 A ² s	70000 A ² s	80 kA	40 kA	9.2 W	0.15 kg
BTFP42V160	E226301	415 V	240 V	160 A	57000 A ² s	150000 A ² s	80 kA	40 kA	10.7 W	0.15 kg
BTFP42V200	F226302	415 V	240 V	200 A	105000 A ² s	293000 A ² s	80 kA	40 kA	16.2 W	0.15 kg

TIME CURRENT CHARACTERISTIC CURVES

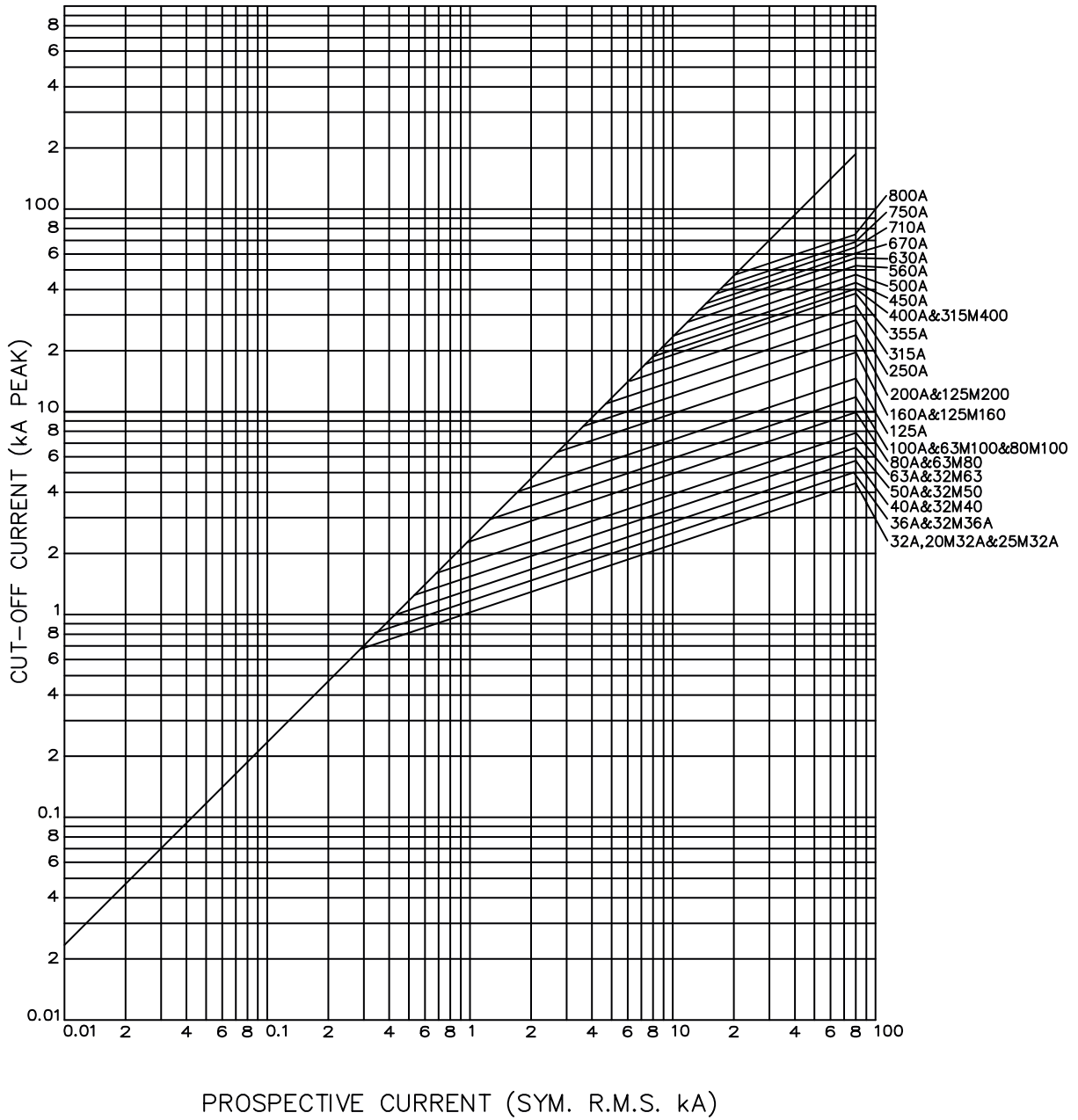
gG curves - 36 to 200 A - 415VAC / 240 VDC



Offset Tag fuse-links gG 415VAC/240VDC

CUT-OFF CURRENT CHARACTERISTIC

A Type - 415VAC / 240VDC



Offset Tag fuse-links gG 415VAC/240VDC

DIMENSIONS

A3 BTIS / A3C BTSS

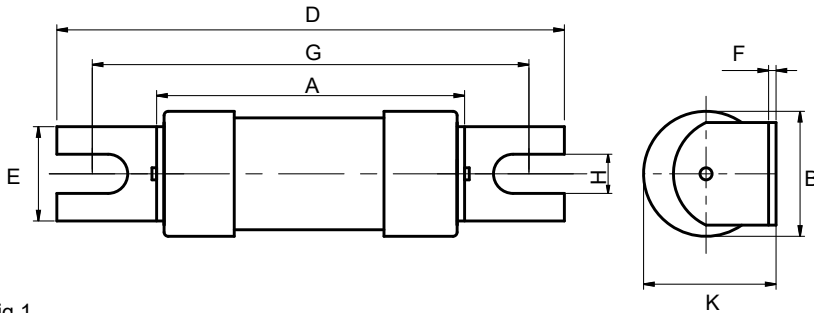


Fig.1

Dimensions in mm

A3 BTSDS / A4C BTSD / A4C BTCP / A4 BTCP / A4XC BTFP

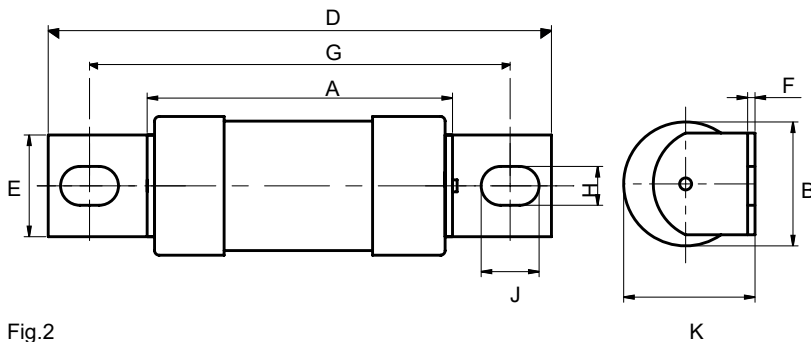


Fig.2

Dimensions in mm

Fig.	BS REF	Fuse Type	Current rating (A)	A MAX	B MAX	D MAX	E MAX	F NOM	G NOM	H NOM	J NOM	K MAX
1	A3	BTIS	36, 40, 50, 63, 80, 100	38.8	17.1	84	9.2	9.2	73	5.2	-	18.5
1	A3	BTIS	125, 160	57	26.9	88.5	13	13	73	5.5	-	28
1	A3C	BTSS	36, 40, 50, 63	38.8	17.1	84	9.2	9.2	73	5.2	-	18.5
2	A3	BTSDS	80, 100, 125	54.5	21	87	12.7	12.7	5.5	8	8	22.5
2	A4C	BTSD	80, 100, 125	58.5	21	110	14.3	14.3	8.7	11	11	25.4
2	A4C	BTCP	36, 40, 50, 63, 80, 100	58.5	21	110	14.3	14.3	8.7	11	11	25.4
2	A4	BTCP	125, 160	59.5	26.9	111	19.5	19.5	8.7	11	11	28.5
2	A4XC	BTFP	125, 160, 200	47	31	110	19	19	9	10	10	32