

# CAB P 302017



Sample image

**Order symbol :** CAB P 302017

**Product nr :** 8104303

**Description :** Polyester cabinet

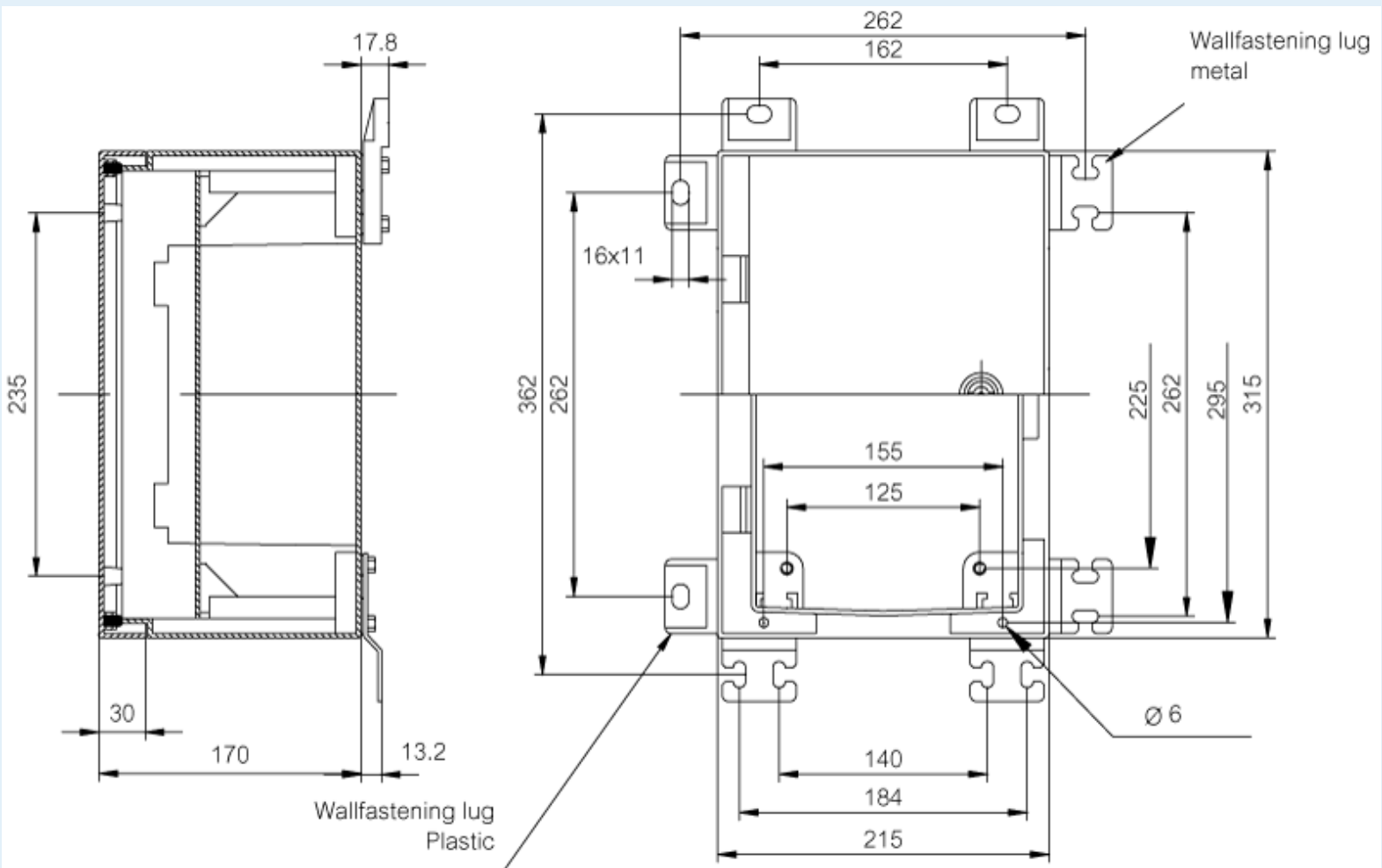
**Remarks :** Grey door

**EAN :** 6418074050007

**El. number :**

- Finland : 3424133
- Denmark : 8212018002
- Sweden : 2539817

**Including :** Cabinet base, door with PUR gasket, 3mm double bit lock(s) with transport and plastic key, screws for mounting plate/DIN-rail and wall fastening lugs with screws. Wall mounting screws not supplied.



**Dimensions :**

**Height**

**Width**

**Depth**

**Accessories :**

mm :	300	200	170
inch :	11.81	7.87	6.69

**Materials :**

Material :	Glass Fiber Reinforced Polyester
Base colour :	RAL_7035
Cover colour :	RAL 7035 -light grey
Gasket material :	Polyurethane

**Temperatures :**

Temperature °C (continuous) :	-40 ... 80
Temperature °F (continuous) :	-40 ... 175

FP 3020-2x6	Front Plate with DIN openings, for enclosures: (300 x 200 x 1)
MPP 3020	Mounting Plate, for enclosures: (300 x 200 x 2)
MB CAB	Swing door kit (187 x 145 x 29)
FP 3020-D	Swing door/Front plate, for enclosures: (300 x 200 x 1)
MF 3020	Mounting Frame with DIN-rails, for enclosures: (300 x 200 x 1)
MP 3020	Mounting plate, for enclosures: (300 x 200 x 2)
MPX 3020	Mounting Plate, for enclosures: (300 x 200 x 1)

**Ratings :**

Ingress protection (EN 60529):	IP66;
Impact Resistance (EN 62262):	IK10;
electrical_insulation :	Totally insulated
UV resistance :	UL 746C
Flammability Rating :	UL 94 HB
Glow Wire Test (IEC 695-2-1) °C :	960C