

# CAB ABS 403018 G



Sample image

**Order symbol:** CAB ABS 403018 G

**EAN:** 6418074020260

**Product nbr:** 8183350

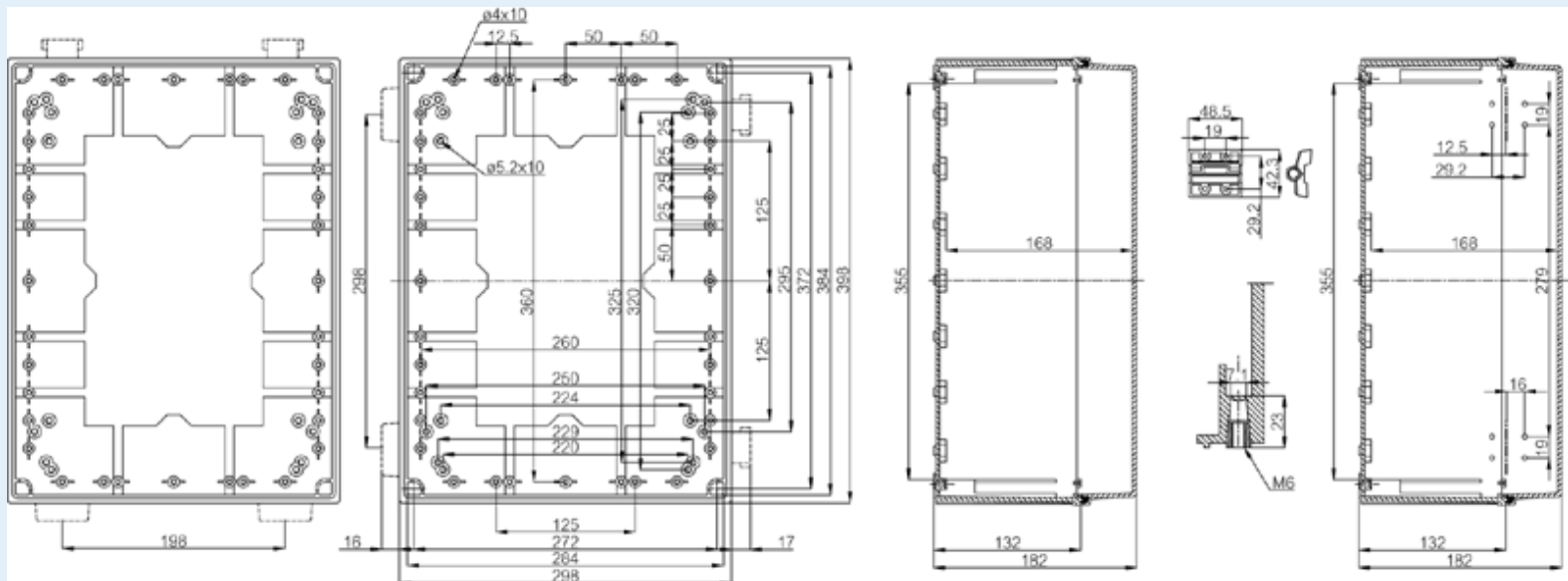
**El. number:**

**Description:** Opaque door

- Finland: 3424314
- Denmark: 8212020540
- Sweden: 2540071

**Remarks:** Latches on the long side

**Including:** Cabinet base, door with PUR gasket, latches, screws for mounting plate/DIN-rail and corner plugs.



Dimensions:	Height	Width	Depth
mm:	400	300	180
inch:	15.75	11.81	7.09

**Materials:**

**Accessories:**

DRF 43/44 DIN rail frame kit. for enclosures:

MB 12225 AL Swing door kit

EKIV 37 DIN-35 Mounting rail. for enclosures: (366 x 35 x 1)

Material:	ABS
Base colour:	RAL 7035 -light grey
Cover colour:	RAL 7035 -light grey
Gasket material:	Polyurethane

**Temperatures:**

Temperature °C (short term)::	-40 ... 80
Temperature °C (continuous):	-40 ... 60
Temperature °F (short term):	-40 ... 175
Temperature °F (continuous):	-40 ... 140

EKIV 27	DIN-35 Mounting rail. for enclosures: (266 x 35 x 1)
EKIV 43 PL	Back Panel. plastic. for enclosures: (370 x 270 x 2)
EKIV 43	Back Panel. for enclosures: (370 x 270 x 1)
FP A 43	Swing-out door/Front panel (aluminum). for enclosures: (268 x 368 x 1)

**Rating:**

Ingress protection (EN 60529):	IP65;
Impact Resistance (EN 62262):	IK08;
Electrical insulation:	Totally insulated
Halogen free (DIN/VDE 0472, Part 815):	1
UV resistance:	-
Flammability Rating:	UL 94 HB
Glow Wire Test (IEC 695-2-1) °C:	650 °C
NEMA Class	

**Certificates:**

Certificate FI 40854