

# ABS MH 125 G



Sample image

**Order symbol :** ABS MH 125 G

**Product nr :** 8784319

**Description :** Enclosure, ABS

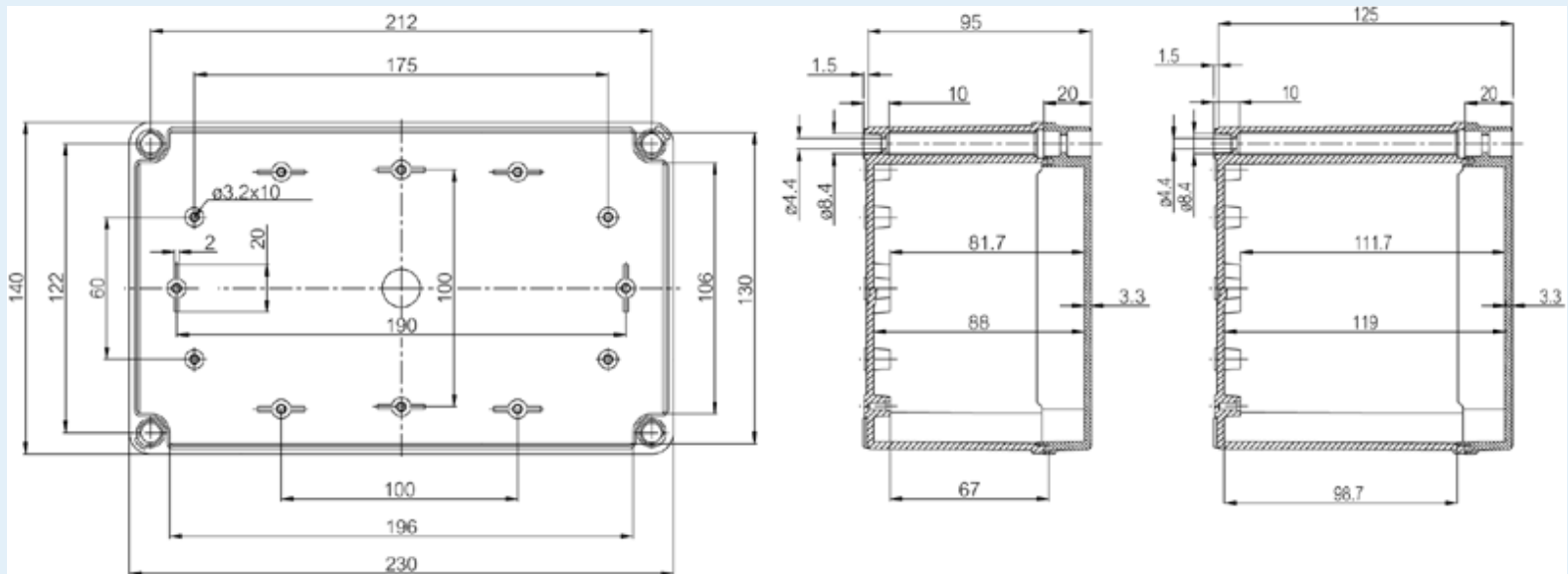
**Remarks :** Grey cover

**EAN :** 6418074054609

**El. number :**

- Finland : 3423470
- Denmark : 8212002050

**Including :** Base with screws for mounting plate/DIN-rail. cover with PUR gasket and polyamide cover screws.



**Dimensions :**

	Height	Width	Depth
mm :	230	140	125
inch :	9.06	5.51	4.92

**Materials :**

Material :	ABS
Base colour :	RAL 7035 -light grey
Cover colour :	RAL 7035 -light grey
Gasket material :	Polyurethane

**Accessories :**

CHM-3	DIN-35 Mounting rail, for enclosures: (110 x 35 x 7)
FM-3	DIN-35 Mounting rail, for enclosures: (35 x 200 x 1)
FP 22046	Wall fastening lug (4 pcs)
M-MP	Mounting plate, for enclosures: (185 x 94 x 1)

**Ratings :**

Ingress protection (EN 60529):	IP66; IP67;
--------------------------------	-------------

**Temperatures :**

Temperature °F (continuous) : -40 ... 140

Impact Resistance (EN 62262):

IK08;

electrical\_insulation :

Totally insulated

Halogen free (DIN/VDE 0472, Part 815) :

Yes

UV resistance :

-

Flammability Rating :

UL 94 HB

Glow Wire Test (IEC 695-2-1) °C :

650C

**Certificates :**

SGSFIMKO\_PICC\_pc