

## PSEN ml ba 1.1 unit

570424



Safety guard locking device PSENmlock, coded, with safety switch and actuator, with guard locking, with automatic reset, 8-pin M12 male connector, 0.23 m cable, single connection

## Technical details

### General data

Approval:	CE, UL/cUL, UKCA, SEV, FCC, IC
Sensor principle:	Transponder
Coding level to ISO 14119:	Low
Classification to EN 60947-5-3:	PDDb
Transponder coding:	coded
Reset type:	Automatic reset
Suitable for series connection:	no
unit type:	Unit

### Technical data

#### Electrical data

Supply voltage (V):	24 - 24 V
Type of supply voltage U1:	DC
Power consumption DC:	1 W

#### Inputs

Number of inputs:	2
DC voltage at input:	24 V DC

#### Semiconductor outputs

Number of OSSD outputs:	2
Number of sig. outputs:	1

Potential isolation S/C O:	No
S/C output short circuit proof:	Yes
Utilisation cat. to EN 60947-1:	DC-13
Environmental data	
Ambient temperature standard:	EN 60068-2-14
Ambient temperature:	0 - 0 °C
Storage temperature standard:	EN 60068-2-1/-2
Climatic suitability standard:	EN 60068-2-78
Humidity rating:	93 % r. h. at 40 °C
EMC to standard ...:	EN 55011: Class A, EN 60947-5-3, EN 61326-3-1
Vibration to standard ...:	EN 60068-2-6
Acc. shock to standard1:	30g
Overvoltage category:	III
Pollution degree clear.&creep.:	3
UL enclosure type:	type 1
Times	
Pulse length lock/unlock req.:	350 - 400 ms
Mechanical data	
Bend radius (when laying) K1:	5 x Ø
Escape release available:	No
Max. vertical offset:	+/-3.0 mm
Max. ang. offset round X axis:	+/-2.0 deg
Max. ang. offset round Y axis:	+/-2.5 deg
Max. ang. offset round Z axis:	+/-7.5 deg
Max. offset closing direction:	+/-2 mm
Type 1 actuator:	PSEN ml 1.1
Connection type:	M12, 8-pin male
Cable lines:	LiYY 8 x 0.25 mm <sup>2</sup>
Product material:	Zn, Aluminium, Galvanised steel, Stainless steel, Plastic

Height dimension:	217.2 mm
Width dimension:	40 mm
Depth dimension:	40 mm
Net weight:	1100 g
Gross weight:	1450 g
<b>Transponder</b>	
Operating frequency:	122 kHz - 128 kHz
<b>Environment</b>	
WEEE classification (08/2018):	5 devices (feed size < 50cm)
<b>Commercial data</b>	
Harmonized System Code:	85365019
UNSPSC 25:	39122205
EAN-Code:	4046548098211
ECLASS version:	ECLASS-13
ECLASS Reference Feature:	27272603
ETIM Version:	ETIM-9.0
ETIM Reference Group:	EG000026
ETIM Reference Feature:	EC002593
Volume:	0 dm3

## Optional accessories



540346

PSEN cable M12-8sf M12-8sm, 1m



540347

PSEN cable M12-8sf M12-8sm, 1,5m



540326

PSEN cable axial M12 8-pole 30m



540320

PSEN cable axial M12 8-pole 5m



540342

PSEN cable M12-8sf M12-8sm, 10m



540321

PSEN cable axial M12 8-pole 10m



540343

PSEN cable M12-8sf M12-8sm, 20m



540344

PSEN cable M12-8sf M12-8sm, 30m



540345

PSEN cable M12-8sf M12-8sm, 0,5m












570499

PSEN screw set bracket sliding door



570475

PSEN ml escape release cordset 4,0m

	570497	PSEN ml door handle swinging door 80
	570498	PSEN screw set bracket swinging door
	570473	PSEN ml escape release cordset 3,0m
	570495	PSEN ml door handle sliding door
	570474	PSEN ml escape release cordset 3,5m
	570496	PSEN ml door handle swinging door 70
	570471	PSEN ml escape release cordset 2,0m
	570493	PSEN ml bracket swinging door 70
	570472	PSEN ml escape release cordset 2,5m



570494

PSEN ml bracket swinging door 80



C1000059

Adapter/ML/M12-5SMX/M12-5SMX/M12-8SFX/XX



540333

PSEN cable M12-8sf, 20m



570468

PSEN ml escape release cordset 1,0m



570469

PSEN ml escape release cordset 1,25m



570466

PSEN ml escape release cordset 0,5m



570467

PSEN ml escape release cordset 0,75m



570484

PSEN ml actuator 10° adapter



570462

PSEN ml escape release extension



570485

PSEN ml actuator center ring



570463

PSEN ml escape release cordset 1,5m hd1



540319

PSEN cable axial M12 8-pole 3m



570460

PSEN ml escape release



570461

PSEN ml auxiliary release hd1



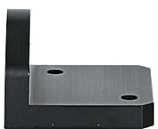
570491

PSEN ml / PDP67 Y junction PR



570470

PSEN ml escape release cordset 1,5m



570492

PSEN ml bracket sliding door



570490

PSEN ml mounting plate



540340

PSEN cable M12-8sf M12-8sm, 2m

---



540341

PSEN cable M12-8sf M12-8sm, 5m

---