

## UR20-8DI-P-3W-HD

**Weidmüller Interface GmbH & Co. KG**

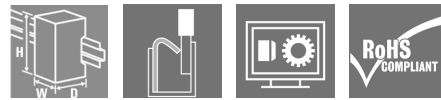
Klingenbergstraße 26

D-32758 Detmold

Germany

[www.weidmueller.com](http://www.weidmueller.com)

### Product image



### Digital input modules P- or N-switching; Reverse polarity protection, up to 3-wire +FE

Digital input modules from Weidmüller are available in different versions and are used primarily to receive binary control signals from sensors, transmitters, switches or proximity switches. Thanks to their flexible design, they will satisfy your need for well co-ordinated project planning with reserve potential.

All modules are available with 4, 8 or 16 inputs and comply fully with IEC 61131-2. The digital input modules are available as P- or N-switching variant. The digital inputs are for Type 1 and Type 3 sensors in accordance with the standard. With a maximum input frequency of up to 1 kHz, they are used in many different applications. The variant for PLC interface units enables rapid cabling to the proven Weidmüller interface sub-assemblies using system cables. This ensures rapid incorporation into your overall system. Two modules with a timestamp function are able to capture binary signals and to provide a timestamp in 1  $\mu$ s resolution. Further solutions are possible with

the module UR20-4DI-2W-230V-AC which works with accurate current up to 230V as an input signal.

The module electronics supply the connected sensors from the input current path ( $U_{IN}$ ).

### General ordering data

Version	Remote I/O module, IP20, 8-channel, Digital signals, Input
Order No.	<a href="#">1315190000</a>
Type	UR20-8DI-P-3W-HD
GTIN (EAN)	4050118118230
Qty.	1 pc(s).

## UR20-8DI-P-3W-HD

Weidmüller Interface GmbH &amp; Co. KG

Klingenbergstraße 26

D-32758 Detmold

Germany

www.weidmueller.com

## Technical data

## Dimensions and weights

Depth	76 mm	Depth (inches)	2.992 inch
Height	120 mm	Height (inches)	4.724 inch
Mounting dimension - height	128 mm	Net weight	66 g
Width	11.5 mm	Width (inches)	0.453 inch

## Temperatures

Storage temperature	-40 °C ... +85 °C	Operating temperature	-20 °C ... +60 °C
---------------------	-------------------	-----------------------	-------------------

## Environmental Product Compliance

REACH SVHC	Lead 7439-92-1
------------	----------------

## digital inputs

Individual channel diagnosis	No	
Input filter	configurable	
Input voltage, high	> 11 V	
Input voltage, low	< 5 V	
Module diagnosis	Yes	
Number of digital inputs	8	
Reverse polarity protection	Yes	
Sensor connection	2-wire, 3-wire	
Sensor supply	Yes	
Sensor supply	nominal	750 mA
	min.	0 mA
	max.	8,000 mA
Type	Types 1 and 3, EN 61131-2	

## Connection data

Type of connection	PUSH IN	Wire connection cross section, finely stranded, max.	0.35 mm <sup>2</sup>
Wire connection cross-section, finely stranded, min.	0.14 mm <sup>2</sup>	Wire cross-section, finely stranded, max. (AWG)	AWG 22
Wire cross-section, finely stranded, min. (AWG)	AWG 26	Wire cross-section, solid, max.	0.35 mm <sup>2</sup>
Wire cross-section, solid, max. (AWG)	AWG 22	Wire cross-section, solid, min.	0.14 mm <sup>2</sup>
Wire cross-section, solid, min. (AWG)	AWG 26		

## General data

Air humidity (operation)	10% to 95%, non-condensing as per DIN EN 61131-2
Air humidity (storage)	10% to 95%, non-condensing as per DIN EN 61131-2
Air humidity (transport)	10% to 95%, non-condensing as per DIN EN 61131-2
Air pressure (operation)	≥ 795 hPa (height ≤ 2000 m) as per DIN EN 61131-2
Air pressure (storage)	1013 hPa (height 0 m) to 700 hPa (height 3000 m) as per DIN EN 61131-2
Air pressure (transport)	1013 hPa (height 0 m) to 700 hPa (height 3000 m) as per DIN EN 61131-2
Pollution severity	2
Rail	TS 35

**UR20-8DI-P-3W-HD**

**Weidmüller Interface GmbH & Co. KG**  
 Klingenbergstraße 26  
 D-32758 Detmold  
 Germany

www.weidmueller.com

**Technical data**

Restricted area	Type of restricted area	thermal	
	Positive expansion	Y coordinate	160 mm
		X coordinate	43 mm
		Z coordinate	85 mm
	Negative expansion	Y coordinate	-40 mm
X coordinate		-28 mm	
Z coordinate		0 mm	
Shock	15 g over 11 ms, half sinus wave, acc. to IEC 60068-2-27		
Surge voltage category	II		
Test voltage	500 V		
UL 94 flammability rating	V-0		
Vibration resistance	5 Hz ≤ f ≤ 8.4 Hz: 3.5-mm amplitude as per IEC 60068-2-6, 8.4 Hz ≤ f ≤ 150 Hz: 1 g acceleration as per IEC 60068-2-6		

**Power supply**

Current consumption from I <sub>IN</sub> (power segment of the field bus coupler), typ.	8 mA		
Current consumption from I <sub>IN</sub> (power segment of the fieldbus coupler), typ.	nominal	8 mA	
	min.	8 mA	
	max.	8 mA	
Current consumption from I <sub>IN</sub> (the respective power segment)	< 22 mA + sensor feed		
Current consumption from I <sub>IN</sub> (the respective power segment)	min.	22 mA	
	nominal	22 mA	
	max.	22 mA	
Reverse polarity protection	Yes		
Voltage supply	24 V DC +20 %/ -15 %, via the system bus		

**RS interface**

Connection type	PUSH IN	Individual channel diagnosis	No
Module diagnosis	Yes		

**Serial inputs**

Connection type	PUSH IN	Individual channel diagnosis	No
Module diagnosis	Yes		

**System data**

Connection type	PUSH IN	Diagnostic data	1 Byte
Field bus protocol	CANopen, DeviceNet, EtherCAT, EtherNet/IP, Modbus/TCP, PROFINET IRT, PROFIBUS DP-V1, POWERLINK	Galvanic isolation	DC 500 V between current paths
Interface	u-remote system bus	Module type	Digital input module
Possible connection	3-wire, Single-conductor, 2-wire	Process data	8 Byte
Transmission speed of system bus, max.	48 Mbit		

**Classifications**

ETIM 6.0	EC001597	ETIM 7.0	EC001597
eClass 9.0	27-24-26-02	eClass 9.1	27-24-26-02
eClass 10.0	27-24-26-02	eClass 11.0	27242602

**UR20-8DI-P-3W-HD**

**Weidmüller Interface GmbH & Co. KG**  
 Klingenbergstraße 26  
 D-32758 Detmold  
 Germany

www.weidmueller.com

**Technical data**

**Important note**

Product information Note: Please order connector (1469340000) separately

**Approvals**

Approvals



ROHS Conform  
 UL File Number Search E141197

**Downloads**

Approval/Certificate/Document of Conformity	<a href="#">Declaration of Conformity</a> <a href="#">Lloyds Register certificate</a> <a href="#">DNV/GL certificate</a> <a href="#">ABS certificate</a> <a href="#">RINA certificate</a> <a href="#">Bureau Veritas - Type Approval Certificate</a> <a href="#">PRS (Polish Register of Shipping)</a> <a href="#">NIPPON KAIJI KYOKAI Certificate</a>
Engineering Data	<a href="#">STEP</a>
Engineering Data	<a href="#">EPLAN, WSCAD, Zuken E3.S</a>
User Documentation	<a href="#">MAN U-REMOTE_DE</a> <a href="#">MAN U-REMOTE_EN</a>

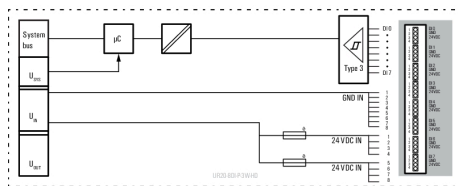
**UR20-8DI-P-3W-HD**

**Weidmüller Interface GmbH & Co. KG**  
 Klängenbergstraße 26  
 D-32758 Detmold  
 Germany

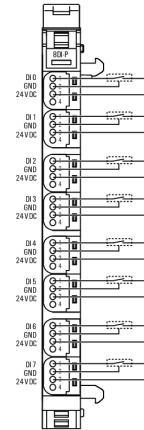
www.weidmueller.com

**Drawings**

**Block diagram**



**Connection diagram**



**Miscellaneous**



Note: Please order connector separately