



# Gears & Fuse Gears

## Semiconductor Fuses AC+DC Ferrule Fuse Holders MSC10, USM

### MSC 10 Fuse Holder

#### MSC 10 fuse holder - no accessories $I_{th}$ max. 32A - $U_n$ 690V

for 10x38 fuses without striker, with or without indicator light



Nb. of Poles	Model without blown fuse indicator light		Model with blown fuse indicator light		Nb Mod	Pckg
	Ref.number	Cat. Number	Ref. Number	Cat. Number		
N	Q218215	MSC8/10N			1	12
1	Q216674	MSC101	W219784	MSC101I	1	12
1+N	C212085	MSC101N	D232602	MSC101NI	2	6
2	E213122	MSC102	K215151	MSC102I	2	6
3	M215659	MSC103	R226611	MSC103I	3	4
3+N	E217193	MSC103N	E232603	MSC103NI	4	3
4	F218735	MSC104			4	3

#### MSC 10 fuse holder Phase + Neutral (1 mod.) $I_{th}$ max. 32A - $U_n$ 690V

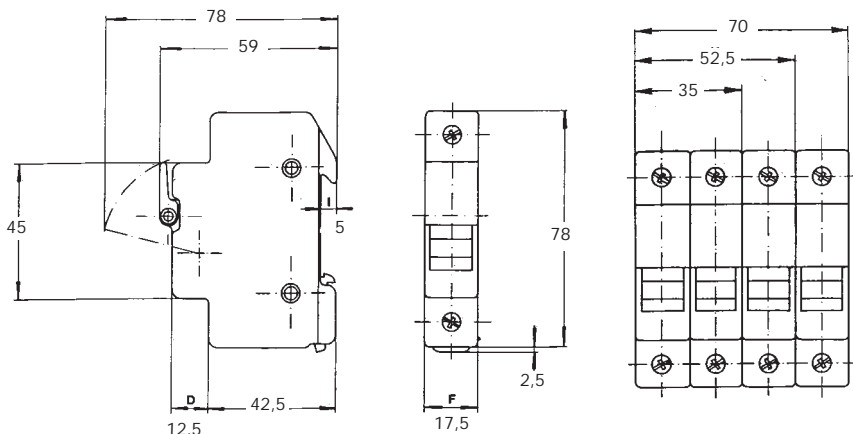


Nb. of Poles	Model without blown fuse indicator light		Model with blown fuse indicator light		Nb Mod	Pckg
	Ref.number	Cat. Number	Ref. Number	Cat. Number		
1+N	Y201317	MSC101N1M	C211050	MSC101N1MI	1	12
3+N	S218217	MSC103N3M	S226612	MSC103N3MI	3	4

Assembly accessories	Ref. Number	Cat. Number	Pckg
2-pole pin	G215125	MSC810PAK2	10*
3-pole pin	Q216145	MSC810PAK3	10*
4-pole pin	A217166	MSC810PCK4	10*

\* 10 per bag

### Dimensions



- Direct mounting on symmetrical DIN rail
- Indicator light (120/690V)
- Wiring cross sections:
  - single-pole: 1 x 16mm<sup>2</sup>
  - single-pole + neutral: 1 x 10 mm<sup>2</sup>
- Insulated to IP 20 standard
- Single-pole weight
  - 10x38 ; 63 g
  - 10x38 - Ph + N1M ; 68 g



## Semiconductor Fuses AC+DC Ferrule FuseHolders MSC10, USM

### MSCC and USM 10 Fuse Holder

#### USM fuse holders

**I<sub>th</sub> max. 32A - Un 800VAC - 1000VDC**

for 10 x 38 Midget fuses (1-1/2" x 13/32")  
with or without indicator light

Nb. of Poles	Model without blown fuse indicator light		Model with blown fuse indicator light		Nb Mod	Pckg
	Ref. number	Cat. Number	Ref. Number	Cat. Number		
N	W201131	USN				12
1	Y213944	USM1	L214462	USM1I	1	12
2	N217523	USM2	Z218039	USM2I	2	6
3	C218548	USM3	Y219073	USM3I	3	4
3+N	H222049	USM3N	P219594	USM3NI	4	3
4	R222793	USM4	F223312	USM4I	4	3

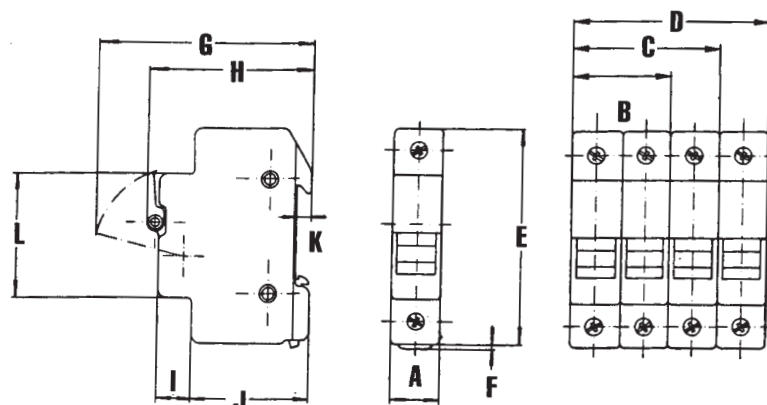


Assembly accessories	Ref. Number	Cat. Number	Pckg
2-pole pin	F201646	USPTH2	10*
3-pole pin	C205047	USPTH3	10*
4-pole pin	P211383	USPTH4	10*



### Dimensions

DIMENSION	mm	In
A	17.5	0.69
B	35.0	1.38
C	52.5	2.07
D	70.0	2.76
E	78.0	3.07
F	2.5	0.10
G	78.0	3.07
H	59.0	2.32
I	12.5	0.49
J	42.5	1.67
K	5.0	0.20
L	45.0	1.77



\* 10 per bag

\* With the indicator light a blown fuse can be quickly located if power is still on

- Direct mounting on symmetrical DIN rail
- Single-pole weight  
USM ; 63g