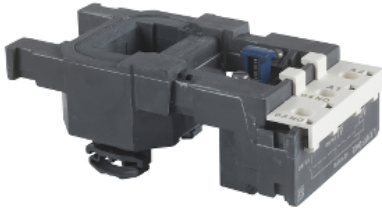


# Product datasheet

Specifications



## TeSys F - contactor coil - LX1FF - 440V AC 60 Hz

LX1FF360

**!** To be discontinued on: 31 December 2028

EAN Code : 3389110083125

**!** Discontinued

### Main

Range	TeSys
Product or component type	Contactor coil
Device short name	LX1FF
Range compatibility	TeSys (TeSys F) LC1F contactor
Product compatibility	LC1F115 LC1F150
Control circuit type	AC at 60 Hz
[Uc] control circuit voltage	440 V AC 60 Hz
Inductance of closed circuit	9.21 H
Average resistance	72.6 Ohm at 20 °C
Operating time	23...35 ms closing 5...15 ms opening
Mechanical durability	10 Mcycles
Maximum operating rate	2400 cyc/h 55 °C

### Complementary

Coil technology	Without built-in suppressor module
Control circuit voltage limits	Drop-out: 0.35...0.55 Uc 50/60 Hz (at 55 °C) Operational: 0.85...1.1 Uc 50/60 Hz (at 55 °C)
Inrush power in VA	660 VA 60 Hz cos phi 0.3 (at 20 °C)
Hold-in power consumption in VA	55 VA 60 Hz cos phi 0.3 (at 20 °C)
Heat dissipation	12...16 W at 60 Hz

### Environment

Ambient air temperature for operation	-5...55 °C
Net weight	0.43 kg

### Packing Units

Unit Type of Package 1	PCE
------------------------	-----

Number of Units in Package 1	1
Package 1 Height	7.2 cm
Package 1 Width	10.5 cm
Package 1 Length	17.7 cm
Package 1 Weight	501.0 g
Unit Type of Package 2	S03
Number of Units in Package 2	14
Package 2 Height	30.0 cm
Package 2 Width	30.0 cm
Package 2 Length	40.0 cm
Package 2 Weight	7.727 kg

## Offer Sustainability

Sustainable offer status	Green Premium product
REACH Regulation	<a href="#">REACH Declaration</a>
REACH free of SVHC	Yes
EU RoHS Directive	Pro-active compliance (Product out of EU RoHS legal scope) <a href="#">EU RoHS Declaration</a>
Toxic heavy metal free	Yes
Mercury free	Yes
China RoHS Regulation	<a href="#">China RoHS declaration</a>
RoHS exemption information	Yes
Environmental Disclosure	<a href="#">Product Environmental Profile</a>
Circularity Profile	<a href="#">End of Life Information</a>

## Contractual warranty

Warranty	18 months
----------	-----------

## Recommended replacement(s)