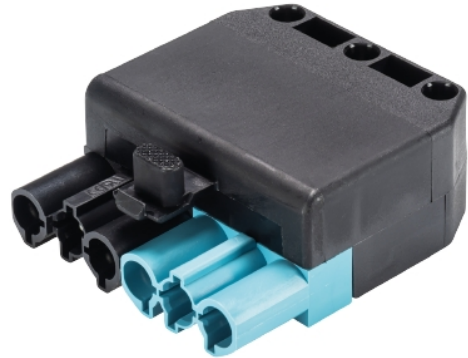


Data sheet

Commercial Art.No.: 92.968.0158.1

connector GST18I6S S1NZR1V SWPB

gesis® CLASSIC connector, number of poles 6, male, connection type screw connection, rated voltage 250 V, rated current 20 A, cable diameter 10 - 12 mm, color of coding/ contact carrier pastel blue/black



Commercial Art.No.	92.968.0158.1
EAN	4015573645332
Order Unit	1

certificates / approvals



Technical data

general

rated current	20 A
rated voltage	250 V
rated impulse voltage	4 kV
strain relief	yes
pollution degree	2
mechanical coding	code 1
lockable	self-locking (unlocking by hand)
color of coding/ contact carrier	pastel blue/black
marking of poles	3, 2, 1, N, PE, L
color of housing inclusive strain relief	black

connection data

cable diameter max.	12 mm
cable diameter min.	10 mm
connection cross section solid mm ² max.	4 mm ²
connection cross section solid mm ² min.	0.75 mm ²
connection cross section fine stranded mm ² max.	4 mm ²
connection cross section fine stranded mm ² min.	0.75 mm ²
terminations per pole	1

model

model	male
connection type	screw connection
degree of protection (IP)	IP20

material

housing material	polyamide
halogen free	yes
contact material	CuZn
fire load	0.219 kWh/St
insulation components continuous temperature	100 °C
surface finish	tin-plated

dimensions

length	62.5 mm
width	56.4 mm
height	25 mm

classification

ECLASS 11	
ECLASS 8.1	27440605
ETIM 9.0	EC002560
ETIM 8.0	EC002560
ETIM 7.0	EC002560
ETIM 6.0	EC002560
ETIM 5.0	EC002560
ETIM 4.0	EC002560

product compliance

ROHS conformity status	compliant/exempted
ROHS exceptions	III-6(c)
REACH-SVHC conformity status	Duty-To-Declare
REACH-SVHC substances	Lead
REACH-SVHC CAS numbers	7439-92-1