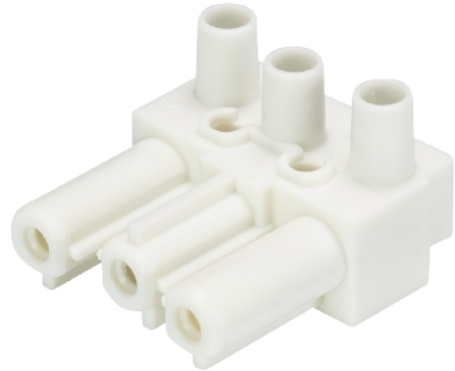


## Data sheet

Commercial Art.No.: 92.031.3258.0

device connector GST18I3S B1 WS

gesis® CLASSIC device connector, built-in component, single screw connection, number of poles 3, model female, connection type screw connection, rated voltage 250 V, rated current 20 A, color of coding/ contact carrier white



Commercial Art.No.	92.031.3258.0
EAN	4015573236837
Order Unit	1

certificates / approvals



## Technical data

### general

rated current	20 A
rated voltage	250 V
pollution degree	2
mechanical coding	code 1
rated impulse voltage	4 kV
lockable	self-locking (unlocking by tool)
color of coding/ contact carrier	white
marking of poles	L, N, PE

### connection data

connection cross section solid mm <sup>2</sup> max.	4 mm <sup>2</sup>
connection cross section solid mm <sup>2</sup> min.	0.75 mm <sup>2</sup>
connection cross section fine stranded mm <sup>2</sup> max.	4 mm <sup>2</sup>
connection cross section fine stranded mm <sup>2</sup> min.	0.75 mm <sup>2</sup>
terminations per pole	1
wire strip length	7 mm

### model

model	female
connection type	screw connection
angle of plug	straight
degree of protection (IP)	IP20
remark to type of connection	fine stranded wires 4 mm <sup>2</sup> only without ferrules
built-in component	built-in component/connector

### material

housing material	polyamide
halogen free	yes
contact material	CuZn
fire load	0.036 kWh/St
insulation components continuous temperature	100 °C
surface finish	tin-plated

**dimensions**

length	31.5 mm
width	28.2 mm
height	19.5 mm

**classification**

ECLASS 11	
ECLASS 8.1	27440602
ETIM 9.0	EC002566
ETIM 8.0	EC002566
ETIM 7.0	EC002566
ETIM 6.0	EC002566
ETIM 5.0	EC002566
ETIM 4.0	EC002566

**product compliance**

ROHS conformity status	compliant/exempted
ROHS exceptions	III-6(c)
REACH-SVHC conformity status	Duty-To-Declare
REACH-SVHC substances	Lead
REACH-SVHC CAS numbers	7439-92-1