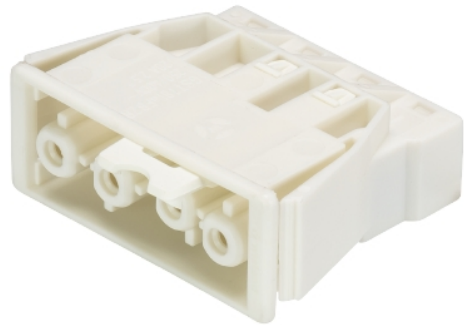


Data sheet

Commercial Art.No.: 92.041.9658.0

device connector GST18I4F B2 R V WS

gesis® CLASSIC device connector, snap-in, housing material thickness: 0.5 - 1.5 mm, number of poles 4, model female, connection type spring clamp connection, rated voltage 250 V / 400 V, rated current 20 A, color of coding/ contact carrier white



Commercial Art.No.	92.041.9658.0
EAN	4015573399556
Order Unit	1

certificates / approvals



Technical data

general

rated current	20 A
rated voltage	250 V / 400 V
pollution degree	2
mechanical coding	code 1
rated impulse voltage	4 kV
lockable	self-locking (unlocking by tool)
color of coding/ contact carrier	white
marking of poles	2, N, PE, 1

connection data

connection cross section solid mm ² max.	2.5 mm ²
connection cross section solid mm ² min.	0.5 mm ²
connection cross section fine stranded mm ² max.	1.5 mm ²
connection cross section fine stranded mm ² min.	0.5 mm ²
terminations per pole	2
wire strip length	9 mm

model

model	female
connection type	spring clamp connection
angle of plug	straight
degree of protection (IP)	IP20
remark to type of connection	fine stranded and stranded conductors require cable end sleeve
thickness of housings (electrical device) 2	0.5 mm
thickness of housings (electrical device)	1.5 mm
built-in component	snap-in

material

housing material	polyamide
halogen free	yes
contact material	CuZn
fire load	0.083 kWh/St
insulation components continuous temperature	100 °C
surface finish	tin-plated

dimensions

length	38 mm
width	42.5 mm
height	18.5 mm

classification

ECLASS 11	
ECLASS 8.1	27440602
ETIM 9.0	EC002566
ETIM 8.0	EC002566
ETIM 7.0	EC002566
ETIM 6.0	EC002566
ETIM 5.0	EC002566
ETIM 4.0	EC002566

product compliance

ROHS conformity status	compliant/exempted
ROHS exceptions	III-6(c)
REACH-SVHC conformity status	Duty-To-Declare
REACH-SVHC substances	Lead
REACH-SVHC CAS numbers	7439-92-1