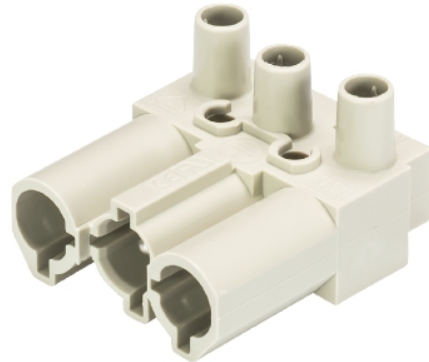


Data sheet

Commercial Art.No.: 92.032.3458.0

device connector GST18I3S S1 GR01

gesis® CLASSIC device connector, built-in component, single screw connection, number of poles 3, model male, connection type screw connection, rated voltage 250 V, rated current 20 A, color of coding/ contact carrier pebble grey



| | |
|--------------------|---------------|
| Commercial Art.No. | 92.032.3458.0 |
| EAN | 4015573486614 |
| Order Unit | 1 |

certificates / approvals



Technical data

general

| | |
|----------------------------------|----------------------------------|
| rated current | 20 A |
| rated voltage | 250 V |
| pollution degree | 2 |
| mechanical coding | code 2 |
| rated impulse voltage | 4 kV |
| lockable | self-locking (unlocking by tool) |
| color of coding/ contact carrier | pebble grey |
| marking of poles | L, N, PE |

connection data

| | |
|---|----------------------|
| connection cross section solid mm ² max. | 4 mm ² |
| connection cross section solid mm ² min. | 0.75 mm ² |
| connection cross section fine stranded mm ² max. | 4 mm ² |
| connection cross section fine stranded mm ² min. | 0.75 mm ² |
| terminations per pole | 1 |
| wire strip length | 7 mm |

model

| | |
|------------------------------|---|
| model | male |
| connection type | screw connection |
| angle of plug | straight |
| degree of protection (IP) | IP20 |
| remark to type of connection | fine stranded wires 4 mm ² only without ferrules |
| built-in component | built-in component/connector |

material

| | |
|--|--------------|
| housing material | polyamide |
| halogen free | yes |
| contact material | CuZn |
| fire load | 0.039 kWh/St |
| insulation components continuous temperature | 100 °C |
| surface finish | tin-plated |

dimensions

| | |
|--------|---------|
| length | 31.5 mm |
| width | 28.2 mm |
| height | 19.5 mm |

classification

| | |
|------------|----------|
| ECLASS 11 | |
| ECLASS 8.1 | 27440602 |
| ETIM 9.0 | EC002566 |
| ETIM 8.0 | EC002566 |
| ETIM 7.0 | EC002566 |
| ETIM 6.0 | EC002566 |
| ETIM 5.0 | EC002566 |
| ETIM 4.0 | EC002566 |

product compliance

| | |
|------------------------------|--------------------|
| ROHS conformity status | compliant/exempted |
| ROHS exceptions | III-6(c) |
| REACH-SVHC conformity status | Duty-To-Declare |
| REACH-SVHC substances | Lead |
| REACH-SVHC CAS numbers | 7439-92-1 |