



Assembly and installation instruction

EN

Installation instruction:

Assembly and installation should only be carried out by a suitably qualified person. The applicable national regulations must be complied with.

Control elements

- Fine adjustment
- Setting of time range
- Selection of the desired function
- Status indication

U/t: LED green
Supply voltage applied
R: LED yellow
Relay is active

Electrical connection

A1-A2: Supply voltage

24-48V DC

24-240V AC, 50/60 Hz

B1: Control input

Activation by wire jumper on A1

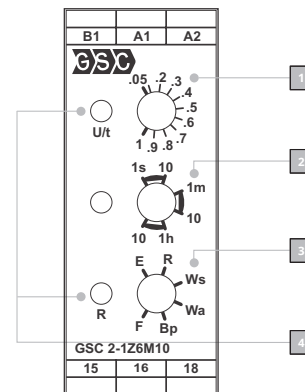
15-16-18: Output relay

AC1 5A/250V

Functions

- E** ON Delay
- R** OFF delay
- Ws** Single shot leading edge with control contact
- Wu** Single shot leading edge voltage controlled (function selector must be set on Ws + fixed jumper A1-B1)
- Wa** Single shot trailing edge with control contact
- Bp** Flasher pause first
- F** T-FlipFlop (Toggle)

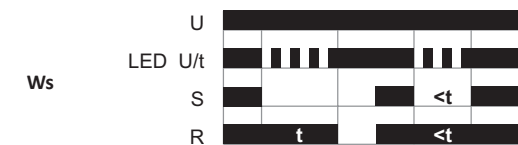
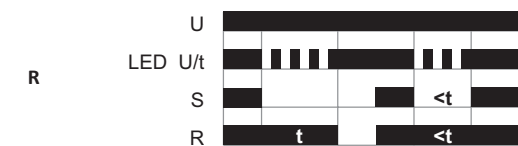
Control elements



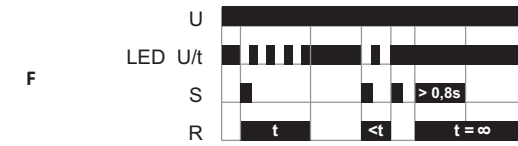
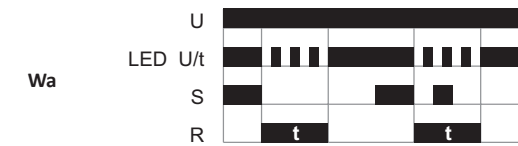
Product picture



Functions

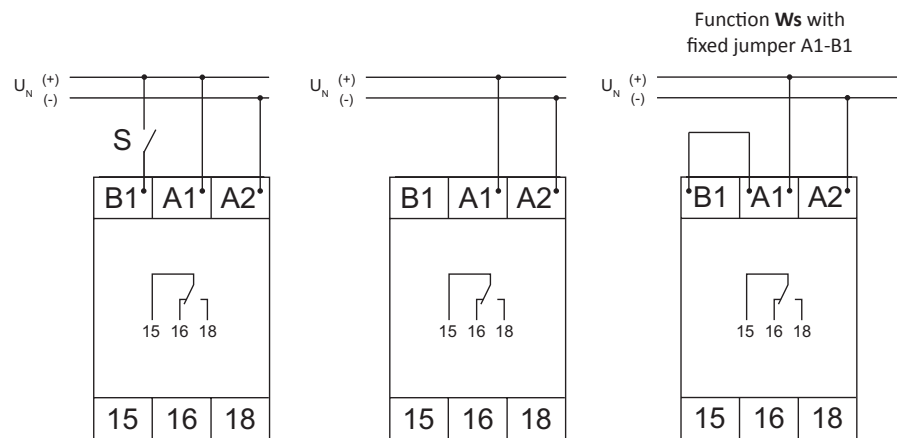


Function Ws with fixed jumper A1-B1

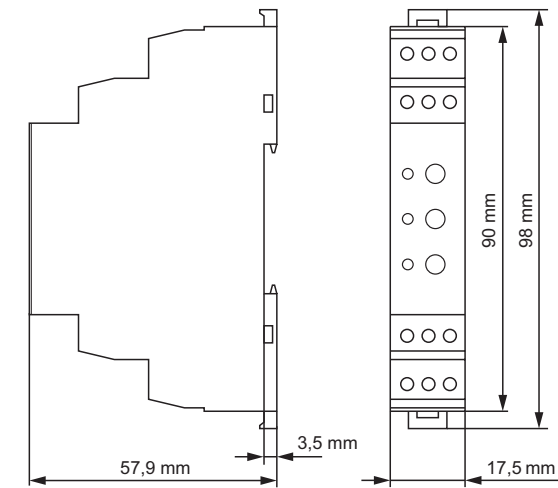




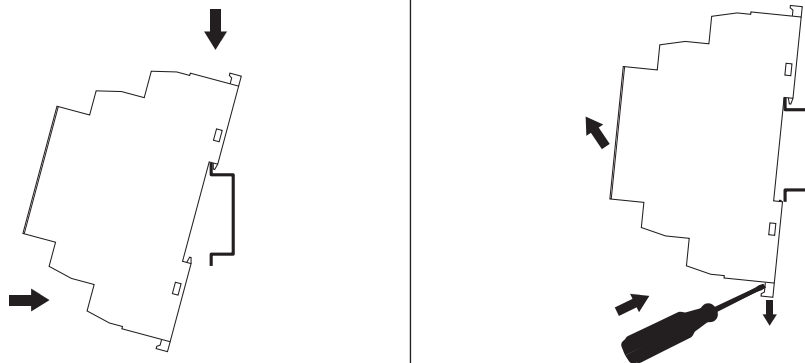
Connection diagram



Dimensions



Assembly



Screw terminals

1 x 0,25 ... 2,5 mm ² 23 ... 14 AWG	1 x 0,25 ... 2,5 mm ² 2 x 0,25 ... 1,5 mm ² 23 ... 14 AWG	1 x 0,25 ... 2,5 mm ² 2 x 0,25 ... 1,5 mm ² 23 ... 14 AWG	
	Suitable for Phillips PH1	Stripping length	7 mm
		Nm	0.5
		lb-in	4.5