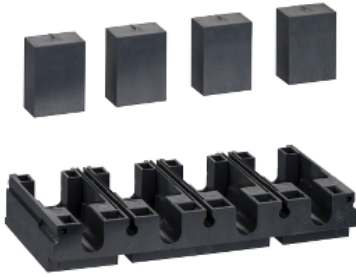


# Product datasheet

Specifications



## connection adapter for plug in base, ComPact NSX 100/160/250, 4 poles

Local distributor code: 391352467 LV429307

EAN Code : 3606480021497

### Main

Product or component type	Connection adapter
Accessory / separate part category	Connection accessory
Range compatibility	ComPact (ComPact NSX100) ComPact (ComPact NSX160) ComPact (ComPact NSX250) ComPact Compact NSX100 DC ComPact Compact NSX160 DC ComPact Compact NSX250 DC
Poles description	4P

### Complementary

Mounting mode	Plug-in
[In] rated current	250 A

### Packing Units

Unit Type of Package 1	PCE
Number of Units in Package 1	1
Package 1 Height	2.600 cm
Package 1 Width	7.200 cm
Package 1 Length	16.300 cm
Package 1 Weight	110.000 g
Unit Type of Package 2	S04
Number of Units in Package 2	40
Package 2 Height	30.000 cm
Package 2 Width	40.000 cm
Package 2 Length	60.000 cm
Package 2 Weight	5.030 kg
Unit Type of Package 3	P12
Number of Units in Package 3	160
Package 3 Height	41.500 cm
Package 3 Width	80.000 cm

Package 3 Length	120.000 cm
Package 3 Weight	31.744 kg

## Offer Sustainability

Sustainable offer status	Green Premium product
REACH Regulation	<a href="#">REACH Declaration</a>
EU RoHS Directive	Pro-active compliance (Product out of EU RoHS legal scope) <a href="#">EU RoHS Declaration</a>
Mercury free	Yes
China RoHS Regulation	<a href="#">China RoHS declaration</a> Product out of China RoHS scope. Substance declaration for your information
RoHS exemption information	Yes
Environmental Disclosure	<a href="#">Product Environmental Profile</a>

## Contractual warranty

Warranty	18 months
----------	-----------

## Recommended replacement(s)