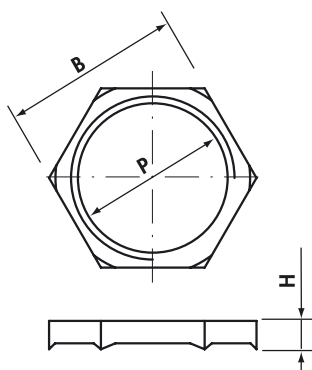


**EMC LOCKNUTS NICKEL PLATED BRASS  
SERIES 20N3**

**Metric thread M 1.5 pitch CEI EN 60423**

Ref. Nickel Plated Brass	P	B Spanner (mm)	H (mm)	Quantity Box/Bag
20N3M12N	M12X1,5	15	4,1	1000/100
20N3M16N	M16X1,5	19	4,2	1000/100
20N3M20N	M20X1,5	24	4,2	500/100
20N3M25N	M25X1,5	30	4,8	400/100
20N3M32N	M32X1,5	36	5,4	200/100
20N3M40N	M40X1,5	46	6,2	100/50
20N3M50N	M50X1,5	60	7	50/50
20N3M63N	M63X1,5	70	7	50/25

**Description:**

EMC locknuts have serrated teeth to maintain electrical contact through paint or surface coatings, a feature which also enhances vibration resistance.

**Technical details:**

MATERIAL : NICKEL PLATED BRASS (CUZN 40 PB 3)  
 NICKEL PLATING THICKNESS : 2 ÷ 4 µm  
 TEMPERATURE RANGE : -30°C to +120°C (CONTINUOUS)

**Cembre SpA**

Via Serenissima, 9 - 25135 Brescia (Italy)  
 Tel.: +39 030 36921 - Fax: +39 030 3365766  
 Web: [www.cembre.com](http://www.cembre.com) - Email: [info@cembre.com](mailto:info@cembre.com)