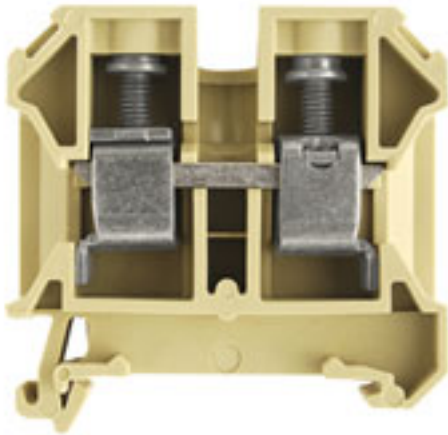


**SAK Series
SAK 16/35 PA**

Weidmüller Interface GmbH & Co. KG
 Klingenbergstraße 16
 D-32758 Detmold
 Germany
 Fon: +49 5231 1429-0
 Fax: +49 5231 14292083
 www.weidmueller.com



Klippon® Connect with clamping yoke Technology

The high reliability and variety of designs of the terminal blocks with clamping yoke connections make planning easier and optimises operational safety. Klippon® Connect provides a proven response to a range of different requirements.

General ordering data

Type	SAK 16/35 PA
Order No.	0380660000
Version	SAK Series, Feed-through terminal, Rated cross-section: 16 mm ² , Screw connection, Beige
GTIN (EAN)	4008190118204
Qty.	50 pc(s).

**SAK Series
SAK 16/35 PA**

Weidmüller Interface GmbH & Co. KG
 Klingenbergstraße 16
 D-32758 Detmold
 Germany
 Fon: +49 5231 1429-0
 Fax: +49 5231 14292083
 www.weidmueller.com

Technical data
Dimensions and weights

Width	12 mm	Width (inches)	0.472 inch
Height	50 mm	Height (inches)	1.969 inch
Depth	57.5 mm	Depth (inches)	2.264 inch
Net weight	26.28 g		

Temperatures

Continuous operating temp., min.	-50 °C	Continuous operating temp., max.	100 °C
----------------------------------	--------	----------------------------------	--------

Material data

Material	PA 66	Colour	beige / yellow
UL 94 flammability rating	V-2		

Rating data IECEx/ATEX

Certificate No. (ATEX)	KEMA97ATEX1798U	ATEX certificate	IECEXKEM06.0014U
ATEX certificate	KEMA97ATEX1798U_e.pdf	Certificate No. (IECEX)	IECEXKEM06.0014U
IEC Ex certificate	IECEXKEM06.0014U_e.pdf	Max. voltage (ATEX)	690 V
Current (ATEX)	66 A	Wire cross section max. (ATEX)	16 mm ²
Max. voltage (IECEX)	690 V	Current (IECEX)	66 A
Wire cross section max. (IECEX)	16 mm ²	Voltage, cross-connection	CrossConnectionGuide.pdf
Operating temperature range	For operating temperature range see EC Design Test Certificate / IEC Ex-Certificate of Conformity	Marking EN 60079-7	
Ex 2014/34/EU label	II 2 G D		Ex e II

System specifications

Version	Screw connection, for screwable cross-connection, One end without connector	End cover plate required	Yes
Number of potentials	1	Number of levels	1
No. of clamping points per level	2	Number of potentials per tier	1
Levels cross-connected internally	No	PE connection	No
Mounting rail	TS 35	N-function	No
PE function	No	PEN function	No

Additional technical data

Explosion-tested version	No	Number of similar terminals	1
Open sides	right	Type of mounting	Snap-on

CSA rating data

Certificate No. (CSA)	154685-1501714	Current size C (CSA)	87 A
Voltage size C (CSA)	600 V	Wire cross section max. (CSA)	4 AWG
Wire cross section min. (CSA)	14 AWG		

Conductors for clamping (additional connection)

Conductor cross-section, flexible plus plastic collar DIN 46228/1, further connection, max. 16 mm²

SAK Series
SAK 16/35 PA

Weidmüller Interface GmbH & Co. KG
 Klingenbergstraße 16
 D-32758 Detmold
 Germany
 Fon: +49 5231 1429-0
 Fax: +49 5231 14292083
 www.weidmueller.com

Technical data
Conductors for clamping (rated connection)

Blade size	1.0 x 5.5 mm	Clamping range, rated connection, max.	16 mm ²
Clamping range, rated connection, min.	2.5 mm ²	Clamping screw	M 4
Connection direction	on side	Cross-section for connected conductor, finely stranded with wire-end ferrules and plastic collars DIN 46228/4, rated connection, min.	4 mm ²
Gauge to IEC 60947-1	B6	Number of connections	2
Stripping length	15 mm	Tightening torque, max.	2.4 Nm
Tightening torque, min.	2 Nm	Torque level with DMS electric screwdriver	4
Twin wire-end ferrules, max.	10 mm ²	Twin wire-end ferrules, min.	1.5 mm ²
Type of connection	Screw connection	Wire connection cross section AWG, max.	AWG 6
Wire connection cross section AWG, min.	AWG 12	Wire connection cross section, finely stranded with wire-end ferrules DIN 46228/1, rated connection, max.	16 mm ²
Wire connection cross section, finely stranded with wire-end ferrules DIN 46228/1, rated connection, min.	4 mm ²	Wire connection cross section, finely stranded, max.	16 mm ²
Wire connection cross section, solid core max. rated connection	16 mm ²	Wire connection cross section, solid core, min. rated connection	2.5 mm ²
Wire connection cross section, stranded, rated connection, max.	16 mm ²	Wire connection cross section, stranded, rated connection, min.	4 mm ²
Wire connection cross-section, finely stranded with wire-end ferrules and plastic collars DIN 46228/4, rated connection, max.	16 mm ²	Wire connection cross-section, finely stranded, min.	4 mm ²

Rating data

Rated cross-section	16 mm ²	Rated voltage	1,000 V
Rated current	76 A	Current at maximum wires	76 A
Standards	IEC 60947-7-1	Volume resistance according to IEC 60947-7-x	0.42 mΩ
Rated impulse withstand voltage	8 kV	Pollution severity	3

UL rating data

Certificate No. (UR)	E60693	Conductor size Factory wiring max. (UR)	4 AWG
Conductor size Factory wiring min. (UR)	12 AWG	Conductor size Field wiring max. (UR)	4 AWG
Conductor size Field wiring min. (UR)	12 AWG	Current size C (UR)	80 A
Voltage size C (UR)	600 V		

Classifications

ETIM 3.0	EC000897	ETIM 4.0	EC000897
ETIM 5.0	EC000897	ETIM 6.0	EC000897
UNSPSC	30-21-18-11	eClass 5.1	27-14-11-20
eClass 6.2	27-14-11-20	eClass 7.1	27-14-11-20
eClass 8.1	27-14-11-20	eClass 9.0	27-14-11-20
eClass 9.1	27-14-11-20		

Product information

Descriptive text ordering data	If QIs are aligned side by side, then a TW/AP must be used.
Descriptive text technical data	Twin wire end ferrules ZH 2.5 - ZH 16 can be used.

Creation date July 12, 2017 11:06:09 AM CEST

Data sheet**SAK Series
SAK 16/35 PA**

Weidmüller Interface GmbH & Co. KG
Klingenbergstraße 16
D-32758 Detmold
Germany
Fon: +49 5231 1429-0
Fax: +49 5231 14292083
www.weidmueller.com

Technical data**Approvals**

Approvals



ROHS Conform

Downloads

Approval/Certificate/Document of Conformity	CFAT_SAK_16.pdf DE_PT1301_20160414_023_ISSUE01.pdf
Engineering Data	EPLAN, WSCAD

Safety noteSafety notice [Safety Information](#)