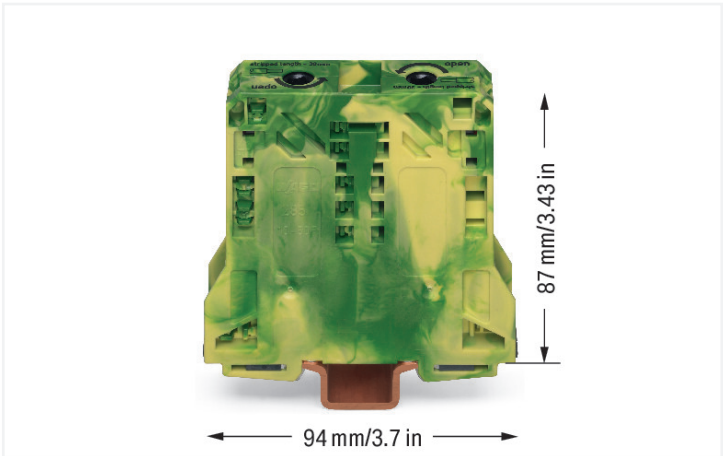


**Data Sheet | Item Number: 285-157**  
2-conductor ground terminal block; 50 mm²; lateral marker slots; only for DIN 35 x 15 rail; 2.3 mm thick; copper; POWER CAGE CLAMP; 50,00 mm²; green-yellow



<https://www.wago.com/285-157>



Color: green-yellow



**Electrical data**

| Ratings per IEC/EN |                  |
|--------------------|------------------|
| Ratings per        | IEC/EN 60947-7-2 |

**Connection data**

|                            |   |
|----------------------------|---|
| Connection points          | 2 |
| Total number of potentials | 1 |
| Number of levels           | 1 |
| Number of jumper slots     | 2 |

| Connection 1                                      |                               |
|---|-------------------------------|
| Connection technology                             | POWER CAGE CLAMP              |
| Actuation type                                    | T-wrench; 8 mm                |
| Connectable conductor materials                   | Copper                        |
| Solid conductor                                   | 10 ... 50 mm² / 8 ... 1/0 AWG |
| Stranded conductor                                | 10 ... 50 mm² / 8 ... 1/0 AWG |
| Fine-stranded conductor                           | 10 ... 70 mm² / 8 ... 2/0 AWG |
| Fine-stranded conductor; with insulated ferrule   | 10 ... 50 mm² / 8 ... 1/0 AWG |
| Fine-stranded conductor; with uninsulated ferrule | 10 ... 50 mm² / 8 ... 1/0 AWG |
| Strip length                                      | 30 mm / 1.18 inches           |
| Wiring direction                                  | Side-entry wiring             |

**Physical data**

|                                   |                      |
|-----------------------------------|----------------------|
| Width                             | 20 mm / 0.787 inches |
| Height                            | 94 mm / 3.701 inches |
| Depth from upper-edge of DIN-rail | 87 mm / 3.425 inches |



| Mechanical data |   |  |
|-----------------|---|--|
| Mounting type   | DIN-rail 35 x 15  |  |
| Mounting (note) | only suitable for DIN 35 x 15 copper rail; 2.3 mm thick |  |
| Marking level   | Side marking  |  |

| Material data               |  |  |
|-----------------------------|--|--|
| Note (material data)        | <a href="#">Information on material specifications can be found here</a> |  |
| Color                       | green-yellow   |  |
| Material group              | I  |  |
| Insulation material         | Polyamide (PA66)   |  |
| Flammability class per UL94 | V0   |  |
| Fire load                   | 1.986 MJ   |  |
| Weight                      | 186.5 g  |  |

| Environmental requirements       |                 |  |
|----------------------------------|-----------------|--|
| Processing temperature           | -35 ... +85 °C  |  |
| Continuous operating temperature | -60 ... +105 °C |  |

| Commercial data       |                                  |  |
|-----------------------|----------------------------------|--|
| Product Group         | 1 (Rail Mounted Terminal Blocks) |  |
| eCl@ss 10.0           | 27-14-11-41                      |  |
| eCl@ss 9.0            | 27-14-11-41                      |  |
| ETIM 8.0              | EC000901                         |  |
| ETIM 7.0              | EC000901                         |  |
| PU (SPU)              | 5 pcs                            |  |
| Packaging type        | Box                              |  |
| Country of origin     | PL                               |  |
| GTIN                  | 4045454507435                    |  |
| Customs tariff number | 85369010000                      |  |

| Approvals / Certificates                                |               |   |          |          |                  |   |   |   |   |   |   |
|---|---------------|---|----------|----------|------------------|---|---|---|---|---|---|
| General approvals                                       |               | Declarations of conformity and manufacturer's declarations  |          |          |                  |   |   |   |   |   |   |
|   |               |   |          |          |                  |   |   |   |   |   |   |
| Approval  | Standard      | Certificate Name  |          |          |                  |   |   |   |   |   |   |
| CCA<br>DEKRA Certification B.V.                         | EN 60947      | NTR NL-7707   |          |          |                  |   |   |   |   |   |   |
| CSA<br>DEKRA Certification B.V.                         | C22.2 No. 158 | 154112  |          |          |                  |   |   |   |   |   |   |
| KEMA/KEUR<br>DEKRA Certification B.V.                   | EN 60947      | 71-105562   |          |          |                  |   |   |   |   |   |   |
| UL<br>Underwriters Laboratories Inc.                    | UL 1059       | E45172  |          |          |                  |   |   |   |   |   |   |
|   |               | <table><tr><th>Approval</th><th>Standard</th><th>Certificate Name</th></tr><tr><td>EU-Declaration of Confor-<br/>mity<br/>WAGO GmbH &amp; Co. KG</td><td>-</td><td>-</td></tr><tr><td>UK-Declaration of Confor-<br/>mity<br/>WAGO GmbH &amp; Co. KG</td><td>-</td><td>-</td></tr></table> | Approval | Standard | Certificate Name | EU-Declaration of Confor-<br>mity<br>WAGO GmbH & Co. KG | - | - | UK-Declaration of Confor-<br>mity<br>WAGO GmbH & Co. KG | - | - |
| Approval  | Standard      | Certificate Name  |          |          |                  |   |   |   |   |   |   |
| EU-Declaration of Confor-<br>mity<br>WAGO GmbH & Co. KG | -             | -   |          |          |                  |   |   |   |   |   |   |
| UK-Declaration of Confor-<br>mity<br>WAGO GmbH & Co. KG | -             | -   |          |          |                  |   |   |   |   |   |   |



Approvals for hazardous areas



| Approval                                 | Standard | Certificate Name                          |
|--|----------|---|
| AEx<br>Underwriters Laboratories<br>Inc. | -        | E185892 (AEx eb II C resp.<br>Ex eb II C) |

Downloads

Environmental Product Compliance

| Compliance Search                           |
|---|
| Environmental Product<br>Compliance 285-157 |




Documentation

| Additional Information |
|------------------------|
| Technical Section      |

pdf  
2142.18 KB



| Bid Text |            |                 |   |
|----------|------------|-----------------|---|
| 285-157  | 19.02.2019 | xml<br>3.13 KB  | <a href="#"></a> |
| 285-157  | 04.01.2018 | doc<br>23.50 KB | <a href="#"></a> |



CAD/CAE-Data

| CAD data             |
|----------------------|
| 2D/3D Models 285-157 |



| CAE data                     |
|------------------------------|
| EPLAN Data Portal<br>285-157 |
| WSCAD Universe<br>285-157    |
| ZUKEN Portal 285-157         |



1 Compatible Products

1.1 Optional Accessories

1.1.1 Cover

1.1.1.1 Cover



**Item No.: 285-441**  
Finger guard; touchproof cover protects unused conductor entries and jumper slots; for 50 mm² high-current tbs; yellow

1.1.2 DIN-rail

1.1.2.1 Mounting accessories



**Item No.: 210-198**  
Copper carrier rail; 35 x 15 mm; 2.3 mm thick; 2 m long; unslotted; according to EN 60715; copper-colored

1.1.3 Ferrule

1.1.3.1 Ferrule



**Item No.: 216-289**  
Ferrule; Sleeve for 10 mm² / AWG 8; insulated; electro-tin plated; electrolytic copper; gastight crimped; acc. to DIN 46228, Part 4/09.90; red



**Item No.: 216-209**  
Ferrule; Sleeve for 10 mm² / AWG 8; insulated; electro-tin plated; red



**Item No.: 216-109**  
Ferrule; Sleeve for 10 mm² / AWG 8; uninsulated; electro-tin plated



**Item No.: 216-210**  
Ferrule; Sleeve for 16 mm² / AWG 6; insulated; electro-tin plated; electrolytic copper; gastight crimped; acc. to DIN 46228, Part 4/09.90; blue



**Item No.: 216-110**  
Ferrule; Sleeve for 16 mm² / AWG 6; uninsulated; electro-tin plated; brown metallic



**Item No.: 216-414**  
Ferrule; Sleeve for 35 mm² / AWG 2; uninsulated; electro-tin plated; electrolytic copper; gastight crimped; acc. to DIN 46228, Part 1/08.92; silver-colored



**Item No.: 216-424**  
Ferrule; Sleeve for 35 mm² / AWG 2; uninsulated; electro-tin plated; electrolytic copper; gastight crimped; acc. to DIN 46228, Part 1/08.92; silver-colored



**Item No.: 216-425**  
Ferrule; Sleeve for 50 mm² / AWG 1; uninsulated; electro-tin plated; electrolytic copper; gastight crimped; acc. to DIN 46228, Part 1/08.92



**Item No.: 216-435**  
Ferrule; Sleeve for 50 mm² / AWG 1; uninsulated; electro-tin plated; electrolytic copper; gastight crimped; acc. to DIN 46228, Part 1/08.92

1.1.4 Installation

1.1.4.1 Mounting accessories



**Item No.: 285-448**  
Fixing element; for 50 mm² high-current terminal blocks; orange



**Item No.: 249-197**  
Screwless end stop; 14 mm wide; for DIN-rail 35 x 15 and 35 x 7.5; gray

1.1.5 Jumper



1.1.5.1 Jumper



Item No.: 285-450  
Jumper; insulated; gray

1.1.6 Marking

1.1.6.1 Group marker carrier



Item No.: 249-105  
Group marker carrier; gray

1.1.6.2 Marker



Item No.: 793-5501/000-006  
WMB marking card; as card; for terminal block width 5 - 17.5 mm; stretchable 5 - 5.2 mm; plain; snap-on type; blue



Item No.: 793-5501/000-014  
WMB marking card; as card; for terminal block width 5 - 17.5 mm; stretchable 5 - 5.2 mm; plain; snap-on type; brown



Item No.: 793-5501/000-007  
WMB marking card; as card; for terminal block width 5 - 17.5 mm; stretchable 5 - 5.2 mm; plain; snap-on type; gray



Item No.: 793-5501/000-023  
WMB marking card; as card; for terminal block width 5 - 17.5 mm; stretchable 5 - 5.2 mm; plain; snap-on type; green



Item No.: 793-5501/000-017  
WMB marking card; as card; for terminal block width 5 - 17.5 mm; stretchable 5 - 5.2 mm; plain; snap-on type; light green



Item No.: 793-5501/000-012  
WMB marking card; as card; for terminal block width 5 - 17.5 mm; stretchable 5 - 5.2 mm; plain; snap-on type; orange



Item No.: 793-5501/000-005  
WMB marking card; as card; for terminal block width 5 - 17.5 mm; stretchable 5 - 5.2 mm; plain; snap-on type; red



Item No.: 793-5501/000-024  
WMB marking card; as card; for terminal block width 5 - 17.5 mm; stretchable 5 - 5.2 mm; plain; snap-on type; violet



Item No.: 793-5501  
WMB marking card; as card; for terminal block width 5 - 17.5 mm; stretchable 5 - 5.2 mm; plain; snap-on type; white



Item No.: 793-5501/000-002  
WMB marking card; as card; for terminal block width 5 - 17.5 mm; stretchable 5 - 5.2 mm; plain; snap-on type; yellow



Item No.: 793-501/000-006  
WMB marking card; as card; not stretchable; plain; snap-on type; blue



Item No.: 793-501/000-007  
WMB marking card; as card; not stretchable; plain; snap-on type; gray



Item No.: 793-501/000-023  
WMB marking card; as card; not stretchable; plain; snap-on type; green



Item No.: 793-501/000-017  
WMB marking card; as card; not stretchable; plain; snap-on type; light green



Item No.: 793-501/000-012  
WMB marking card; as card; not stretchable; plain; snap-on type; orange



Item No.: 793-501/000-005  
WMB marking card; as card; not stretchable; plain; snap-on type; red



Item No.: 793-501/000-024  
WMB marking card; as card; not stretchable; plain; snap-on type; violet



Item No.: 793-501  
WMB marking card; as card; not stretchable; plain; snap-on type; white



Item No.: 793-501/000-002  
WMB marking card; as card; not stretchable; plain; snap-on type; yellow



Item No.: 2009-115/000-006  
WMB-Inline; for Smart Printer; 1500 pieces on roll; stretchable 5 - 5.2 mm; plain; snap-on type; blue



Item No.: 2009-115/000-007  
WMB-Inline; for Smart Printer; 1500 pieces on roll; stretchable 5 - 5.2 mm; plain; snap-on type; gray



Item No.: 2009-115/000-023  
WMB-Inline; for Smart Printer; 1500 pieces on roll; stretchable 5 - 5.2 mm; plain; snap-on type; green



Item No.: 2009-115/000-017  
WMB-Inline; for Smart Printer; 1500 pieces on roll; stretchable 5 - 5.2 mm; plain; snap-on type; light green



Item No.: 2009-115/000-012  
WMB-Inline; for Smart Printer; 1500 pieces on roll; stretchable 5 - 5.2 mm; plain; snap-on type; orange



Item No.: 2009-115/000-005  
WMB-Inline; for Smart Printer; 1500 pieces on roll; stretchable 5 - 5.2 mm; plain; snap-on type; red



Item No.: 2009-115/000-024  
WMB-Inline; for Smart Printer; 1500 pieces on roll; stretchable 5 - 5.2 mm; plain; snap-on type; violet



Item No.: 2009-115  
WMB-Inline; for Smart Printer; 1500 pieces on roll; stretchable 5 - 5.2 mm; plain; snap-on type; white



Item No.: 2009-115/000-002  
WMB-Inline; for Smart Printer; 1500 pieces on roll; stretchable 5 - 5.2 mm; plain; snap-on type; yellow



1.1.6.3 Marker carrier



Item No.: 285-442  
Adaptor; gray

1.1.7 Power tap

1.1.7.1 Power tap



Item No.: 285-447  
Power tap; for 50 mm² high-current tbs;  
Module width 16 mm; 6,00 mm²; gray

1.1.8 Protective warning marker

1.1.8.1 Cover



Item No.: 285-440  
Protective warning marker; with high-voltage symbol, black; yellow



Item No.: 285-449  
Protective warning marker; yellow

1.1.9 Tool

1.1.9.1 Operating tool



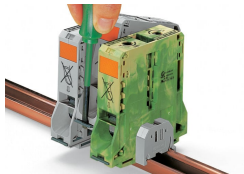
Item No.: 285-172  
Allen wrench; with a partially insulated shaft; green



Item No.: 285-173  
Allen wrench; with a partially insulated shaft; with anti-rotation protection; green

Installation Notes

Installation



Removing a terminal block from the assembly (to the left or to the right).



Grounding foot:  
Ground conductor terminal blocks (limited to max. 120 mm²/250 kcmil per EN 60947-7-2) must be snapped onto a 2.3 mm thick copper DIN-rail.



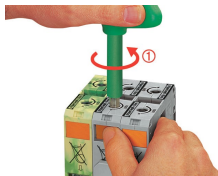
Conductor termination



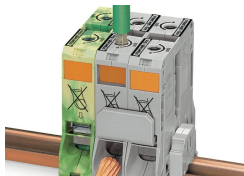
For the optimal clamping force: Bend conductor Cut conductor to length (conductor end must be straight) Strip conductor



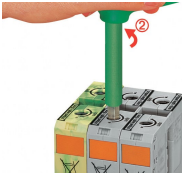
Always observe the on-unit printed strip length guide!



Conductor termination – step 1: Rotate the T-wrench counter-clockwise to the stop . Next, push in the orange locking tab. The clamp is locked open for hands-free wiring.

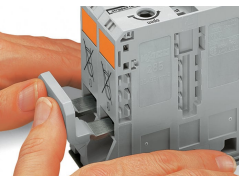


Conductor termination – step 2: Insert a stripped conductor into the clamping unit until it hits the backstop. Hold in this position.

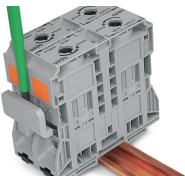


Conductor termination – step 3: A short counter-clockwise rotation releases the tab. When unlocked, the T-wrench rotates clockwise, securely clamping the conductor.

Commoning



Commoning with an adjacent jumper: insert the jumper above the conductor entry hole – prior to conductor termination. The nominal cross-section remains unchanged.

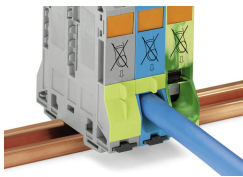


Removing jumper via operating tool.

Cover

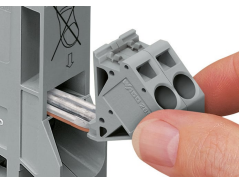


Protective warning marker may indicate: Notice: Power is still on even after switching off the main switch!

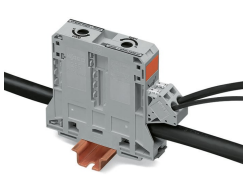


Yellow, detachable finger guards provide touch-proof safety by shielding jumper contact slots and/or unused conductor entries.

Power tap



Easily and consistently tap directly into the power supply. Insert the unwired tap before opening the clamping unit.



## Security

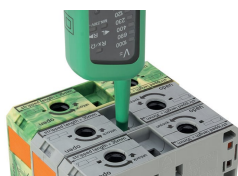


Risk of Injury!  
Do not insert fingers in the conductor entry!

## Testing

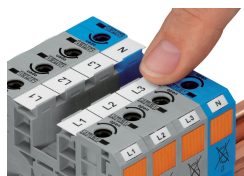


Testing via touch-proof 4 mm Ø test plugs (not available from WAGO, but offered by industry suppliers such as, Multi-Contact Deutschland GmbH).

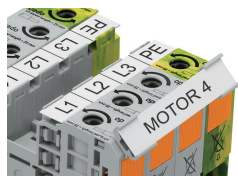


Testing Voltage measurements can be performed, e.g., using a 2-pole voltage tester (206-707).

## Marking



WMB markers or self-adhesive, printable marking strips can be accommodated on 35, 50 and 95 mm<sup>2</sup> high-current terminal blocks.



Marker carrier (285-442) for marking strips (2009-110) or 2 WMB markers for 285-13x, 285-15x and 285-19x Terminal Blocks