

NH fuse switch-disconnector size 00, 160 A, panel mounting (33200)



The picture may show a similar product.

Description

Part No.: 33200

QUADRON[®] Panel

NH fuse switch-disconnector size 00, 160 A, panel mounting
screw M8

System

Mounting plate

Advantages of the product

For safe connection of the leads, the shock protection is split into 2. Self-closing inspection holes are available in the cover.

Product group 09

Subgroup 03

pack size 1
EAN 4021267332006

catalog page 2020 : 6.13

ECLASS 6.1 27142108
ECLASS 7.1 27142108
ETIM 4.0 EC001040
ETIM 5.0 EC001040

Approvals

Standards

IEC 60947-1:2007 + A1:2010 + A2:2014
IEC 60947-3:2008 + A1:2012 + A2:2015
UL 4248-1

Approvals

IEC (CB) , UL , CCC , DNV GL , EAC



for UL feeder circuits >250V

type number: LTS-00
EAC Type: NH

UL file: E230163, UL category (for USA): IZLT2 <http://www.ul.com>
CCC certificate: 2004010302117250

Technical data

for fuse links size:	NH 000, NH 00
fuse links acc. to standard:	IEC / HD 60269-2
permitted power dissipation of the fuse-link:	12 W
requirements for contact parts:	Fuse links with silver-plated contact pieces recommended. For fuse links with nickel-plated contact pieces, a reduction factor of 0.8 is to be observed.

Details IEC

Standards

IEC 60947-1:2007 + A1:2010 + A2:2014

IEC 60947-3:2008 + A1:2012 + A2:2015

Electrical data IEC

Rated current (IEC): 160 A

rated voltage (IEC) AC: 690 V

rated voltage (IEC) DC: 440 V

rated isolation voltage U_i AC: 800 V

rated isolation voltage U_i DC: 500 V

rated surge voltage U_{imp} : 6 kV

max. permitted voltage (IEC) DC 800 V

Utilisation category AC (IEC 60947-3) : AC-23B (400V)
AC-23B (500V/125A)
AC-22B (690V)
AC-21B (690V)
AC-20B (1000V) at pollution degree 2

visible information required if used at more than 690V AC: do not switch under load

Utilisation category DC (IEC 60947-3) : DC specifications: 2 current paths (L1,L3) in series
DC-22B (220V)
DC-22B (440V/125A)
DC-21B (440V)
DC-20B (1000V) at pollution degree 2

visible information required if used at more than 440V DC: do not switch under load

cond. short-circuit current with fuses (AC): 50 kA / 690 V

approved with fuse links of operation class: gG

power dissipation of the article:

The power dissipation at a typical load of 80 % results to 4.5 W.

(The power dissipation at full load would be 7.0 W.)

A fuse-combination unit acc. to IEC 60947-3 can only be operated at a higher voltage than its rated voltage, if it is used as a fuse-disconnector without breaking capacity, up to its max. rated insulation voltage and labelled as such.

In accordance with the specified AC and DC switching properties and in consideration of the overload conditions, the distances to earthed metal parts given below are to be adhered to. - top 150mm, side 55mm

When used as a disconnector, the spacings can be ignored.

Degree of protection IP30 at front, degree of protection near terminal depends on installation

Details UL

Standards

UL 4248-1

for UL feeder circuits >250V

Electrical data UL

rated current (UL): 160 A

rated voltage (UL) AC: 600 V

rated frequency (UL): 50 / 60 Hz

SCCR: 100 kA

Mechanical data

W x H x D: 106 x 200 x 83

weight: 77.7 kg/100

poles: 3-pole

front degree of protection: IP30

Terminal points

screw connection M8

screw drive: SW13

Md min.: 8.0 Nm

Md max.: 10.0 Nm

Not suitable for aluminium cables !

Accessories:

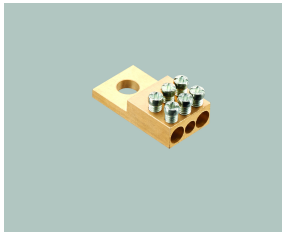
Clamp connection: Cu 1.5-70mm² s(r), f+AE; lam. Cu 12x1-10; 3Nm torque

single wedge clamp terminal: Cu, Al* 16-70mm² s(r), s(s), f+AE; 3Nm torque

tunnel terminal 3x Cu 1.5-16mm² s(r), f+AE; 3Nm torque

*Connections not maintenance-free if aluminium conductors are used.

Accessories



01182

tunnel terminal for screw connection M8

1x 2.5 - 16 mm² + 2x 2.5 - 25 mm²

NH 00



03727

clamp connector

1.5 - 70 mm²

size 00



03849

lid interlock

for sealing wire

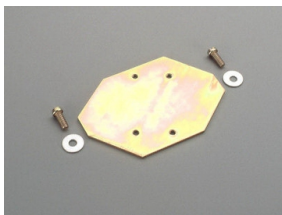
Size 00



33156

pilot switch

changeover 250 V AC / 5 A, 30 V DC / 4 A

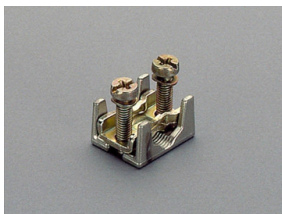


33193

rapid mounting set

for 2 mounting rails, rails centre distance 125 mm or 150 mm

size 00

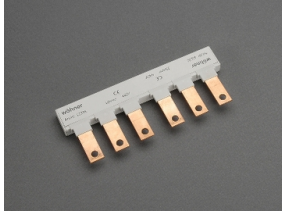


33224

prism terminal, single, for Cu and Al cables

16 - 70 mm²

NH 00

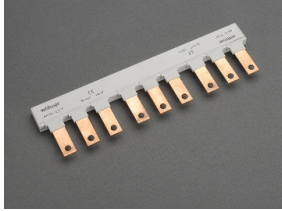


33376

comb-type busbar, 3-pole, for 2 NH fuse switch disconnectors

33200

35 mm²



33377

comb-type busbar, 3-pole, for 3 NH fuse switch disconnectors

33200

35 mm²

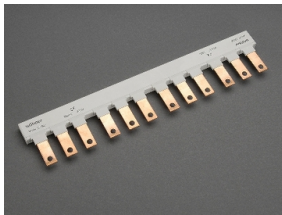


33378

connecting terminal, front connection

for 3-pole comb-type busbar 35 mm², suitable for NH-fuse-switch-disconnector size 00 with screw connection

25 - 95 mm²

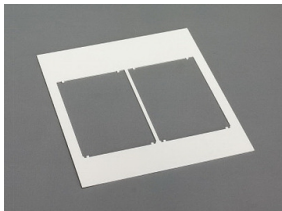


33392

comb-type busbar, 3-pole, for 4 NH fuse switch disconnectors

33200

35 mm²

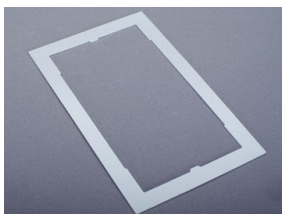


78105

trim frame, double

232 x 210, not for 33221, 33222

size 00

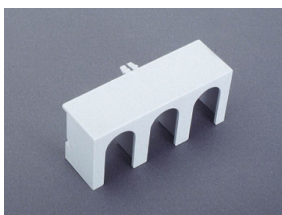


78893

trim frame, single

130 x 210, not for 33221, 33222

size 00



79811

cover for cable lugs, top / bottom attachable

NH 00

for: 33200, 33208, 33329, 33394, 33398, 33420