

busbar 25 x 5 (01621)



The picture may show a similar product.

Description

Part No.: 01621
busbar 25 x 5
length 2.40 m, tinned

System

60Classic

Advantages of the product

Tin-plated Cu busbars considerably reduce the effort of preparing the contact points.
The Cu busbars are effectively protected against aggressive media.

Product group 06

Subgroup 82

pack size 1

EAN 4021267016210

catalog page 2020 : 3.3

ECLASS 6.1 27370303

ECLASS 7.1 27370303

ETIM 4.0 EC001522

ETIM 5.0 EC001522

Approvals

Standards

IEC 61439-1:2011

Approvals

DNV GL, EAC



type number: 25x5

EAC Type: BB-F

CCC approval: no certification required

Technical data

Details IEC

Standards

IEC 61439-1:2011

Electrical data

Please respect the insulation characteristics of the busbar support for your application.

short-circuit withstandability: see product description of the used busbar support

power dissipation of the article:

The power dissipation at a typical load of 80 % results to 39.0 W.

(The power dissipation at full load would be 61.0 W.)

current at 30 K 400 A

:

Mechanical data

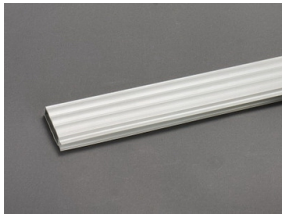
W x H x D: 2,400 x 25 x 5

weight: 267.8 kg/100

cross-section: 125 mm²

Edge radius 0.5

Accessories



01244

busbar cover
for 12 - 30 x 5 busbar, 1 m long
touch protection cover



37212

current transformer 200 A / 5 A
2.5 VA / class 1

note: when used on busbars or in 630 A adapters, article 37900 is additionally required

NEW



37213

current transformer 250 A / 5 A
2.5 VA / class 1

note: when used on busbars or in 630 A adapters, article 37900 is additionally required

NEW



37214

current transformer 400 A / 5 A
2.5 VA / class 1

note: when used on busbars or in 630 A adapters, article 37900 is additionally required

NEW



37215

current transformer 500 A / 5 A
2.5 VA / class 1

note: when used on busbars or in 630 A adapters, article 37900 is additionally required

NEW



37219

current transformer 200 A / 5 A
1.5 VA / class 0.5

note: when used on busbars or in 630 A adapters, article 37900 is additionally required

NEW



37220

current transformer 250 A / 5 A

2.5 VA / class 0.5

note: when used on busbars or in 630 A adapters, article 37900 is additionally required

NEW



37221

current transformer 400 A / 5 A

2.5 VA / class 0.5

note: when used on busbars or in 630 A adapters, article 37900 is additionally required

NEW



37222

current transformer 500 A / 5 A

2.5 VA / class 0.5

note: when used on busbars or in 630 A adapters, article 37900 is additionally required

NEW



37232

current transformer 200 A / 5 A, with decl. of conformity

1.5 VA / class 0.5

note: when used on busbars or in 630 A adapters, article 37900 is additionally required

NEW



37233

current transformer 250 A / 5 A, with decl. of conformity

2.5 VA / class 0.5

note: when used on busbars or in 630 A adapters, article 37900 is additionally required

NEW

**37234**

current transformer 400 A / 5 A, with decl. of conformity

2.5 VA / class 0.5

note: when used on busbars or in 630 A adapters, article 37900 is additionally required

NEW

**37235**

current transformer 500 A / 5 A, with decl. of conformity

2.5 VA / class 0.5

note: when used on busbars or in 630 A adapters, article 37900 is additionally required

NEW

**37236**

current transformer 250 A / 5 A, with decl. of conformity

1.5 VA / class 0.5s

note: when used on busbars or in 630 A adapters, article 37900 is additionally required

NEW

**37237**

current transformer 400 A / 5 A, with decl. of conformity

2.5 VA / class 0.5s

note: when used on busbars or in 630 A adapters, article 37900 is additionally required

NEW

**37238**

current transformer 500 A / 5 A, with decl. of conformity

2.5 VA / class 0.5s

note: when used on busbars or in 630 A adapters, article 37900 is additionally required

NEW