

busbar 30 x 10 (01625)



The picture may show a similar product.

Description

Part No.: 01625
busbar 30 x 10
length 2.40 m, tinned

System

60Classic
100Energy
185Power
185mm-System
centre feed unit

Advantages of the product

Tin-plated Cu busbars considerably reduce the effort of preparing the contact points.
The Cu busbars are effectively protected against aggressive media.

Product group 06
Subgroup 83

pack size 1
EAN 4021267016258

catalog page 2020 : 3.3, 4.1

ECLASS 6.1 27370303
ECLASS 7.1 27370303
ETIM 4.0 EC001522
ETIM 5.0 EC001522

Approvals

Standards

IEC 61439-1:2011
UL 508

Approvals

CSA , UL , DNV GL , EAC



for UL feeder circuits >250V

type number: 30x10-L
EAC Type: BB-F

UL file: E123577, UL category (for USA): NMTR <http://www.ul.com>
UL file: E123577, UL category (for Canada): NMTR7 <http://www.ul.com>
CSA file: 110285, CSA class: 3211-37 <http://directories.csa-international.org>
CCC approval: no certification required

Technical data

Details IEC

Standards

IEC 61439-1:2011

Electrical data

Please respect the insulation characteristics of the busbar support for your application.

short-circuit withstandability: see product description of the used busbar support

power dissipation of the article:

The power dissipation at a typical load of 80 % results to 40.3 W.

(The power dissipation at full load would be 63.0 W.)

current at 30 K 630 A

:

Details UL

Standards

UL 508

for UL feeder circuits >250V

considering the permitted temperature rise at the concrete installation conditions the following capacity could be accepted by UL (file E197039

max. load acc. to UL 508: 630 A

for applications in the system 60Classic up to 756 A

Notice the rated voltage of the used busbar support in the application.

Mechanical data

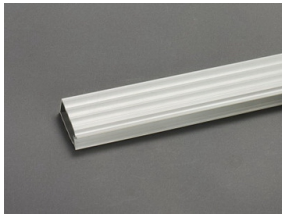
W x H x D: 2,400 x 30 x 10

weight: 643.2 kg/100

cross-section: 300 mm²

Edge radius 0.5

Accessories



01245

busbar cover
for 12 - 30 x 10 busbar, 1 m long
touch protection cover



37212

current transformer 200 A / 5 A
2.5 VA / class 1

note: when used on busbars or in 630 A adapters, article 37900 is additionally required

NEW



37213

current transformer 250 A / 5 A
2.5 VA / class 1

note: when used on busbars or in 630 A adapters, article 37900 is additionally required

NEW



37214

current transformer 400 A / 5 A
2.5 VA / class 1

note: when used on busbars or in 630 A adapters, article 37900 is additionally required

NEW



37215

current transformer 500 A / 5 A
2.5 VA / class 1

note: when used on busbars or in 630 A adapters, article 37900 is additionally required

NEW



37216

current transformer 600 A / 5 A
2.5 VA / class 1

note: when used on busbars or in 630 A adapters, article 37900 is additionally required

NEW



37219

current transformer 200 A / 5 A

1.5 VA / class 0.5

note: when used on busbars or in 630 A adapters, article 37900 is additionally required

NEW



37220

current transformer 250 A / 5 A

2.5 VA / class 0.5

note: when used on busbars or in 630 A adapters, article 37900 is additionally required

NEW



37221

current transformer 400 A / 5 A

2.5 VA / class 0.5

note: when used on busbars or in 630 A adapters, article 37900 is additionally required

NEW



37222

current transformer 500 A / 5 A

2.5 VA / class 0.5

note: when used on busbars or in 630 A adapters, article 37900 is additionally required

NEW



37223

current transformer 600 A / 5 A

2.5 VA / class 0.5

note: when used on busbars or in 630 A adapters, article 37900 is additionally required

NEW

**37224**

current transformer 800 A / 5 A

2.5 VA / class 0.5

note: when used on busbars or in 630 A adapters, article 37900 is additionally required

NEW

**37217**

current transformer 800 A / 5 A

2.5 VA / class 1

note: when used on busbars or in 630 A adapters, article 37900 is additionally required

NEW

**37232**

current transformer 200 A / 5 A, with decl. of conformity

1.5 VA / class 0.5

note: when used on busbars or in 630 A adapters, article 37900 is additionally required

NEW

**37233**

current transformer 250 A / 5 A, with decl. of conformity

2.5 VA / class 0.5

note: when used on busbars or in 630 A adapters, article 37900 is additionally required

NEW

**37234**

current transformer 400 A / 5 A, with decl. of conformity

2.5 VA / class 0.5

note: when used on busbars or in 630 A adapters, article 37900 is additionally required

NEW

**37235**

current transformer 500 A / 5 A, with decl. of conformity

2.5 VA / class 0.5

note: when used on busbars or in 630 A adapters, article 37900 is additionally required

NEW

**37236**

current transformer 250 A / 5 A, with decl. of conformity

1.5 VA / class 0.5s

note: when used on busbars or in 630 A adapters, article 37900 is additionally required

NEW

**37237**

current transformer 400 A / 5 A, with decl. of conformity

2.5 VA / class 0.5s

note: when used on busbars or in 630 A adapters, article 37900 is additionally required

NEW

**37238**

current transformer 500 A / 5 A, with decl. of conformity

2.5 VA / class 0.5s

note: when used on busbars or in 630 A adapters, article 37900 is additionally required

NEW