

## busbar 12 x 5 (01618)



The picture may show a similar product.

### Description

Part No.: 01618  
busbar 12 x 5  
length 2.40 m, tinned

### System

30Compact 3P  
30Compact 5P  
60Classic

### Advantages of the product

Tin-plated Cu busbars considerably reduce the effort of preparing the contact points.  
The Cu busbars are effectively protected against aggressive media.

**Product group** 06  
**Subgroup** 82

pack size 1  
EAN 4021267016180

catalog page 2020 : 2.1, 2.5, 3.3

ECLASS 6.1 27370303  
ECLASS 7.1 27370303  
ETIM 4.0 EC001522  
ETIM 5.0 EC001522

## Approvals

### Standards

IEC 61439-1:2011  
UL 508

### Approvals

CSA, UL, DNV GL, EAC



for UL feeder circuits >250V

type number: 12x5-L  
EAC Type: BB-F

UL file: E123577, UL category (for USA): NMTR <http://www.ul.com>  
UL file: E123577, UL category (for Canada): NMTR7 <http://www.ul.com>  
CSA file: 110285, CSA class: 3211-37 <http://directories.csa-international.org>  
CCC approval: no certification required

## Technical data

### Details IEC

#### Standards

IEC 61439-1:2011

### Electrical data

Please respect the insulation characteristics of the busbar support for your application.

short-circuit withstandability: see product description of the used busbar support

power dissipation of the article:

The power dissipation at a typical load of 80 % results to 20.5 W.

(The power dissipation at full load would be 32.0 W.)

current at 30 K 200 A

:

Die erreichbare Strombelastbarkeit hängt von den Temperaturverhältnissen (Lufttemperatur, Schienentemperatur) am Einbauort ab. [Strombelastbarkeit](#)

## Details UL

### Standards

UL 508

for UL feeder circuits >250V

considering the permitted temperature rise at the concrete installation conditions the following capacity could be accepted by UL (file E197039

max. load acc. to UL 508: 150 A

Notice the rated voltage of the used busbar support in the application.

## Mechanical data

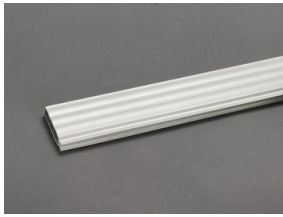
W x H x D: 2,400 x 12 x 5

weight: 128.4 kg/100

cross-section: 60 mm<sup>2</sup>

Edge radius 0.5

## Accessories



**01244**

busbar cover  
for 12 - 30 x 5 busbar, 1 m long  
touch protection cover



**01242**

busbar cover  
for 12 x 5 busbar, 1 m long  
touch protection cover

**NEW**