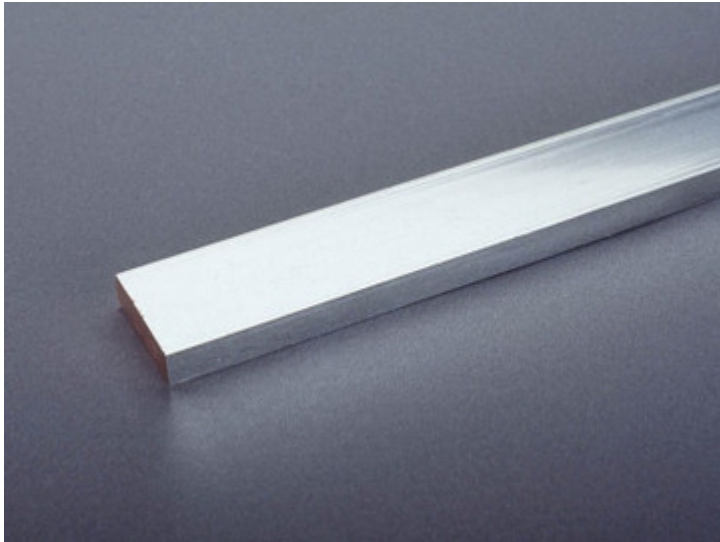


## busbar 30 x 10 (01204)



The picture may show a similar product.

### Description

Part No.: 01204  
busbar 30 x 10  
length 3.60 m, tinned

### System

60Classic

### Advantages of the product

Tin-plated Cu busbars considerably reduce the effort of preparing the contact points.  
The Cu busbars are effectively protected against aggressive media.

Product group 06

Subgroup 83

pack size 1

EAN 4021267012045

catalog page 2020 : 3.3

ECLASS 6.1 27370303

ECLASS 7.1 27370303

ETIM 4.0 EC001522

ETIM 5.0 EC001522

## Approvals

### Standards

IEC 61439-1:2011

UL 508

### Approvals

CSA , UL , DNV GL , EAC



for UL feeder circuits >250V

type number: 30x10-L

EAC Type: BB-F

UL file: E123577, UL category (for USA): NMTR <http://www.ul.com>

UL file: E123577, UL category (for Canada): NMTR7 <http://www.ul.com>

CSA file: 110285, CSA class: 3211-37 <http://directories.csa-international.org>

CCC approval: no certification required

## Technical data

### Details IEC

#### Standards

IEC 61439-1:2011

### Electrical data

**Please respect the insulation characteristics of the busbar support for your application.**

short-circuit withstandability: see product description of the used busbar support

power dissipation of the article:

The power dissipation at a typical load of 80 % results to 60.2 W.

(The power dissipation at full load would be 94.0 W.)

## Details UL

### Standards

UL 508

for UL feeder circuits >250V

considering the permitted temperature rise at the concrete installation conditions the following capacity could be accepted by UL (file E197039

max. load acc. to UL 508:

630 A

Notice the rated voltage of the used busbar support in the application.

## Mechanical data

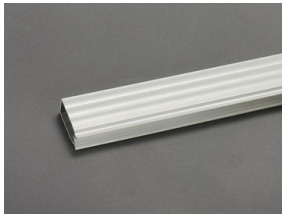
W x H x D: 3,600 x 30 x 10

weight: 970.0 kg/100

cross-section: 300 mm<sup>2</sup>

Edge radius 0.5

## Accessories



**01245**

busbar cover  
for 12 - 30 x 10 busbar, 1 m long  
touch protection cover



**37212**

current transformer 200 A / 5 A  
2.5 VA / class 1

note: when used on busbars or in 630 A adapters, article 37900 is additionally required

**NEW**



**37213**

current transformer 250 A / 5 A  
2.5 VA / class 1

note: when used on busbars or in 630 A adapters, article 37900 is additionally required

**NEW**



**37214**

current transformer 400 A / 5 A  
2.5 VA / class 1

note: when used on busbars or in 630 A adapters, article 37900 is additionally required

**NEW**



**37215**

current transformer 500 A / 5 A  
2.5 VA / class 1

note: when used on busbars or in 630 A adapters, article 37900 is additionally required

**NEW**



**37216**

current transformer 600 A / 5 A  
2.5 VA / class 1

note: when used on busbars or in 630 A adapters, article 37900 is additionally required

**NEW**



**37219**

current transformer 200 A / 5 A

1.5 VA / class 0.5

note: when used on busbars or in 630 A adapters, article 37900 is additionally required

**NEW**



**37220**

current transformer 250 A / 5 A

2.5 VA / class 0.5

note: when used on busbars or in 630 A adapters, article 37900 is additionally required

**NEW**



**37221**

current transformer 400 A / 5 A

2.5 VA / class 0.5

note: when used on busbars or in 630 A adapters, article 37900 is additionally required

**NEW**



**37222**

current transformer 500 A / 5 A

2.5 VA / class 0.5

note: when used on busbars or in 630 A adapters, article 37900 is additionally required

**NEW**



**37223**

current transformer 600 A / 5 A

2.5 VA / class 0.5

note: when used on busbars or in 630 A adapters, article 37900 is additionally required

**NEW**

**37224**

current transformer 800 A / 5 A

2.5 VA / class 0.5

note: when used on busbars or in 630 A adapters, article 37900 is additionally required

**NEW**

**37217**

current transformer 800 A / 5 A

2.5 VA / class 1

note: when used on busbars or in 630 A adapters, article 37900 is additionally required

**NEW**

**37232**

current transformer 200 A / 5 A, with decl. of conformity

1.5 VA / class 0.5

note: when used on busbars or in 630 A adapters, article 37900 is additionally required

**NEW**

**37233**

current transformer 250 A / 5 A, with decl. of conformity

2.5 VA / class 0.5

note: when used on busbars or in 630 A adapters, article 37900 is additionally required

**NEW**

**37234**

current transformer 400 A / 5 A, with decl. of conformity

2.5 VA / class 0.5

note: when used on busbars or in 630 A adapters, article 37900 is additionally required

**NEW**

**37235**

current transformer 500 A / 5 A, with decl. of conformity

2.5 VA / class 0.5

note: when used on busbars or in 630 A adapters, article 37900 is additionally required

**NEW**

**37236**

current transformer 250 A / 5 A, with decl. of conformity

1.5 VA / class 0.5s

note: when used on busbars or in 630 A adapters, article 37900 is additionally required

**NEW**

**37237**

current transformer 400 A / 5 A, with decl. of conformity

2.5 VA / class 0.5s

note: when used on busbars or in 630 A adapters, article 37900 is additionally required

**NEW**

**37238**

current transformer 500 A / 5 A, with decl. of conformity

2.5 VA / class 0.5s

note: when used on busbars or in 630 A adapters, article 37900 is additionally required

**NEW**