

NH fuse switch-disconnector size 1, 250 A (33600)



The picture may show a similar product.

Description

Part No.: 33600

QUADRON® 60Classic

NH fuse switch-disconnector size 1, 250 A

box terminal

connection top or bottom

for busbars 12, 15, 20, 25, 30 x 5, 10 and section busbars

with CrossLink®Technology

System

60Classic

Advantages of the product

CrossLink® adapter technology

Fast and safe conversion of the connection for top or bottom; the parts under voltage remain shock protected

Simple and safe clicking into place and making contact

Safe connection through shock protection split into two

Busbar supports for flat busbars can be mounted above each other

Self-closing test holes are available in the cover.

Product group 09

Subgroup 27

pack size 1

EAN 4021267336004

catalog page 2020 : 3.23

ECLASS 6.1 27142108

ECLASS 7.1 27142108

ETIM 4.0 EC001040

ETIM 5.0 EC001040

Approvals

Standards

IEC 60947-1:2007 + A1:2010 + A2:2014

IEC 60947-3:2008 + A1:2012 + A2:2015

UL 4248-1

Approvals

IEC (CB) , UL , VDE , CCC , DNV GL , EAC



for UL feeder circuits >250V

type number: QCB-NH1

EAC Type: NH

UL file: E230163, UL category (for USA): IZLT2 <http://www.ul.com>

CCC certificate: 2012010302563561

Technical data

for fuse links size:	NH 1
fuse links acc. to standard:	IEC / HD 60269-2
permitted power dissipation of the fuse-link:	23 W
requirements for contact parts:	Fuse links with silver-plated contact pieces recommended. For fuse links with nickel-plated contact pieces, a reduction factor of 0.8 is to be observed.

Details IEC

Standards

IEC 60947-1:2007 + A1:2010 + A2:2014

IEC 60947-3:2008 + A1:2012 + A2:2015

Electrical data IEC

Rated current (IEC): 250 A

rated voltage (IEC) AC: 690 V

rated voltage (IEC) DC: 440 V

rated isolation voltage U_i AC: 800 V

rated isolation voltage U_i DC: 500 V

rated surge voltage U_{imp} : 6 kV

max. permitted voltage (IEC) AC 725 V

max. permitted voltage (IEC) DC 800 V

Utilisation category AC (IEC 60947-3) : AC-22B (400 V)
AC-23B (400 V / 160 A)
AC-21B (690 V)
AC-20B (1000 V) at pollution degree 2

to obtain a higher utilisation category the product can be retrofitted with arcing chambers (see accessories)

visible information required if used at more than 690V AC: do not switch under load

Utilisation category DC (IEC 60947-3) : DC specifications: 2 current paths (L1,L3) in series
DC-20B (440 V)
DC-20B (1000V) at pollution degree 2

visible information required if used at more than 440V DC: do not switch under load

cond. short-circuit current with fuses (AC): 100 kA / 690 V
approved with fuse links of operation class: gG
rated peak withstand current I_{pk} max.: 13.7 kA
rated short-time withstand current I_{CW} (1.0 s) max.: 8.1 kA

power dissipation of the article:

The power dissipation at a typical load of 80 % results to 16.6 W.
(The power dissipation at full load would be 26.0 W.)

A fuse-combination unit acc. to IEC 60947-3 can only be operated at a higher voltage than its rated voltage, if it is used as a fuse-disconnector without breaking capacity, up to its max. rated insulation voltage and labelled as such.

In accordance with the specified AC and DC switching properties and in consideration of the overload conditions, the distances to earthed metal parts given below are to be adhered to. - top 190mm, side 75mm

When used as a disconnector, the spacings can be ignored.

Degree of protection IP30 at front, degree of protection near terminal depends on installation

Details UL

Standards

UL 4248-1

for UL feeder circuits >250V

Electrical data UL

rated current (UL): 250 A
rated voltage (UL) AC: 600 V
rated frequency (UL): 50 / 60 Hz

SCCR: 100 kA

Mechanical data

W x H x D: 184 x 243 x 129
weight: 266.0 kg/100
poles: 3-pole
for busbars: 12, 15, 20, 25, 30 x 5, 10 and section busbars

front degree of protection: IP30

Terminal points

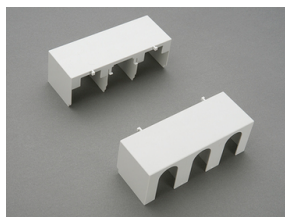
cage clamp connection
screw drive: S4
wire stripping: 22 mm
min. cross-section: 35 mm²
max. cross-section: 185 mm²
Md min.: 9.6 Nm
Md max.: 14.4 Nm
Not suitable for aluminium cables !

box terminal

Cu 70-185mm²f
Cu 35-150mm²s(r)
Cu 35-120mm²f+AE
lam.Cu 15.5-24mm large
terminal space 24.5 x 12mm
min. terminal space height 3mm

(flexible cables of maximum cross-section may not fit when using wire-end ferrule)

Accessories



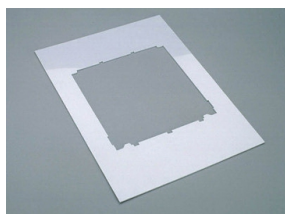
33142

cover for cable lugs, top / bottom attachable
for: QCB-NH1, QCS-NH1, QCS-320



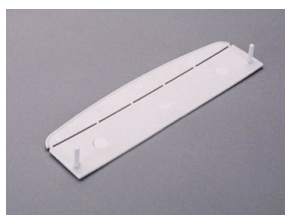
33145

prism terminal, double, for Cu cables
2x 35 - 70 mm²
QCB-NH1, QCS-NH1, QCS-320



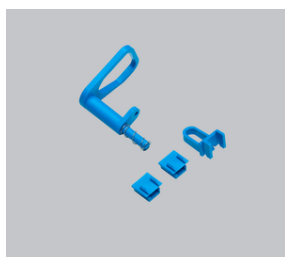
33152

trim frame, single
215 x 330
size 1



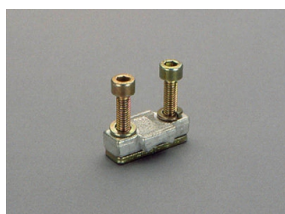
33155

barrier for handle
for NH fuse-switch disconnecter size 1-3
for closing of handle area from rear



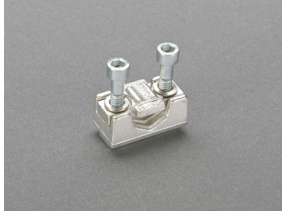
33157

lid interlock
for sealing wire or 3 padlocks with shackle of 4 - 7 mm
Size 1 - 3



33163

clamp connector for Cu cables
70 - 150 mm²
QCB-NH1, QCS-NH1, LTS-F 250, LTS 400

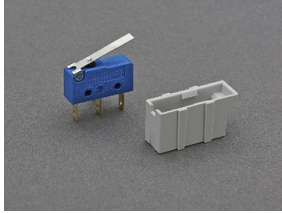


33166

prism terminal, single, for Cu and Al cables

35 - 150 mm²

QCB-NH1, QCS-NH1, QCS-320

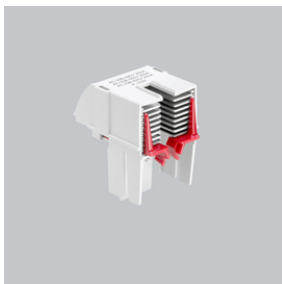


33917

pilot switch

changeover 250 V AC / 5 A, 30 V DC / 4 A

QUADRON®60Classic, QUADRON®Panel size 1

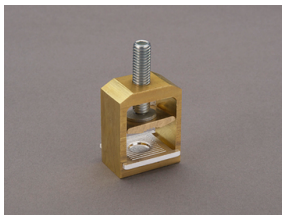


33918

arcing chamber

retrofit package for higher utilisation category

for QCB-NH1

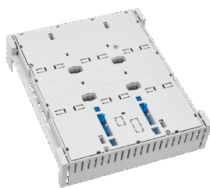


33909

box terminal for Cu cables

35 - 150 mm²

QCB-NH1, QCS-NH1, QCS-320



32595

CrossLink® 60Classic

spare part busbar adapter 250 A

busbar adapter base