

NH fuse switch-disconnector size 00, 160 A (33398)



The picture may show a similar product.

Description

Part No.: 33398

QUADRON® 60Classic

NH fuse switch-disconnector size 00, 160 A

screw M8

connection top or bottom

for busbars 12, 15, 20, 25, 30 x 5, 10 and section busbars

with CrossLink®Technology

System

60Classic

Advantages of the product

CrossLink® adapter technology

Fast and safe conversion of the connection for top or bottom; the parts under voltage remain shock protected

Simple and safe clicking into place and making contact

Safe connection through shock protection split into 2

Busbar supports for flat busbars can be mounted above each other

Product group 09
Subgroup 24

pack size 1
EAN 4021267333980

catalog page 2020 : 3.23

ECLASS 6.1 27142108
ECLASS 7.1 27142108
ETIM 4.0 EC001040
ETIM 5.0 EC001040

Approvals

Standards

IEC 60947-1:2007 + A1:2010 + A2:2014
IEC 60947-3:2008 + A1:2012 + A2:2015
UL 4248-1

Approvals

IEC (CB) , UL , VDE , CCC , DNV GL , EAC



for UL feeder circuits >250V

type number: QCB-NH00
EAC Type: NH

UL file: E230163, UL category (for USA): IZLT2 <http://www.ul.com>
CCC certificate: 2010010302403934

Technical data

for fuse links size:	NH 000, NH 00
fuse links acc. to standard:	IEC / HD 60269-2
permitted power dissipation of the fuse-link:	12 W
requirements for contact parts:	Fuse links with silver-plated contact pieces recommended. For fuse links with nickel-plated contact pieces, a reduction factor of 0.8 is to be observed.

Details IEC

Standards

IEC 60947-1:2007 + A1:2010 + A2:2014

IEC 60947-3:2008 + A1:2012 + A2:2015

Electrical data IEC

Rated current (IEC): 160 A

rated voltage (IEC) AC: 690 V

rated voltage (IEC) DC: 440 V

rated isolation voltage U_i AC: 800 V

rated isolation voltage U_i DC: 500 V

rated surge voltage U_{imp} : 6 kV

max. permitted voltage (IEC) DC 800 V

Utilisation category AC (IEC 60947-3) : AC-21B (690V)
AC-22B (500V)
AC-20B (1000V) at pollution degree 2

visible information required if used at more than 690V AC: do not switch under load

Utilisation category DC (IEC 60947-3) : DC specifications: 2 current paths (L1,L3) in series
DC-21B (220V)
DC-21B (440V/100A)
DC-22B (220V/63A)
DC-20B (1000V) at pollution degree 2

visible information required if used at more than 440V DC: do not switch under load

cond. short-circuit current with fuses (AC): 50 kA / 690 V
approved with fuse links of operation class: gG

power dissipation of the article:

The power dissipation at a typical load of 80 % results to 11.3 W.
(The power dissipation at full load would be 17.7 W.)

A fuse-combination unit acc. to IEC 60947-3 can only be operated at a higher voltage than its rated voltage, if it is used as a fuse-disconnector without breaking capacity, up to its max. rated insulation voltage and labelled as such.

In accordance with the specified AC and DC switching properties and in consideration of the overload conditions, certain distances to earthed metal parts are to be adhered to. detailed information upon inquiry

When several devices are used side-by-side in continuous operation, the rated load factor specified in IEC / EN 61439-1, Table 1, must be observed.

System component: degree of protection IP30 at front as per DIN EN 60529, degree of protection near terminal depends on installation

adapter module: front side degree of protection IP20 as per DIN EN 60529 (finger-safe)

Details UL

Standards

UL 4248-1

for UL feeder circuits >250V

Electrical data UL

rated current (UL): 160 A
rated voltage (UL) AC: 600 V
rated frequency (UL): 50 / 60 Hz

SCCR: 100 kA

Mechanical data

W x H x D: 106 x 200 x 97
weight: 103.0 kg/100
poles: 3-pole
for busbars: 12, 15, 20, 25, 30 x 5, 10 and section busbars

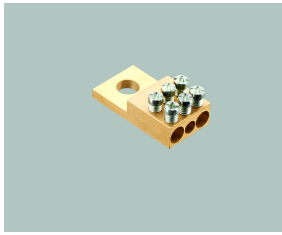
front degree of protection: IP30

Busbar connector: externally tensioned contacting, convenient click mechanism, simple conversion of the combination bases from 5 to 10mm-thick busbars

Terminal points

screw connection M8
screw drive: SW13
Md min.: 8.0 Nm
Md max.: 10.0 Nm
Not suitable for aluminium cables !

Accessories



01182

tunnel terminal for screw connection M8

1x 2.5 - 16 mm² + 2x 2.5 - 25 mm²

NH 00



03849

lid interlock

for sealing wire

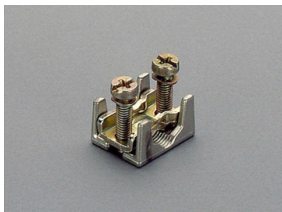
Size 00



33156

pilot switch

changeover 250 V AC / 5 A, 30 V DC / 4 A

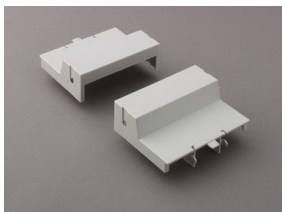


33224

prism terminal, single, for Cu and Al cables

16 - 70 mm²

NH 00



33315

trim cover, 2 parts

for NH-LTS size 00

size 00

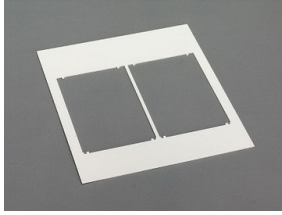


33317

trim strip, attachable at side

for NH-LTS size 00

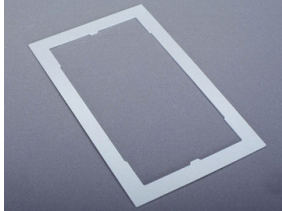
size 00

**78105**

trim frame, double

232 x 210, not for 33221, 33222

size 00

**78893**

trim frame, single

130 x 210, not for 33221, 33222

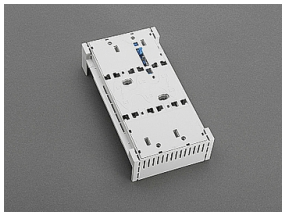
size 00

**79811**

cover for cable lugs, top / bottom attachable

NH 00

for: 33200, 33208, 33329, 33394, 33398, 33420

**32594**

CrossLink[®] 60Classic

spare part busbar adapter 160 A

busbar adapter base