

## NH fuse switch-disconnector size 000, 125 A (33216)



The picture may show a similar product.

### Description

Part No.: 33216

QUADRON® 60Classic

NH fuse switch-disconnector size 000, 125 A

box terminal

connection top or bottom

for busbars 12, 15, 20, 25, 30 x 5, 10 and section busbars

### System

60Classic

### Advantages of the product

Self-closing inspection holes are available in the cover.

Product group 09

Subgroup 22

pack size 1  
EAN 4021267332167

catalog page 2020 : 3.23

ECLASS 6.1 27142108  
ECLASS 7.1 27142108  
ETIM 4.0 EC001040  
ETIM 5.0 EC001040

## Approvals

### Standards

IEC 60947-1:2007 + A1:2010 + A2:2014  
IEC 60947-3:2008 + A1:2012 + A2:2015  
UL 4248-1

### Approvals

IEC (CB) , UL , CCC , DNV GL , EAC



for UL feeder circuits >250V

type number: LTS-000  
EAC Type: NH

UL file: E230163, UL category (for USA): IZLT2 <http://www.ul.com>  
CCC certificate: 2004010302117260

## Technical data

for fuse links size:	NH 000
fuse links acc. to standard:	IEC / HD 60269-2
permitted power dissipation of the fuse-link:	9 W
requirements for contact parts:	Fuse links with silver-plated contact pieces recommended. For fuse links with nickel-plated contact pieces, a reduction factor of 0.8 is to be observed.

## Details IEC

### Standards

IEC 60947-1:2007 + A1:2010 + A2:2014

IEC 60947-3:2008 + A1:2012 + A2:2015

### Electrical data IEC

Rated current (IEC): 125 A

rated voltage (IEC) AC: 690 V

rated voltage (IEC) DC: 440 V

rated isolation voltage  $U_i$  AC: 800 V

rated isolation voltage  $U_i$  DC: 500 V

rated surge voltage  $U_{imp}$ : 6 kV

max. permitted voltage (IEC) DC 800 V

Utilisation category AC (IEC 60947-3): AC-21B (690 V / 80 A)

AC-22B (400 V / 125 A)

Utilisation category DC (IEC 60947-3): DC specifications: 2 current paths (L1,L3) in series

DC-22B (440V/63A)

DC-22B (220V/100A)

DC-21B (440V/80A)

DC-21B (220V/125A)

cond. short-circuit current with fuses (AC): 50 kA / 400 V (125A)

50 kA / 500 V (100A)

50 kA / 690 V (50A)

approved with fuse links of operation class: gG

power dissipation of the article:

The power dissipation at a typical load of 80 % results to 6.7 W.

(The power dissipation at full load would be 10.5 W.)

A fuse-combination unit acc. to IEC 60947-3 can only be operated at a higher voltage than its rated voltage, if it is used as a fuse-disconnector without breaking capacity, up to its max. rated insulation voltage and labelled as such.

In accordance with the specified AC and DC switching properties and in consideration of the overload conditions, certain distances to earthed metal parts are to be adhered to. detailed information upon inquiry

When several devices are used side-by-side in continuous operation, the rated load factor specified in IEC / EN 61439-1, Table 1, must be observed.

Degree of protection IP30 at front, degree of protection near terminal depends on installation

## **Details UL**

### **Standards**

UL 4248-1

for UL feeder circuits >250V

### **Electrical data UL**

rated current (UL): 125 A

rated voltage (UL) AC: 600 V

rated frequency (UL): 50 / 60 Hz

SCCR: 100 kA

### **Mechanical data**

W x H x D: 89 x 200 x 90

weight: 113.0 kg/100

poles: 3-pole

for busbars: 12, 15, 20, 25, 30 x 5, 10 and section busbars

front degree of protection: IP30

Type of fastening: patented click mechanism

## Terminal points

cage clamp connection

Not suitable for aluminium cables !

Box terminal:

2.5 -50mm<sup>2</sup> flexible cables,

1.5 -50mm<sup>2</sup> flexible cables with wire-end ferrules

1.5 - 10mm<sup>2</sup> solid round

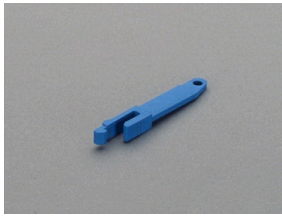
16 - 50mm<sup>2</sup> stranded round

(flexible cables of maximum cross-section may not fit when using wire-end ferrule)

lam. Cu. 6-9 mm wide

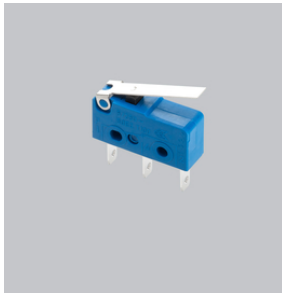
Terminal space 10mm x 10mm

## Accessories



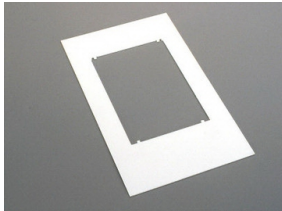
**33051**

lid interlock  
for sealing wire  
Size 000



**33156**

pilot switch  
changeover 250 V AC / 5 A, 30 V DC / 4 A



**33219**

trim frame, single  
130 x 210  
size 000