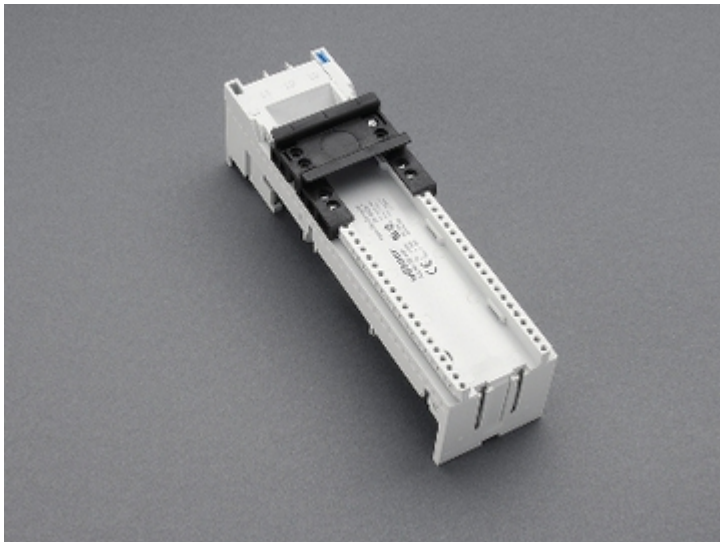


busbar adapter 80 A (32466)



The picture may show a similar product.

Description

Part No.: 32466

EQUES[®] 60Classic

busbar adapter 80 A

1 adjustable mounting rail

54 x 200, without leads, with terminals 16 mm², operated from behind
for busbars 12, 15, 20, 25, 30 x 5, 10 and section busbars

System

60Classic

Product group 05

Subgroup 27

pack size 4

EAN 4021267324667

catalog page 2020 : 3.11

ECLASS 6.1 27370304
ECLASS 7.1 27370304
ETIM 4.0 EC001531
ETIM 5.0 EC001531

Approvals

Standards

IEC 61439-1:2011
UL 508

Approvals

CSA, UL, DNV GL, EAC



for UL feeder circuits >250V

type number: EEC6080-L
EAC Type: EQ

UL file: E123577, UL category (for USA): NMTR <http://www.ul.com>
UL file: E123577, UL category (for Canada): NMTR7 <http://www.ul.com>
CSA file: 110285, CSA class: 3211-37 <http://directories.csa-international.org>
CCC approval: no certification required

Technical data

Details IEC

Standards

IEC 61439-1:2011

Electrical data IEC

Rated current (IEC): 80 A
rated voltage (IEC) AC: 690 V

rated isolation voltage U_i AC: 800 V
rated surge voltage U_{imp} : 6 kV

max. permitted voltage (IEC) DC 800 V

short-circuit withstandability: the short-circuit capacity of the combination of adapter and motor starter depends on the motor starter

power dissipation of the article:

The power dissipation at a typical load of 80 % results to 6.0 W.

(The power dissipation at full load would be 9.3 W.)

Details UL

Standards

UL 508

for UL feeder circuits >250V

Electrical data UL

rated current (UL): 80 A

rated voltage (UL) AC: 600 V

rated frequency (UL): 50 / 60 Hz

SCCR unprotected max.: 10 kA

3 cycles (without OPD) @ 600 V AC

SCCR protected max.: 100 kA

with fuse Class CF, J or T 150 A / 600 V AC

Mechanical data

W x H x D: 54 x 200 x 63

weight: 37.3 kg/100

poles: 3-pole

for busbars: 12, 15, 20, 25, 30 x 5, 10 and section busbars

Terminal points

cage clamp connection

screw drive: PZ2

wire stripping: 11 mm

min. cross-section: 1.5 mm²

max. cross-section: 16 mm²

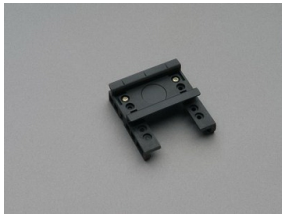
Md min.: 2.4 Nm

Md max.: 3.6 Nm

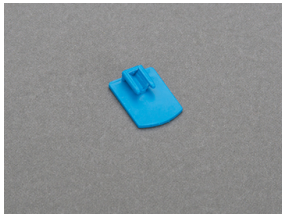
Reference

for feeder circuits as per UL508a, accessory 32974 is required

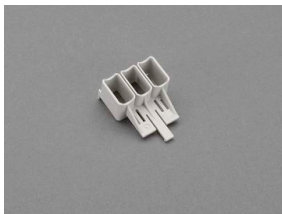
Accessories



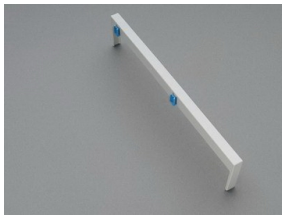
32948
mounting rail 54 mm
for busbar adapters



32969
mounting rail end stop



32974
terminal cap for UL
for busbar adapters 32466, 32467, 32469 and 32472



32963
side-mounted module for busbar adapters
attachable to both sides
9 x 200
for: EEC60..



32914
lead AWG 4 (25 mm²), 210 mm long



32915
double-lead 2x AWG 10 (2x 6 mm²), 130 / 280 mm long



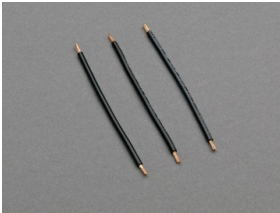
32953
positioning piece for Siemens S2
NEW



32900
lead AWG 6 (16 mm²), 210 mm long
NEW



32916
lead AWG 10 (6 mm²), 280 mm long
NEW



32921
lead AWG 14 (2.5 mm²), 105 mm long



32929
lead AWG 12 (4 mm²), 190 mm long
NEW



32935
lead AWG 10 (6 mm²), 190 mm long
NEW



32936
lead AWG 8 (10 mm²), 190 mm long
NEW



32918

lead AWG 14 (2.5 mm²), 190 mm long

NEW